

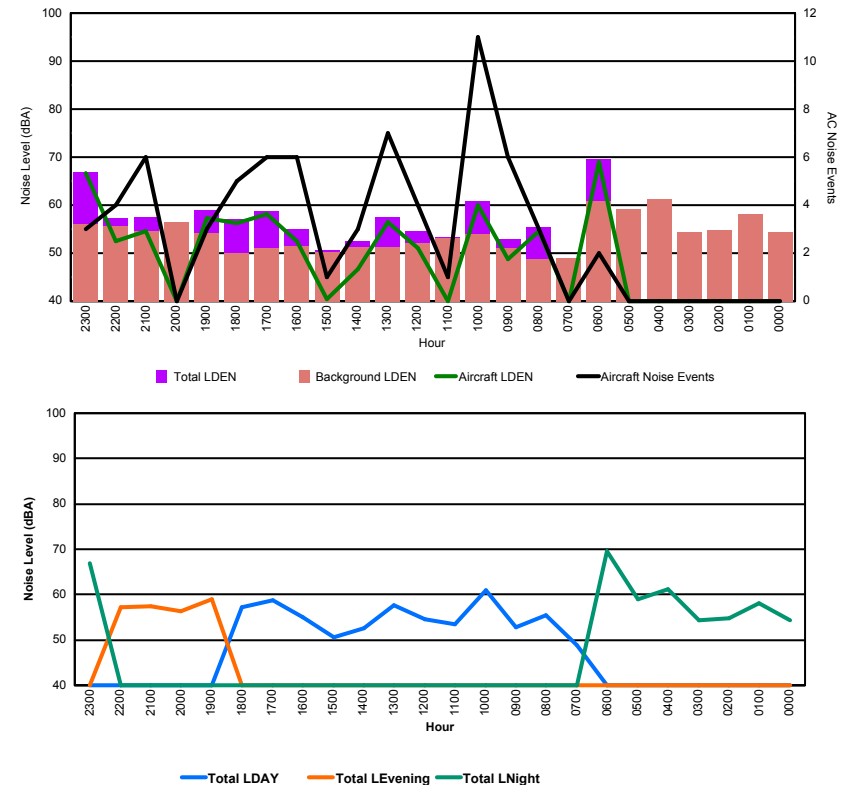


Luxembourg Airport Noise Distribution by Hour

Between 03/02/2016 00:00:00 and 03/02/2016 23:59:59 (Local Time)

Day	Aircraft Events	Total LDEN dB (A)	Aircraft LDEN dB(A)	Background LDEN dB(A)	Total LDay dB(A)	Total LEvening dB(A)	Total LNight dB (A)
03/02/16 0:00	-	54.3	-	54.3	-	-	54.3
03/02/16 1:00	-	58.0	-	58.1	-	-	58.0
03/02/16 2:00	-	54.7	-	54.7	-	-	54.7
03/02/16 3:00	-	54.4	-	54.4	-	-	54.4
03/02/16 4:00	-	61.1	-	61.2	-	-	61.1
03/02/16 5:00	-	59.0	-	59.1	-	-	59.0
03/02/16 6:00	2	69.6	69.0	60.8	-	-	69.6
03/02/16 7:00	-	48.9	-	48.9	48.9	-	-
03/02/16 8:00	3	55.5	54.5	48.7	55.5	-	-
03/02/16 9:00	6	52.9	48.8	51.0	52.9	-	-
03/02/16 10:00	11	60.9	60.0	53.9	60.9	-	-
03/02/16 11:00	1	53.4	40.1	53.2	53.4	-	-
03/02/16 12:00	4	54.5	51.0	52.1	54.5	-	-
03/02/16 13:00	7	57.6	56.5	51.3	57.6	-	-
03/02/16 14:00	3	52.5	46.6	51.3	52.5	-	-
03/02/16 15:00	1	50.6	40.4	50.2	50.6	-	-
03/02/16 16:00	6	55.0	52.6	51.4	55.0	-	-
03/02/16 17:00	6	58.8	58.1	51.1	58.8	-	-
03/02/16 18:00	5	57.1	56.2	50.1	57.1	-	-
03/02/16 19:00	3	58.9	57.2	54.2	-	58.9	-
03/02/16 20:00	-	56.4	-	56.4	-	56.4	-
03/02/16 21:00	6	57.5	54.6	54.6	-	57.5	-
03/02/16 22:00	4	57.2	52.4	55.6	-	57.2	-
03/02/16 23:00	3	66.9	66.6	56.0	-	-	66.9
	71	60.1	60.2	55.3	56.0	57.6	63.4

Location: Roodt/Syr NMT # 1



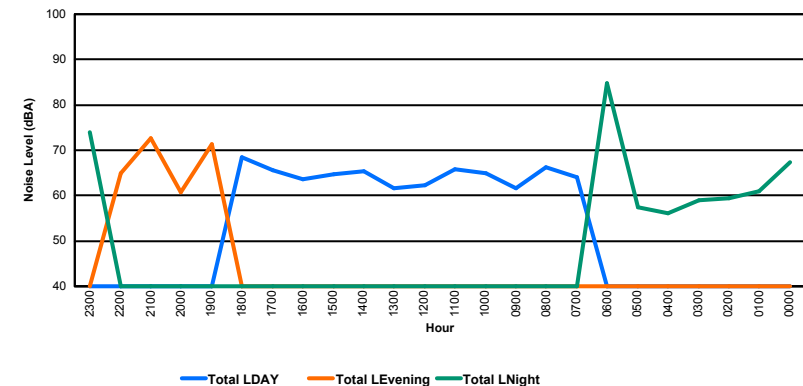
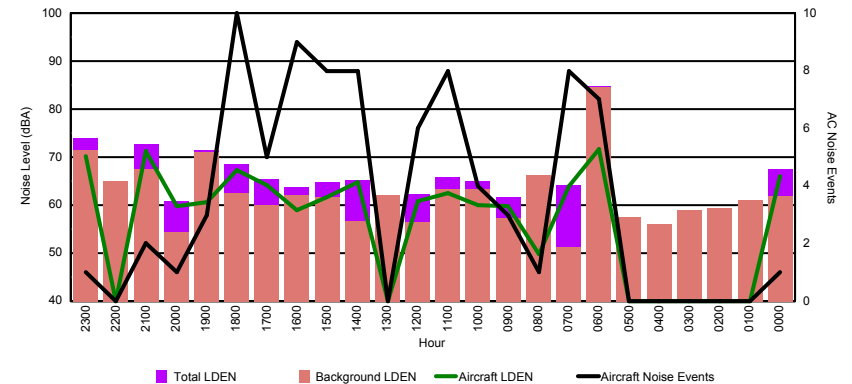


Luxembourg Airport Noise Distribution by Hour

Between 03/02/2016 00:00:00 and 03/02/2016 23:59:59 (Local Time)

Day	Aircraft Events	Total LDEN dB (A)	Aircraft LDEN dB(A)	Background LDEN dB(A)	Total LDay dB(A)	Total LEvening dB(A)	Total LNight dB (A)
03/02/16 0:00	1	67.4	66.0	61.9	-	-	67.4
03/02/16 1:00	-	60.9	-	61.0	-	-	60.9
03/02/16 2:00	-	59.4	-	59.4	-	-	59.4
03/02/16 3:00	-	58.9	-	58.9	-	-	58.9
03/02/16 4:00	-	56.1	-	56.1	-	-	56.1
03/02/16 5:00	-	57.5	-	57.6	-	-	57.5
03/02/16 6:00	7	84.8	71.6	84.6	-	-	84.8
03/02/16 7:00	8	64.1	63.9	51.3	64.1	-	-
03/02/16 8:00	1	66.3	49.7	66.2	66.3	-	-
03/02/16 9:00	3	61.7	59.8	57.2	61.7	-	-
03/02/16 10:00	4	64.9	59.9	63.4	64.9	-	-
03/02/16 11:00	8	65.9	62.5	63.3	65.9	-	-
03/02/16 12:00	6	62.3	60.8	56.4	62.3	-	-
03/02/16 13:00	-	61.7	-	62.0	61.7	-	-
03/02/16 14:00	8	65.3	64.7	56.7	65.3	-	-
03/02/16 15:00	8	64.7	61.7	61.7	64.7	-	-
03/02/16 16:00	9	63.7	59.0	62.0	63.7	-	-
03/02/16 17:00	5	65.5	64.1	59.9	65.5	-	-
03/02/16 18:00	10	68.5	67.3	62.6	68.5	-	-
03/02/16 19:00	3	71.4	60.6	71.0	-	71.4	-
03/02/16 20:00	1	60.8	59.7	54.3	-	60.8	-
03/02/16 21:00	2	72.7	71.2	67.6	-	72.7	-
03/02/16 22:00	-	64.9	-	64.9	-	64.9	-
03/02/16 23:00	1	73.9	70.2	71.5	-	-	73.9
	85	72.3	65.8	71.6	65.0	69.6	76.2

Location: Mid Runway NMT # 3



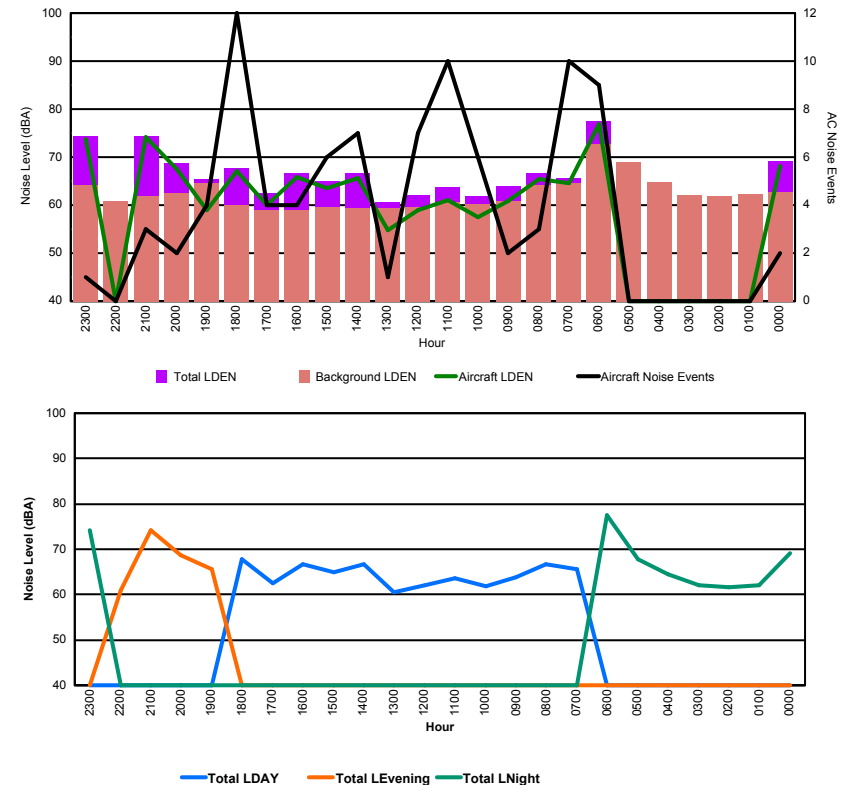


Luxembourg Airport Noise Distribution by Hour

Between 03/02/2016 00:00:00 and 03/02/2016 23:59:59 (Local Time)

Day	Aircraft Events	Total LDEN dB (A)	Aircraft LDEN dB(A)	Background LDEN dB(A)	Total LDay dB(A)	Total LEvening dB(A)	Total LNight dB (A)
03/02/16 0:00	2	69.1	68.1	62.8	-	-	69.1
03/02/16 1:00	-	62.0	-	62.3	-	-	62.0
03/02/16 2:00	-	61.7	-	61.9	-	-	61.7
03/02/16 3:00	-	62.1	-	62.1	-	-	62.1
03/02/16 4:00	-	64.6	-	64.7	-	-	64.6
03/02/16 5:00	-	67.9	-	69.0	-	-	67.9
03/02/16 6:00	9	77.5	76.8	72.7	-	-	77.5
03/02/16 7:00	10	65.7	64.5	64.6	65.7	-	-
03/02/16 8:00	3	66.7	65.4	64.2	66.7	-	-
03/02/16 9:00	2	63.9	60.9	60.9	63.9	-	-
03/02/16 10:00	6	61.9	57.5	60.2	61.9	-	-
03/02/16 11:00	10	63.7	61.0	60.7	63.7	-	-
03/02/16 12:00	7	62.1	59.0	59.5	62.1	-	-
03/02/16 13:00	1	60.6	54.8	59.3	60.6	-	-
03/02/16 14:00	7	66.6	65.7	59.4	66.6	-	-
03/02/16 15:00	6	64.9	63.5	59.6	64.9	-	-
03/02/16 16:00	4	66.6	65.8	59.0	66.6	-	-
03/02/16 17:00	4	62.6	60.1	59.0	62.6	-	-
03/02/16 18:00	12	67.8	67.1	60.1	67.8	-	-
03/02/16 19:00	4	65.5	59.0	64.6	-	65.5	-
03/02/16 20:00	2	68.7	67.4	62.6	-	68.7	-
03/02/16 21:00	3	74.3	74.1	61.8	-	74.3	-
03/02/16 22:00	-	60.9	-	60.9	-	60.9	-
03/02/16 23:00	1	74.3	73.8	64.1	-	-	74.3
	93	68.8	68.8	64.1	65.0	69.9	71.2

Location: NDB-Hamm NMT # 4





Luxembourg Airport Noise Distribution by Hour

Between 03/02/2016 00:00:00 and 03/02/2016 23:59:59 (Local Time)

Day	Aircraft Events	Total LDEN dB (A)	Aircraft LDEN dB(A)	Background LDEN dB(A)	Total LDay dB(A)	Total LEvening dB(A)	Total LNight dB (A)
03/02/16 0:00	2	65.4	60.6	64.6	-	-	65.4
03/02/16 1:00	-	61.8	-	62.0	-	-	61.8
03/02/16 2:00	-	61.1	-	61.2	-	-	61.1
03/02/16 3:00	-	60.6	-	60.6	-	-	60.6
03/02/16 4:00	-	65.5	-	66.1	-	-	65.5
03/02/16 5:00	-	69.4	-	71.1	-	-	69.4
03/02/16 6:00	5	73.2	69.5	73.0	-	-	73.2
03/02/16 7:00	5	65.0	58.4	68.1	65.0	-	-
03/02/16 8:00	1	64.0	56.9	66.0	64.0	-	-
03/02/16 9:00	3	63.4	53.8	63.6	63.4	-	-
03/02/16 10:00	5	63.7	53.9	64.0	63.7	-	-
03/02/16 11:00	12	63.9	57.4	63.7	63.9	-	-
03/02/16 12:00	7	63.1	54.4	63.0	63.1	-	-
03/02/16 13:00	1	63.4	51.9	63.5	63.4	-	-
03/02/16 14:00	3	63.8	53.5	63.7	63.8	-	-
03/02/16 15:00	5	64.0	57.0	63.8	64.0	-	-
03/02/16 16:00	2	62.9	57.4	61.5	62.9	-	-
03/02/16 17:00	3	65.8	55.4	65.9	65.8	-	-
03/02/16 18:00	12	63.7	59.1	62.4	63.7	-	-
03/02/16 19:00	2	67.6	51.8	67.8	-	67.6	-
03/02/16 20:00	3	67.4	60.5	66.6	-	67.4	-
03/02/16 21:00	3	68.2	64.6	66.0	-	68.2	-
03/02/16 22:00	-	63.6	-	63.8	-	63.6	-
03/02/16 23:00	1	69.7	64.6	68.1	-	-	69.7
	75	66.2	60.9	66.2	64.0	67.0	68.0

Location: Gare centrale NMT # 5

