

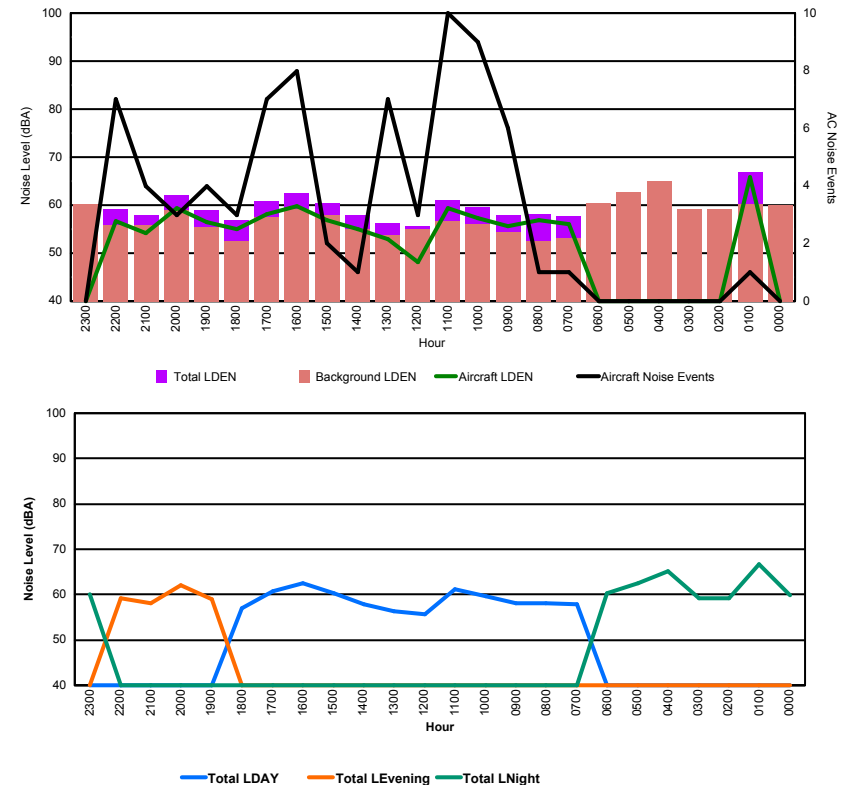


Luxembourg Airport Noise Distribution by Hour

Between 02/02/2016 00:00:00 and 02/02/2016 23:59:59 (Local Time)

Day	Aircraft Events	Total LDEN dB (A)	Aircraft LDEN dB(A)	Background LDEN dB(A)	Total LDay dB(A)	Total LEvening dB(A)	Total LNight dB (A)
02/02/16 0:00	-	59.9	-	60.0	-	-	59.9
02/02/16 1:00	1	66.8	65.8	60.2	-	-	66.8
02/02/16 2:00	-	59.1	-	59.2	-	-	59.1
02/02/16 3:00	-	59.2	-	59.2	-	-	59.2
02/02/16 4:00	-	65.1	-	65.1	-	-	65.1
02/02/16 5:00	-	62.6	-	62.7	-	-	62.6
02/02/16 6:00	-	60.4	-	60.4	-	-	60.4
02/02/16 7:00	1	57.8	56.0	53.1	57.8	-	-
02/02/16 8:00	1	58.2	56.8	52.6	58.2	-	-
02/02/16 9:00	6	58.0	55.7	54.4	58.0	-	-
02/02/16 10:00	9	59.6	57.2	56.0	59.6	-	-
02/02/16 11:00	10	61.1	59.3	56.6	61.1	-	-
02/02/16 12:00	3	55.6	48.1	54.9	55.6	-	-
02/02/16 13:00	7	56.3	53.0	53.7	56.3	-	-
02/02/16 14:00	1	57.9	54.9	55.0	57.9	-	-
02/02/16 15:00	2	60.4	56.9	58.0	60.4	-	-
02/02/16 16:00	8	62.4	59.8	59.2	62.4	-	-
02/02/16 17:00	7	60.8	58.2	57.6	60.8	-	-
02/02/16 18:00	3	56.9	55.1	52.6	56.9	-	-
02/02/16 19:00	4	59.0	56.4	55.5	-	59.0	-
02/02/16 20:00	3	62.1	59.4	59.0	-	62.1	-
02/02/16 21:00	4	58.0	54.1	55.8	-	58.0	-
02/02/16 22:00	7	59.2	56.6	55.8	-	59.2	-
02/02/16 23:00	-	60.1	-	60.2	-	-	60.1
	77	60.7	58.3	58.6	59.2	59.9	62.6

Location: Roodt/Syr NMT # 1



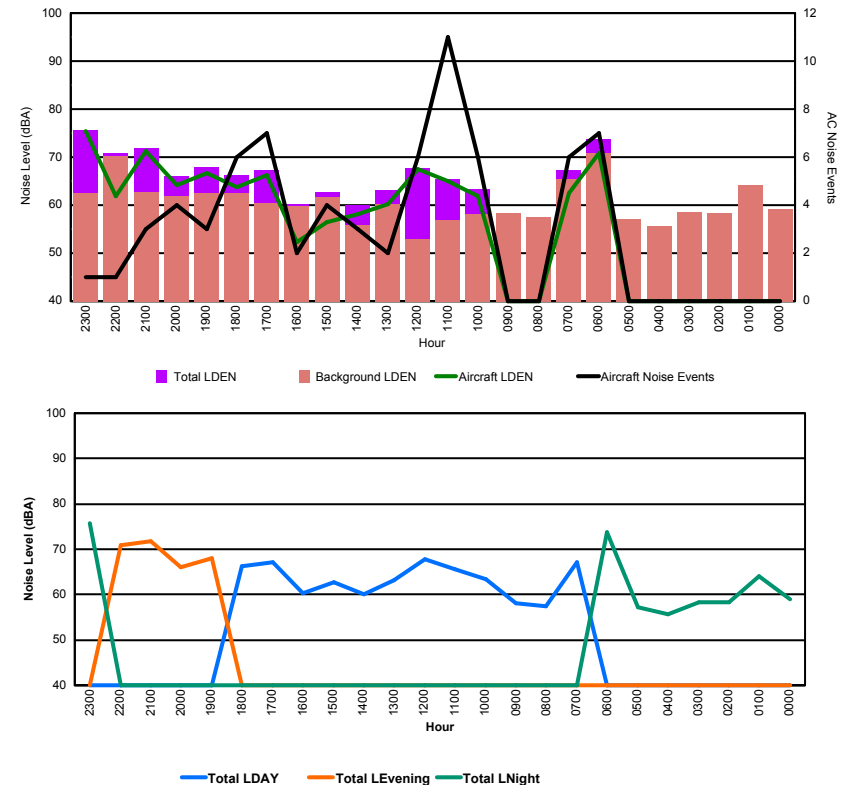


Luxembourg Airport Noise Distribution by Hour

Between 02/02/2016 00:00:00 and 02/02/2016 23:59:59 (Local Time)

Day	Aircraft Events	Total LDEN dB (A)	Aircraft LDEN dB(A)	Background LDEN dB(A)	Total LDay dB(A)	Total LEvening dB(A)	Total LNight dB (A)
02/02/16 0:00	-	59.0	-	59.1	-	-	59.0
02/02/16 1:00	-	64.1	-	64.1	-	-	64.1
02/02/16 2:00	-	58.4	-	58.4	-	-	58.4
02/02/16 3:00	-	58.4	-	58.5	-	-	58.4
02/02/16 4:00	-	55.7	-	55.7	-	-	55.7
02/02/16 5:00	-	57.1	-	57.1	-	-	57.1
02/02/16 6:00	7	73.8	70.9	70.8	-	-	73.8
02/02/16 7:00	6	67.2	62.6	65.5	67.2	-	-
02/02/16 8:00	-	57.4	-	57.5	57.4	-	-
02/02/16 9:00	-	58.2	-	58.3	58.2	-	-
02/02/16 10:00	6	63.3	61.8	58.2	63.3	-	-
02/02/16 11:00	11	65.5	64.9	56.9	65.5	-	-
02/02/16 12:00	6	67.7	67.5	53.0	67.7	-	-
02/02/16 13:00	2	63.2	60.2	60.2	63.2	-	-
02/02/16 14:00	3	60.1	58.1	55.9	60.1	-	-
02/02/16 15:00	4	62.8	56.5	61.7	62.8	-	-
02/02/16 16:00	2	60.3	52.3	59.8	60.3	-	-
02/02/16 17:00	7	67.2	66.3	60.4	67.2	-	-
02/02/16 18:00	6	66.2	63.8	62.5	66.2	-	-
02/02/16 19:00	3	68.0	66.6	62.5	-	68.0	-
02/02/16 20:00	4	66.1	64.1	61.9	-	66.1	-
02/02/16 21:00	3	71.8	71.3	62.7	-	71.8	-
02/02/16 22:00	1	70.8	61.9	70.3	-	70.8	-
02/02/16 23:00	1	75.7	75.5	62.4	-	-	75.7
	72	67.6	67.5	63.0	64.5	69.7	69.2

Location: Mid Runway NMT # 3



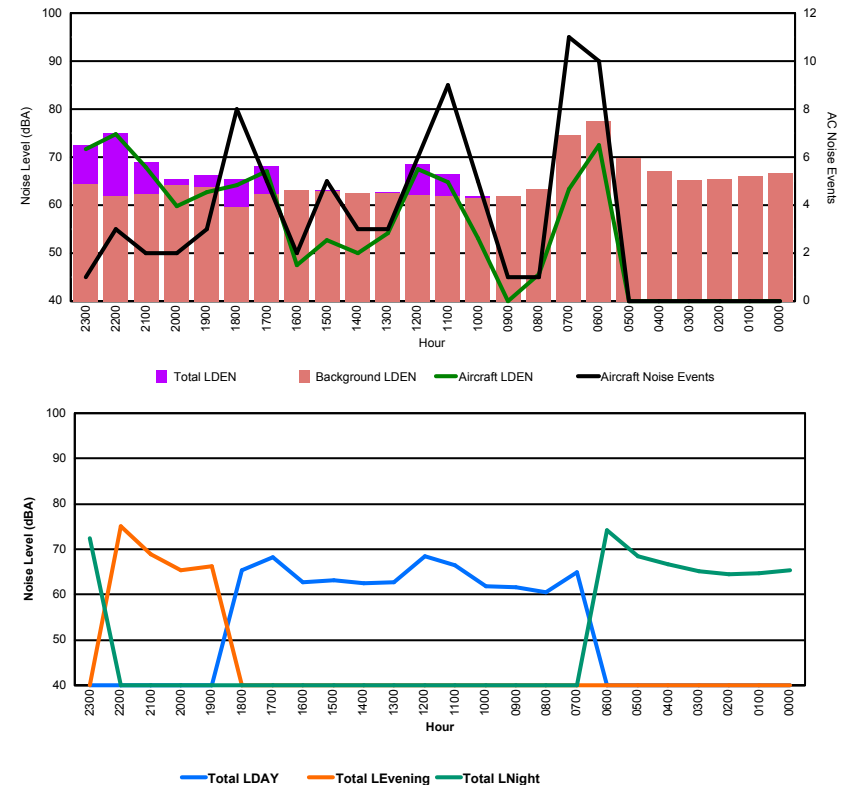


Luxembourg Airport Noise Distribution by Hour

Between 02/02/2016 00:00:00 and 02/02/2016 23:59:59 (Local Time)

Day	Aircraft Events	Total LDEN dB (A)	Aircraft LDEN dB(A)	Background LDEN dB(A)	Total LDay dB(A)	Total LEvening dB(A)	Total LNight dB (A)
02/02/16 0:00	-	65.3	-	66.6	-	-	65.3
02/02/16 1:00	-	64.7	-	66.0	-	-	64.7
02/02/16 2:00	-	64.5	-	65.5	-	-	64.5
02/02/16 3:00	-	65.1	-	65.3	-	-	65.1
02/02/16 4:00	-	66.6	-	67.0	-	-	66.6
02/02/16 5:00	-	68.4	-	69.8	-	-	68.4
02/02/16 6:00	10	74.1	72.4	77.4	-	-	74.1
02/02/16 7:00	11	65.0	63.4	74.6	65.0	-	-
02/02/16 8:00	1	60.5	45.6	63.3	60.5	-	-
02/02/16 9:00	1	61.7	40.0	61.8	61.7	-	-
02/02/16 10:00	5	61.9	53.2	61.4	61.9	-	-
02/02/16 11:00	9	66.5	64.8	61.9	66.5	-	-
02/02/16 12:00	6	68.5	67.5	62.1	68.5	-	-
02/02/16 13:00	3	62.8	54.1	62.4	62.8	-	-
02/02/16 14:00	3	62.6	50.1	62.5	62.6	-	-
02/02/16 15:00	5	63.1	52.7	63.0	63.1	-	-
02/02/16 16:00	2	62.8	47.5	63.1	62.8	-	-
02/02/16 17:00	5	68.2	67.1	62.3	68.2	-	-
02/02/16 18:00	8	65.4	64.2	59.6	65.4	-	-
02/02/16 19:00	3	66.2	62.7	63.8	-	66.2	-
02/02/16 20:00	2	65.4	59.8	64.1	-	65.4	-
02/02/16 21:00	2	69.0	68.0	62.3	-	69.0	-
02/02/16 22:00	3	75.0	74.8	61.8	-	75.0	-
02/02/16 23:00	1	72.5	71.7	64.4	-	-	72.5
	80	68.0	67.0	67.8	64.8	70.7	69.3

Location: NDB-Hamm NMT # 4





Luxembourg Airport Noise Distribution by Hour

Between 02/02/2016 00:00:00 and 02/02/2016 23:59:59 (Local Time)

Day	Aircraft Events	Total LDEN dB (A)	Aircraft LDEN dB(A)	Background LDEN dB(A)	Total LDay dB(A)	Total LEvening dB(A)	Total LNight dB (A)
02/02/16 0:00	-	64.5	-	65.3	-	-	64.5
02/02/16 1:00	-	65.7	-	66.8	-	-	65.7
02/02/16 2:00	-	64.2	-	63.3	-	-	64.2
02/02/16 3:00	-	61.5	-	61.5	-	-	61.5
02/02/16 4:00	-	64.9	-	65.1	-	-	64.9
02/02/16 5:00	-	69.7	-	71.2	-	-	69.7
02/02/16 6:00	6	72.2	66.4	73.8	-	-	72.2
02/02/16 7:00	2	64.1	53.6	66.8	64.1	-	-
02/02/16 8:00	1	65.5	48.1	68.2	65.5	-	-
02/02/16 9:00	-	66.4	-	67.4	66.4	-	-
02/02/16 10:00	6	64.4	54.9	65.1	64.4	-	-
02/02/16 11:00	7	64.4	57.8	64.6	64.4	-	-
02/02/16 12:00	3	64.3	58.0	64.2	64.3	-	-
02/02/16 13:00	4	64.6	54.4	65.5	64.6	-	-
02/02/16 14:00	1	64.3	48.4	65.3	64.3	-	-
02/02/16 15:00	1	64.7	40.8	65.5	64.7	-	-
02/02/16 16:00	1	64.7	46.2	65.4	64.7	-	-
02/02/16 17:00	5	65.6	60.7	65.0	65.6	-	-
02/02/16 18:00	8	67.3	58.3	67.0	67.3	-	-
02/02/16 19:00	2	69.5	52.0	70.0	-	69.5	-
02/02/16 20:00	1	66.9	55.7	66.9	-	66.9	-
02/02/16 21:00	2	66.6	60.7	65.5	-	66.6	-
02/02/16 22:00	3	68.1	66.4	63.6	-	68.1	-
02/02/16 23:00	1	69.5	65.3	67.4	-	-	69.5
	54	66.7	60.2	67.2	65.1	67.9	67.8

Location: Gare centrale NMT # 5

