

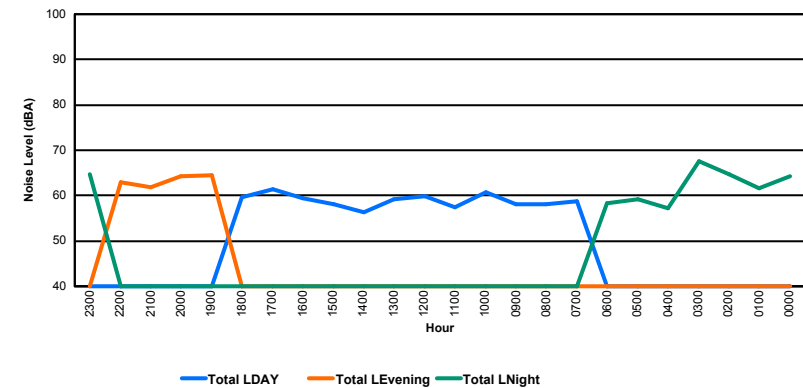
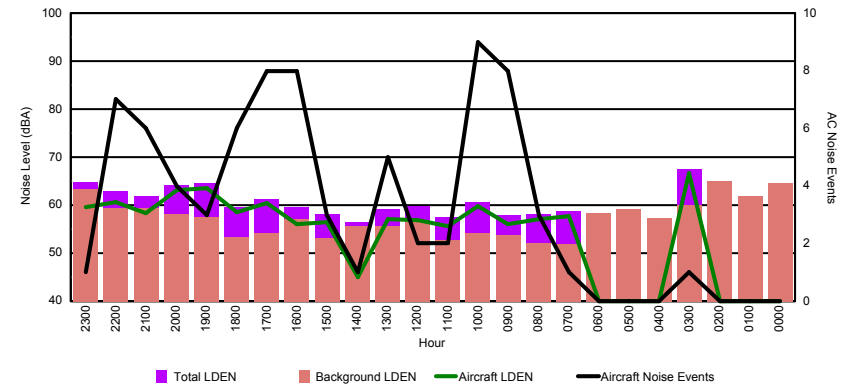


Luxembourg Airport Noise Distribution by Hour

Between 01/02/2016 00:00:00 and 01/02/2016 23:59:59 (Local Time)

Day	Aircraft Events	Total LDEN dB (A)	Aircraft LDEN dB(A)	Background LDEN dB(A)	Total LDay dB(A)	Total LEvening dB(A)	Total LNight dB (A)
01/02/16 0:00	-	64.3	-	64.6	-	-	64.3
01/02/16 1:00	-	61.7	-	61.8	-	-	61.7
01/02/16 2:00	-	64.8	-	65.0	-	-	64.8
01/02/16 3:00	1	67.5	66.6	59.9	-	-	67.5
01/02/16 4:00	-	57.3	-	57.3	-	-	57.3
01/02/16 5:00	-	59.2	-	59.2	-	-	59.2
01/02/16 6:00	-	58.3	-	58.3	-	-	58.3
01/02/16 7:00	1	58.7	57.7	51.9	58.7	-	-
01/02/16 8:00	3	58.2	57.0	52.0	58.2	-	-
01/02/16 9:00	8	58.0	56.1	53.8	58.0	-	-
01/02/16 10:00	9	60.7	59.7	54.1	60.7	-	-
01/02/16 11:00	2	57.4	55.6	52.7	57.4	-	-
01/02/16 12:00	2	59.8	56.9	56.7	59.8	-	-
01/02/16 13:00	5	59.1	57.1	55.6	59.1	-	-
01/02/16 14:00	1	56.4	45.0	55.7	56.4	-	-
01/02/16 15:00	3	58.1	56.5	53.1	58.1	-	-
01/02/16 16:00	8	59.5	56.0	57.1	59.5	-	-
01/02/16 17:00	8	61.3	60.4	54.1	61.3	-	-
01/02/16 18:00	6	59.6	58.5	53.4	59.6	-	-
01/02/16 19:00	3	64.5	63.6	57.4	-	64.5	-
01/02/16 20:00	4	64.2	63.1	58.2	-	64.2	-
01/02/16 21:00	6	61.8	58.4	59.3	-	61.8	-
01/02/16 22:00	7	63.0	60.7	59.3	-	63.0	-
01/02/16 23:00	1	64.8	59.5	63.4	-	-	64.8
	78	61.8	60.0	59.0	59.1	63.5	63.5

Location: Roodt/Syr NMT # 1



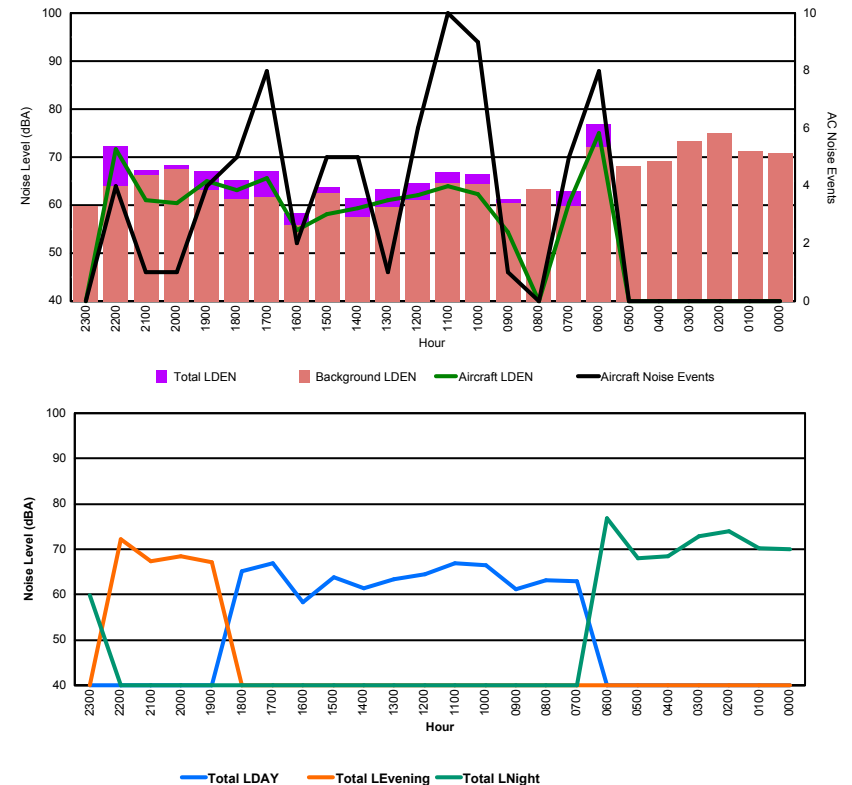


Luxembourg Airport Noise Distribution by Hour

Between 01/02/2016 00:00:00 and 01/02/2016 23:59:59 (Local Time)

Day	Aircraft Events	Total LDEN dB (A)	Aircraft LDEN dB(A)	Background LDEN dB(A)	Total LDay dB(A)	Total LEvening dB(A)	Total LNight dB (A)
01/02/16 0:00	-	70.1	-	70.9	-	-	70.1
01/02/16 1:00	-	70.2	-	71.2	-	-	70.2
01/02/16 2:00	-	74.0	-	75.1	-	-	74.0
01/02/16 3:00	-	72.9	-	73.3	-	-	72.9
01/02/16 4:00	-	68.4	-	69.1	-	-	68.4
01/02/16 5:00	-	68.0	-	68.2	-	-	68.0
01/02/16 6:00	8	76.8	75.1	72.0	-	-	76.8
01/02/16 7:00	5	63.0	60.5	59.8	63.0	-	-
01/02/16 8:00	-	63.2	-	63.3	63.2	-	-
01/02/16 9:00	1	61.2	54.4	60.4	61.2	-	-
01/02/16 10:00	9	66.4	62.2	64.4	66.4	-	-
01/02/16 11:00	10	66.9	64.0	64.5	66.9	-	-
01/02/16 12:00	6	64.5	62.1	61.1	64.5	-	-
01/02/16 13:00	1	63.3	61.0	59.5	63.3	-	-
01/02/16 14:00	5	61.5	59.4	57.5	61.5	-	-
01/02/16 15:00	5	63.8	58.1	62.5	63.8	-	-
01/02/16 16:00	2	58.3	54.8	55.8	58.3	-	-
01/02/16 17:00	8	67.0	65.6	61.7	67.0	-	-
01/02/16 18:00	5	65.2	63.1	61.2	65.2	-	-
01/02/16 19:00	4	67.1	64.9	63.2	-	67.1	-
01/02/16 20:00	1	68.4	60.5	67.6	-	68.4	-
01/02/16 21:00	1	67.3	61.0	66.2	-	67.3	-
01/02/16 22:00	4	72.3	71.6	64.0	-	72.3	-
01/02/16 23:00	-	59.8	-	59.8	-	-	59.8
	75	69.1	66.3	67.7	64.3	69.3	72.0

Location: Mid Runway NMT # 3

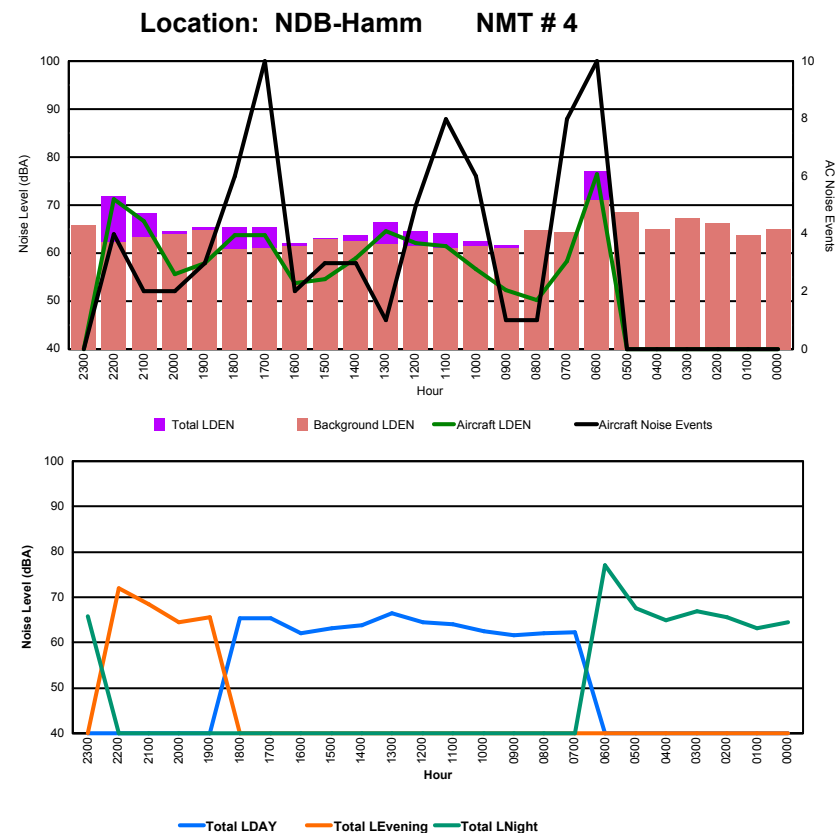




Luxembourg Airport Noise Distribution by Hour

Between 01/02/2016 00:00:00 and 01/02/2016 23:59:59 (Local Time)

Day	Aircraft Events	Total LDEN dB (A)	Aircraft LDEN dB(A)	Background LDEN dB(A)	Total LDay dB(A)	Total LEvening dB(A)	Total LNight dB (A)
01/02/16 0:00	-	64.4	-	64.9	-	-	64.4
01/02/16 1:00	-	63.2	-	63.7	-	-	63.2
01/02/16 2:00	-	65.6	-	66.3	-	-	65.6
01/02/16 3:00	-	67.0	-	67.2	-	-	67.0
01/02/16 4:00	-	65.0	-	65.1	-	-	65.0
01/02/16 5:00	-	67.6	-	68.5	-	-	67.6
01/02/16 6:00	10	77.1	76.4	71.0	-	-	77.1
01/02/16 7:00	8	62.2	58.3	64.3	62.2	-	-
01/02/16 8:00	1	62.0	50.3	64.8	62.0	-	-
01/02/16 9:00	1	61.6	52.3	61.1	61.6	-	-
01/02/16 10:00	6	62.5	56.6	61.4	62.5	-	-
01/02/16 11:00	8	64.1	61.4	61.1	64.1	-	-
01/02/16 12:00	5	64.6	62.0	61.4	64.6	-	-
01/02/16 13:00	1	66.4	64.6	61.9	66.4	-	-
01/02/16 14:00	3	63.8	58.9	62.4	63.8	-	-
01/02/16 15:00	3	63.2	54.5	63.0	63.2	-	-
01/02/16 16:00	2	62.0	53.7	61.4	62.0	-	-
01/02/16 17:00	10	65.4	63.7	61.1	65.4	-	-
01/02/16 18:00	6	65.4	63.8	60.8	65.4	-	-
01/02/16 19:00	3	65.5	58.0	64.7	-	65.5	-
01/02/16 20:00	2	64.5	55.6	64.0	-	64.5	-
01/02/16 21:00	2	68.4	66.7	63.4	-	68.4	-
01/02/16 22:00	4	71.9	71.3	62.3	-	71.9	-
01/02/16 23:00	-	65.8	-	65.8	-	-	65.8
	75	67.5	66.5	64.7	63.9	68.6	69.9





Luxembourg Airport Noise Distribution by Hour

Between 01/02/2016 00:00:00 and 01/02/2016 23:59:59 (Local Time)

Day	Aircraft Events	Total LDEN dB (A)	Aircraft LDEN dB(A)	Background LDEN dB(A)	Total LDay dB(A)	Total LEvening dB(A)	Total LNight dB (A)
01/02/16 0:00	-	66.6	-	67.6	-	-	66.6
01/02/16 1:00	-	65.0	-	65.8	-	-	65.0
01/02/16 2:00	-	66.7	-	67.5	-	-	66.7
01/02/16 3:00	-	66.8	-	67.3	-	-	66.8
01/02/16 4:00	-	66.7	-	67.1	-	-	66.7
01/02/16 5:00	-	69.6	-	71.0	-	-	69.6
01/02/16 6:00	6	72.5	67.9	72.7	-	-	72.5
01/02/16 7:00	2	66.1	50.9	68.8	66.1	-	-
01/02/16 8:00	1	66.9	52.4	69.9	66.9	-	-
01/02/16 9:00	1	65.7	45.7	67.2	65.7	-	-
01/02/16 10:00	6	65.0	54.2	66.0	65.0	-	-
01/02/16 11:00	8	65.8	59.6	66.8	65.8	-	-
01/02/16 12:00	3	64.6	55.5	65.0	64.6	-	-
01/02/16 13:00	1	65.4	57.5	65.5	65.4	-	-
01/02/16 14:00	4	64.4	52.4	64.9	64.4	-	-
01/02/16 15:00	1	64.1	51.4	64.2	64.1	-	-
01/02/16 16:00	2	63.9	49.6	64.5	63.9	-	-
01/02/16 17:00	8	63.1	57.3	62.2	63.1	-	-
01/02/16 18:00	4	63.4	55.9	62.7	63.4	-	-
01/02/16 19:00	-	66.6	-	66.6	-	66.6	-
01/02/16 20:00	-	65.7	-	65.7	-	65.7	-
01/02/16 21:00	2	65.6	59.5	64.5	-	65.6	-
01/02/16 22:00	4	65.9	63.4	62.6	-	65.9	-
01/02/16 23:00	-	66.0	-	66.0	-	-	66.0
	53	66.5	59.4	67.1	65.0	66.0	68.2

Location: Gare centrale NMT # 5

