

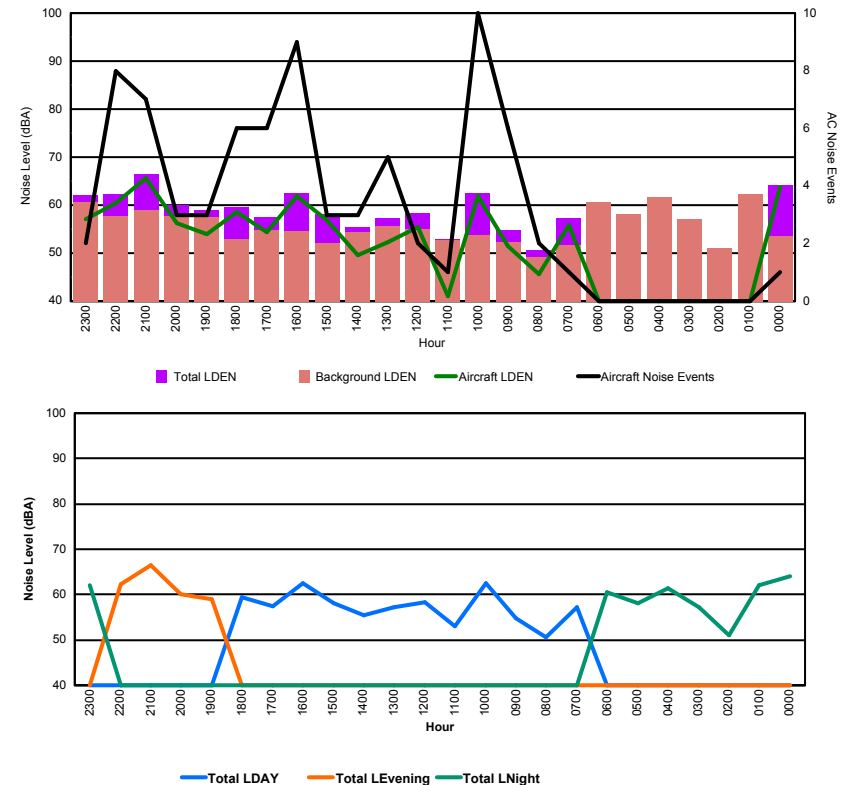


Luxembourg Airport Noise Distribution by Hour

Between 29/01/2016 00:00:00 and 29/01/2016 23:59:59 (Local Time)

Day	Aircraft Events	Total LDEN dB (A)	Aircraft LDEN dB(A)	Background LDEN dB(A)	Total LDay dB(A)	Total LEvening dB(A)	Total LNight dB (A)
29/01/16 0:00	1	64.1	63.7	53.5	-	-	64.1
29/01/16 1:00	-	62.1	-	62.2	-	-	62.1
29/01/16 2:00	-	51.0	-	51.0	-	-	51.0
29/01/16 3:00	-	57.1	-	57.1	-	-	57.1
29/01/16 4:00	-	61.5	-	61.6	-	-	61.5
29/01/16 5:00	-	58.1	-	58.2	-	-	58.1
29/01/16 6:00	-	60.5	-	60.6	-	-	60.5
29/01/16 7:00	1	57.3	55.9	51.6	57.3	-	-
29/01/16 8:00	2	50.7	45.7	49.1	50.7	-	-
29/01/16 9:00	6	54.7	51.4	52.2	54.7	-	-
29/01/16 10:00	10	62.4	61.8	53.8	62.4	-	-
29/01/16 11:00	1	53.0	41.0	52.8	53.0	-	-
29/01/16 12:00	2	58.3	55.5	55.1	58.3	-	-
29/01/16 13:00	5	57.2	52.3	55.6	57.2	-	-
29/01/16 14:00	3	55.5	49.6	54.3	55.5	-	-
29/01/16 15:00	3	58.1	56.8	52.1	58.1	-	-
29/01/16 16:00	9	62.6	61.9	54.5	62.6	-	-
29/01/16 17:00	6	57.4	54.3	54.7	57.4	-	-
29/01/16 18:00	6	59.5	58.5	52.9	59.5	-	-
29/01/16 19:00	3	58.9	53.9	57.4	-	58.9	-
29/01/16 20:00	3	60.0	56.3	57.8	-	60.0	-
29/01/16 21:00	7	66.5	65.7	59.0	-	66.5	-
29/01/16 22:00	8	62.2	60.5	57.7	-	62.2	-
29/01/16 23:00	2	62.1	57.1	60.6	-	-	62.1
	78	60.3	58.9	57.1	58.4	63.0	60.8

Location: Roodt/Syr NMT # 1



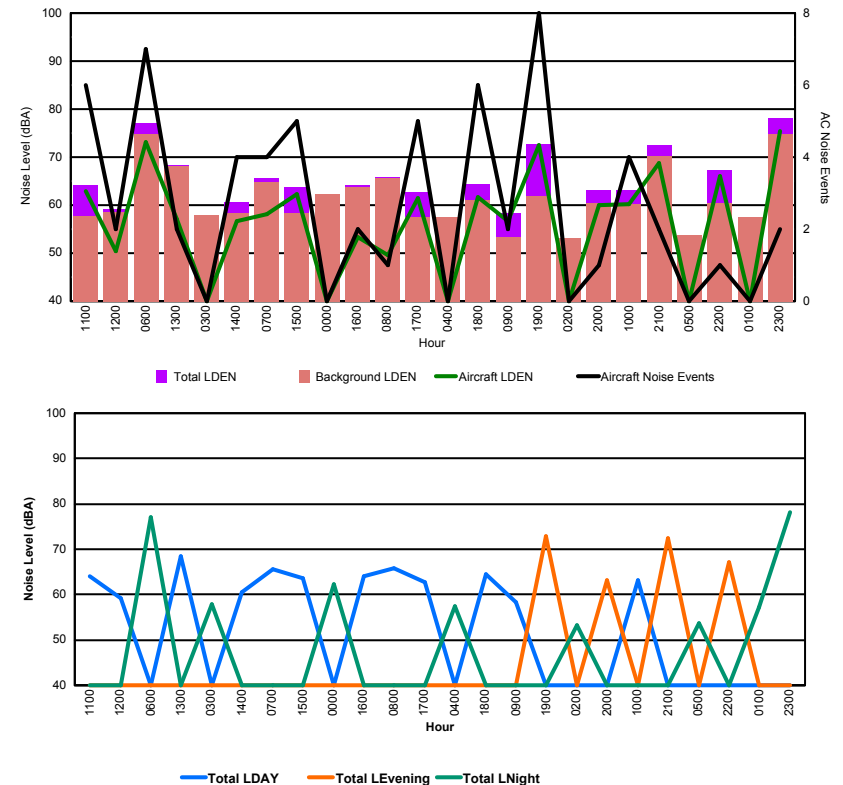


Luxembourg Airport Noise Distribution by Hour

Between 29/01/2016 00:00:00 and 29/01/2016 23:59:59 (Local Time)

Day	Aircraft Events	Total LDEN dB (A)	Aircraft LDEN dB(A)	Background LDEN dB(A)	Total LDay dB(A)	Total LEvening dB(A)	Total LNight dB (A)
29/01/16 0:00	-	62.2	-	62.2	-	-	62.2
29/01/16 1:00	-	57.3	-	57.4	-	-	57.3
29/01/16 2:00	-	53.2	-	53.2	-	-	53.2
29/01/16 3:00	-	57.9	-	57.9	-	-	57.9
29/01/16 4:00	-	57.5	-	57.5	-	-	57.5
29/01/16 5:00	-	53.7	-	53.7	-	-	53.7
29/01/16 6:00	7	77.0	73.1	74.7	-	-	77.0
29/01/16 7:00	4	65.6	58.2	64.8	65.6	-	-
29/01/16 8:00	1	65.8	49.5	65.7	65.8	-	-
29/01/16 9:00	2	58.3	56.6	53.4	58.3	-	-
29/01/16 10:00	4	63.1	60.2	60.2	63.1	-	-
29/01/16 11:00	6	64.1	63.0	57.8	64.1	-	-
29/01/16 12:00	2	59.1	50.5	58.5	59.1	-	-
29/01/16 13:00	2	68.4	57.1	68.1	68.4	-	-
29/01/16 14:00	4	60.6	56.6	58.3	60.6	-	-
29/01/16 15:00	5	63.7	62.3	58.4	63.7	-	-
29/01/16 16:00	2	64.1	53.4	63.7	64.1	-	-
29/01/16 17:00	5	62.8	61.4	57.4	62.8	-	-
29/01/16 18:00	6	64.4	61.7	61.1	64.4	-	-
29/01/16 19:00	8	72.8	72.5	61.8	-	72.8	-
29/01/16 20:00	1	63.2	59.9	60.5	-	63.2	-
29/01/16 21:00	2	72.5	68.7	70.2	-	72.5	-
29/01/16 22:00	1	67.2	66.1	60.5	-	67.2	-
29/01/16 23:00	2	78.1	75.4	74.7	-	-	78.1
	64	69.1	67.2	66.1	64.1	70.4	71.7

Location: Mid Runway NMT # 3



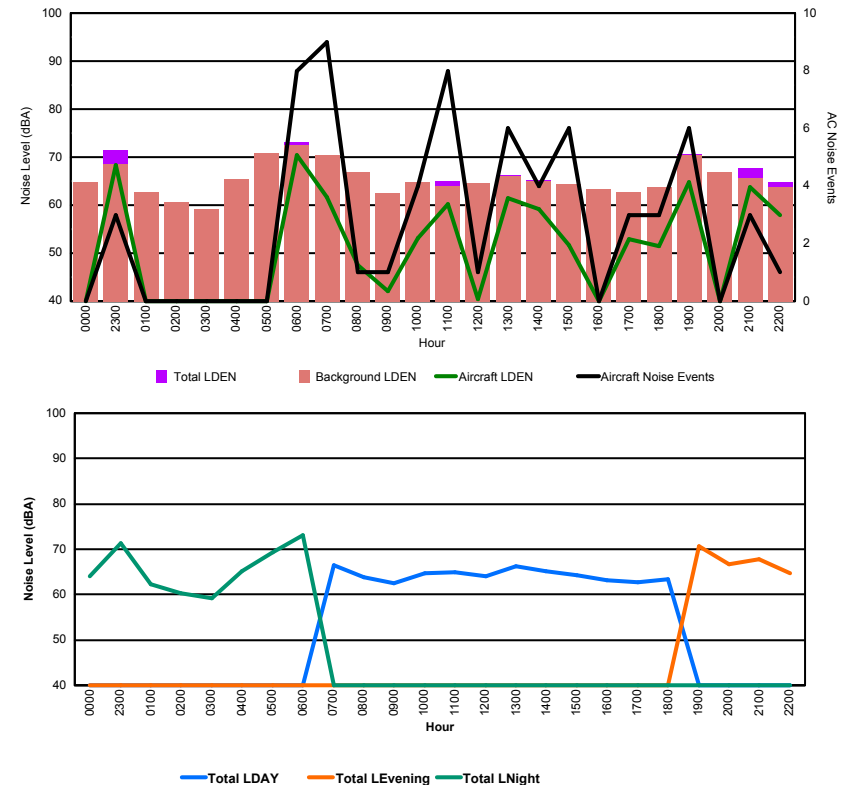


Luxembourg Airport Noise Distribution by Hour

Between 29/01/2016 00:00:00 and 29/01/2016 23:59:59 (Local Time)

Day	Aircraft Events	Total LDEN dB (A)	Aircraft LDEN dB(A)	Background LDEN dB(A)	Total LDay dB(A)	Total LEvening dB(A)	Total LNight dB (A)
29/01/16 0:00	-	64.1	-	64.8	-	-	64.1
29/01/16 1:00	-	62.3	-	62.7	-	-	62.3
29/01/16 2:00	-	60.4	-	60.6	-	-	60.4
29/01/16 3:00	-	59.2	-	59.2	-	-	59.2
29/01/16 4:00	-	65.2	-	65.4	-	-	65.2
29/01/16 5:00	-	69.3	-	70.8	-	-	69.3
29/01/16 6:00	8	73.2	70.5	72.5	-	-	73.2
29/01/16 7:00	9	66.4	61.7	70.4	66.4	-	-
29/01/16 8:00	1	63.8	47.6	66.9	63.8	-	-
29/01/16 9:00	1	62.4	42.0	62.5	62.4	-	-
29/01/16 10:00	4	64.8	53.2	64.8	64.8	-	-
29/01/16 11:00	8	64.9	60.3	64.0	64.9	-	-
29/01/16 12:00	1	64.0	40.5	64.6	64.0	-	-
29/01/16 13:00	6	66.3	61.4	66.1	66.3	-	-
29/01/16 14:00	4	65.2	59.2	65.0	65.2	-	-
29/01/16 15:00	6	64.2	51.7	64.4	64.2	-	-
29/01/16 16:00	-	63.2	-	63.4	63.2	-	-
29/01/16 17:00	3	62.8	52.9	62.8	62.8	-	-
29/01/16 18:00	3	63.3	51.5	63.7	63.3	-	-
29/01/16 19:00	6	70.7	64.7	70.4	-	70.7	-
29/01/16 20:00	-	66.7	-	66.8	-	66.7	-
29/01/16 21:00	3	67.7	63.7	65.7	-	67.7	-
29/01/16 22:00	1	64.7	57.9	63.7	-	64.7	-
29/01/16 23:00	3	71.4	68.3	68.6	-	-	71.4
	67	66.7	62.6	66.7	64.5	68.0	68.2

Location: Gare centrale NMT # 5



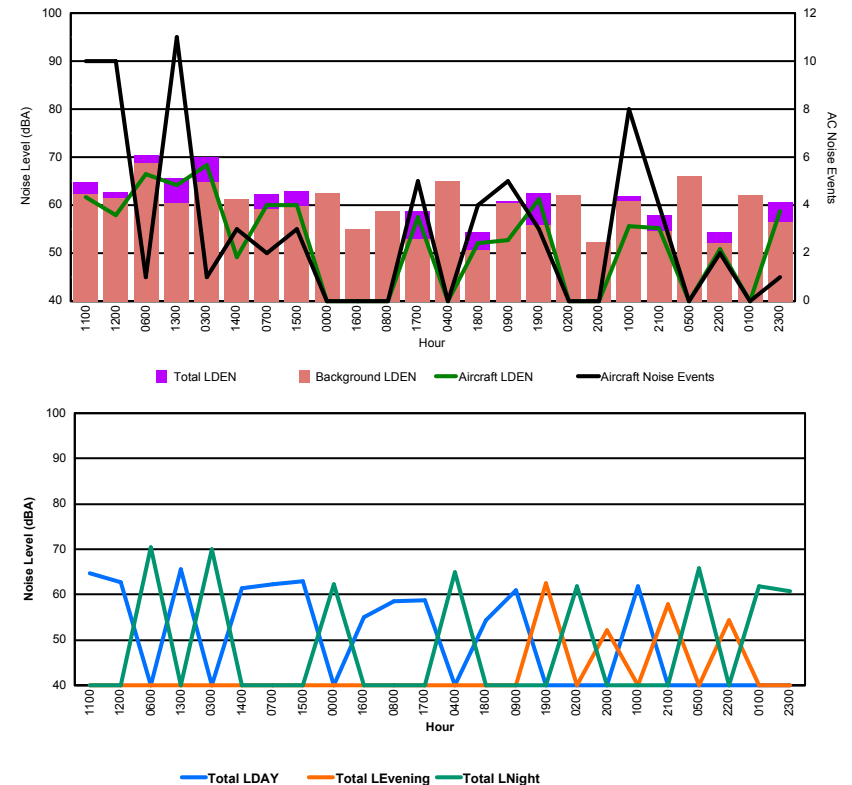


Luxembourg Airport Noise Distribution by Hour

Between 30/01/2016 00:00:00 and 30/01/2016 23:59:59 (Local Time)

Day	Aircraft Events	Total LDEN dB (A)	Aircraft LDEN dB(A)	Background LDEN dB(A)	Total LDay dB(A)	Total LEvening dB(A)	Total LNight dB (A)
30/01/16 0:00	-	62.3	-	62.6	-	-	62.3
30/01/16 1:00	-	61.9	-	62.0	-	-	61.9
30/01/16 2:00	-	61.9	-	62.1	-	-	61.9
30/01/16 3:00	1	69.9	68.3	64.7	-	-	69.9
30/01/16 4:00	-	65.0	-	65.1	-	-	65.0
30/01/16 5:00	-	65.8	-	66.0	-	-	65.8
30/01/16 6:00	1	70.5	66.5	68.7	-	-	70.5
30/01/16 7:00	2	62.3	59.9	59.1	62.3	-	-
30/01/16 8:00	-	58.5	-	58.8	58.5	-	-
30/01/16 9:00	5	60.9	52.7	60.4	60.9	-	-
30/01/16 10:00	8	61.8	55.6	60.9	61.8	-	-
30/01/16 11:00	10	64.7	61.6	62.2	64.7	-	-
30/01/16 12:00	10	62.8	57.9	61.5	62.8	-	-
30/01/16 13:00	11	65.6	64.2	60.4	65.6	-	-
30/01/16 14:00	3	61.3	49.2	61.3	61.3	-	-
30/01/16 15:00	3	62.9	60.1	59.8	62.9	-	-
30/01/16 16:00	-	54.9	-	55.0	54.9	-	-
30/01/16 17:00	5	58.8	57.6	53.0	58.8	-	-
30/01/16 18:00	4	54.3	52.0	50.6	54.3	-	-
30/01/16 19:00	3	62.4	61.3	55.8	-	62.4	-
30/01/16 20:00	-	52.2	-	52.2	-	52.2	-
30/01/16 21:00	4	57.9	55.3	54.6	-	57.9	-
30/01/16 22:00	2	54.4	50.8	52.0	-	54.4	-
30/01/16 23:00	1	60.7	58.7	56.4	-	-	60.7
	73	63.6	61.4	61.6	61.8	58.4	66.3

Location: Roodt/Syr NMT # 1

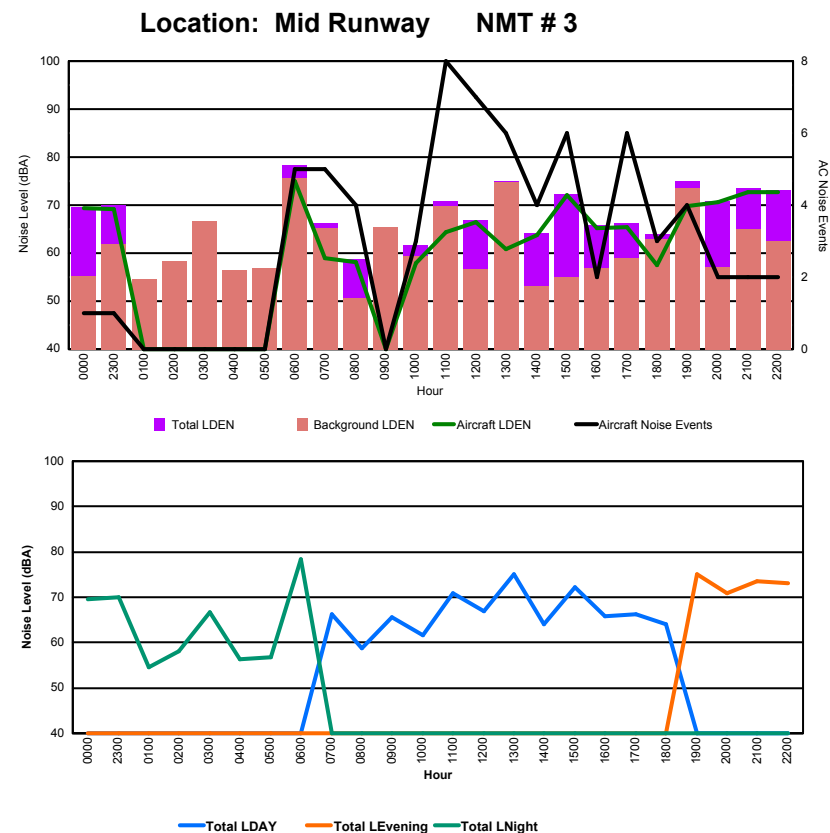




Luxembourg Airport Noise Distribution by Hour

Between 30/01/2016 00:00:00 and 30/01/2016 23:59:59 (Local Time)

Day	Aircraft Events	Total LDEN dB (A)	Aircraft LDEN dB(A)	Background LDEN dB(A)	Total LDay dB(A)	Total LEvening dB(A)	Total LNight dB (A)
30/01/16 0:00	1	69.5	69.3	55.2	-	-	69.5
30/01/16 1:00	-	54.6	-	54.6	-	-	54.6
30/01/16 2:00	-	58.2	-	58.3	-	-	58.2
30/01/16 3:00	-	66.6	-	66.7	-	-	66.6
30/01/16 4:00	-	56.4	-	56.4	-	-	56.4
30/01/16 5:00	-	56.8	-	56.8	-	-	56.8
30/01/16 6:00	5	78.4	74.9	75.7	-	-	78.4
30/01/16 7:00	5	66.2	59.0	65.3	66.2	-	-
30/01/16 8:00	4	58.8	58.1	50.7	58.8	-	-
30/01/16 9:00	-	65.5	-	65.4	65.5	-	-
30/01/16 10:00	3	61.7	58.0	59.3	61.7	-	-
30/01/16 11:00	8	70.9	64.4	69.8	70.9	-	-
30/01/16 12:00	7	66.9	66.5	56.6	66.9	-	-
30/01/16 13:00	6	75.0	60.9	74.8	75.0	-	-
30/01/16 14:00	4	64.1	63.8	53.1	64.1	-	-
30/01/16 15:00	6	72.2	72.1	55.0	72.2	-	-
30/01/16 16:00	2	65.9	65.3	56.8	65.9	-	-
30/01/16 17:00	6	66.3	65.5	59.0	66.3	-	-
30/01/16 18:00	3	64.0	57.6	62.9	64.0	-	-
30/01/16 19:00	4	75.1	69.7	73.6	-	75.1	-
30/01/16 20:00	2	70.8	70.6	57.1	-	70.8	-
30/01/16 21:00	2	73.5	72.8	64.9	-	73.5	-
30/01/16 22:00	2	73.1	72.8	62.4	-	73.1	-
30/01/16 23:00	1	70.0	69.2	61.8	-	-	70.0
	71	70.5	69.0	67.2	68.7	73.4	70.7

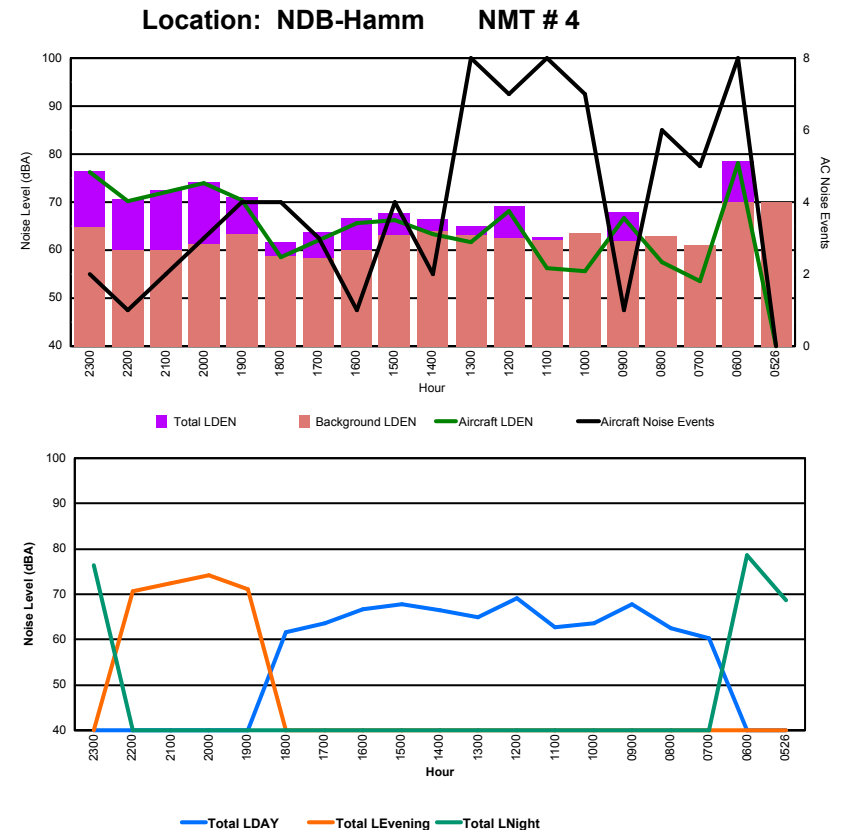




Luxembourg Airport Noise Distribution by Hour

Between 30/01/2016 00:00:00 and 30/01/2016 23:59:59 (Local Time)

Day	Aircraft Events	Total LDEN dB (A)	Aircraft LDEN dB(A)	Background LDEN dB(A)	Total LDay dB(A)	Total LEvening dB(A)	Total LNight dB (A)
30/01/16 5:26	-	68.7	-	69.9	-	-	68.7
30/01/16 6:00	8	78.5	78.1	69.9	-	-	78.5
30/01/16 7:00	5	60.4	53.5	61.1	60.4	-	-
30/01/16 8:00	6	62.5	57.6	62.9	62.5	-	-
30/01/16 9:00	1	67.9	66.7	61.9	67.9	-	-
30/01/16 10:00	7	63.5	55.6	63.5	63.5	-	-
30/01/16 11:00	8	62.8	56.3	62.0	62.8	-	-
30/01/16 12:00	7	69.1	68.2	62.4	69.1	-	-
30/01/16 13:00	8	65.0	61.6	63.1	65.0	-	-
30/01/16 14:00	2	66.4	63.3	63.9	66.4	-	-
30/01/16 15:00	4	67.8	66.2	63.1	67.8	-	-
30/01/16 16:00	1	66.7	65.6	60.1	66.7	-	-
30/01/16 17:00	3	63.7	62.1	58.4	63.7	-	-
30/01/16 18:00	4	61.6	58.5	58.8	61.6	-	-
30/01/16 19:00	4	71.1	70.4	63.3	-	71.1	-
30/01/16 20:00	3	74.1	73.9	61.2	-	74.1	-
30/01/16 21:00	2	72.4	72.1	60.0	-	72.4	-
30/01/16 22:00	1	70.6	70.2	60.0	-	70.6	-
30/01/16 23:00	2	76.5	76.2	64.7	-	-	76.5
	76	70.9	70.3	64.0	65.6	72.3	76.1



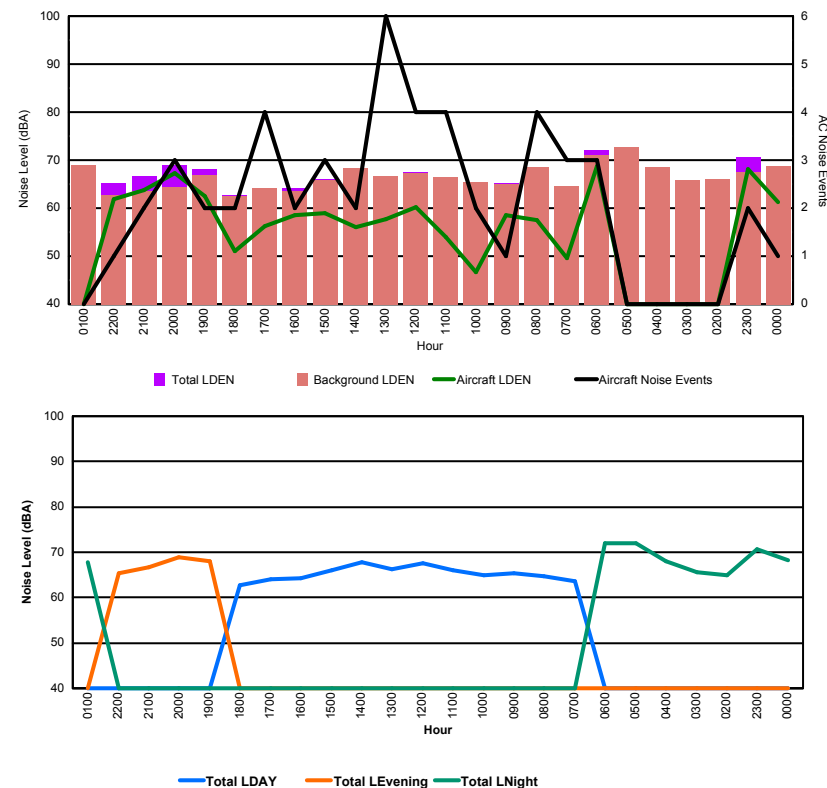


Luxembourg Airport Noise Distribution by Hour

Between 30/01/2016 00:00:00 and 30/01/2016 23:59:59 (Local Time)

Day	Aircraft Events	Total LDEN dB (A)	Aircraft LDEN dB(A)	Background LDEN dB(A)	Total LDay dB(A)	Total LEvening dB(A)	Total LNight dB (A)
30/01/16 0:00	1	68.2	61.2	68.8	-	-	68.2
30/01/16 1:00	-	67.9	-	69.0	-	-	67.9
30/01/16 2:00	-	64.9	-	66.1	-	-	64.9
30/01/16 3:00	-	65.6	-	65.8	-	-	65.6
30/01/16 4:00	-	68.0	-	68.6	-	-	68.0
30/01/16 5:00	-	72.0	-	72.7	-	-	72.0
30/01/16 6:00	3	72.0	68.7	71.0	-	-	72.0
30/01/16 7:00	3	63.7	49.5	64.6	63.7	-	-
30/01/16 8:00	4	64.8	57.6	68.5	64.8	-	-
30/01/16 9:00	1	65.3	58.5	64.9	65.3	-	-
30/01/16 10:00	2	65.0	46.6	65.5	65.0	-	-
30/01/16 11:00	4	66.1	53.9	66.5	66.1	-	-
30/01/16 12:00	4	67.6	60.2	67.3	67.6	-	-
30/01/16 13:00	6	66.3	57.7	66.7	66.3	-	-
30/01/16 14:00	2	67.8	56.0	68.3	67.8	-	-
30/01/16 15:00	3	66.0	58.9	65.9	66.0	-	-
30/01/16 16:00	2	64.2	58.5	63.6	64.2	-	-
30/01/16 17:00	4	64.1	56.2	64.2	64.1	-	-
30/01/16 18:00	2	62.7	51.0	62.6	62.7	-	-
30/01/16 19:00	2	68.1	62.6	66.8	-	68.1	-
30/01/16 20:00	3	69.0	67.2	64.4	-	69.0	-
30/01/16 21:00	2	66.6	63.8	63.5	-	66.6	-
30/01/16 22:00	1	65.3	61.8	62.8	-	65.3	-
30/01/16 23:00	2	70.7	68.1	67.4	-	-	70.7
	51	67.5	62.2	67.3	65.6	67.5	69.4

Location: Gare centrale NMT # 5



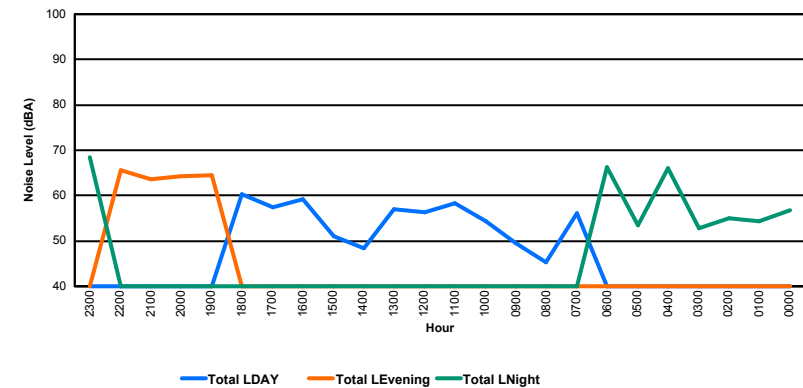
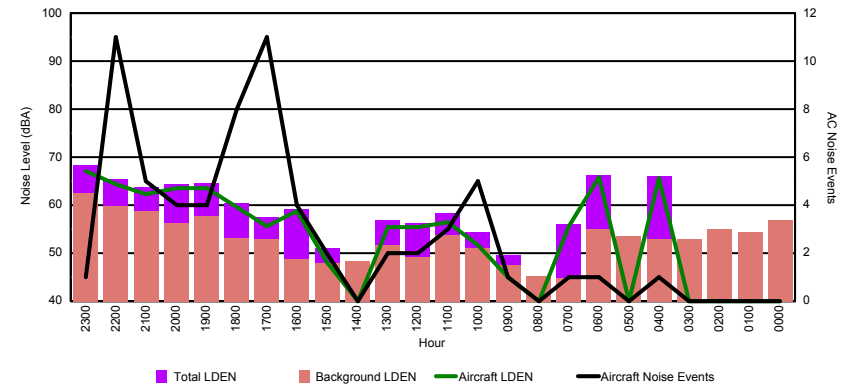


Luxembourg Airport Noise Distribution by Hour

Between 31/01/2016 00:00:00 and 31/01/2016 23:59:59 (Local Time)

Day	Aircraft Events	Total LDEN dB (A)	Aircraft LDEN dB(A)	Background LDEN dB(A)	Total LDay dB(A)	Total LEvening dB(A)	Total LNight dB (A)
31/01/16 0:00	-	56.8	-	56.8	-	-	56.8
31/01/16 1:00	-	54.4	-	54.4	-	-	54.4
31/01/16 2:00	-	54.9	-	54.9	-	-	54.9
31/01/16 3:00	-	52.9	-	52.9	-	-	52.9
31/01/16 4:00	1	66.0	65.7	52.9	-	-	66.0
31/01/16 5:00	-	53.5	-	53.6	-	-	53.5
31/01/16 6:00	1	66.2	65.9	54.9	-	-	66.2
31/01/16 7:00	1	56.0	55.6	44.8	56.0	-	-
31/01/16 8:00	-	45.3	-	45.3	45.3	-	-
31/01/16 9:00	1	49.5	45.1	47.5	49.5	-	-
31/01/16 10:00	5	54.4	51.7	51.1	54.4	-	-
31/01/16 11:00	3	58.3	56.5	53.7	58.3	-	-
31/01/16 12:00	2	56.3	55.4	49.2	56.3	-	-
31/01/16 13:00	2	56.9	55.4	51.6	56.9	-	-
31/01/16 14:00	-	48.3	-	48.3	48.3	-	-
31/01/16 15:00	2	51.0	48.2	47.9	51.0	-	-
31/01/16 16:00	4	59.2	58.8	48.8	59.2	-	-
31/01/16 17:00	11	57.5	55.7	53.0	57.5	-	-
31/01/16 18:00	8	60.4	59.6	53.2	60.4	-	-
31/01/16 19:00	4	64.5	63.5	57.7	-	64.5	-
31/01/16 20:00	4	64.3	63.6	56.2	-	64.3	-
31/01/16 21:00	5	63.7	62.2	58.7	-	63.7	-
31/01/16 22:00	11	65.5	64.3	59.7	-	65.5	-
31/01/16 23:00	1	68.4	67.1	62.6	-	-	68.4
	66	61.4	61.7	55.1	56.3	64.5	63.2

Location: Roodt/Syr NMT # 1



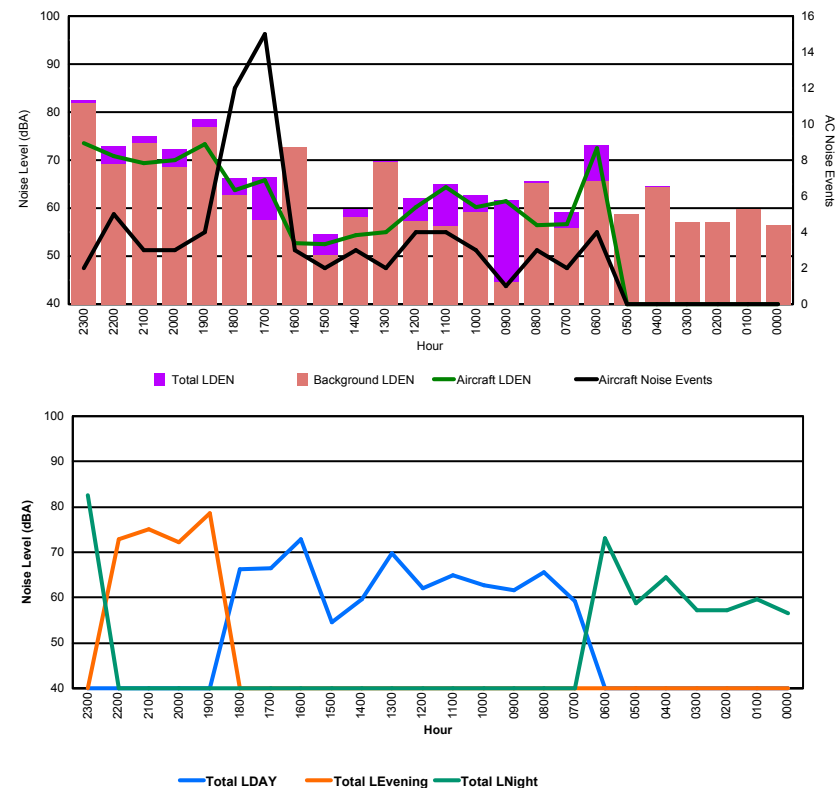


Luxembourg Airport Noise Distribution by Hour

Between 31/01/2016 00:00:00 and 31/01/2016 23:59:59 (Local Time)

Day	Aircraft Events	Total LDEN dB (A)	Aircraft LDEN dB(A)	Background LDEN dB(A)	Total LDay dB(A)	Total LEvening dB(A)	Total LNight dB (A)
31/01/16 0:00	-	56.5	-	56.5	-	-	56.5
31/01/16 1:00	-	59.7	-	59.8	-	-	59.7
31/01/16 2:00	-	57.1	-	57.1	-	-	57.1
31/01/16 3:00	-	57.1	-	57.1	-	-	57.1
31/01/16 4:00	-	64.5	-	64.4	-	-	64.5
31/01/16 5:00	-	58.8	-	58.8	-	-	58.8
31/01/16 6:00	4	73.2	72.4	65.7	-	-	73.2
31/01/16 7:00	2	59.2	56.6	55.8	59.2	-	-
31/01/16 8:00	3	65.7	56.4	65.2	65.7	-	-
31/01/16 9:00	1	61.6	61.5	44.6	61.6	-	-
31/01/16 10:00	3	62.7	60.3	59.1	62.7	-	-
31/01/16 11:00	4	64.9	64.3	56.3	64.9	-	-
31/01/16 12:00	4	62.0	60.2	57.3	62.0	-	-
31/01/16 13:00	2	69.7	54.9	69.6	69.7	-	-
31/01/16 14:00	3	59.7	54.3	58.2	59.7	-	-
31/01/16 15:00	2	54.5	52.5	50.2	54.5	-	-
31/01/16 16:00	3	72.8	52.8	72.7	72.8	-	-
31/01/16 17:00	15	66.5	65.9	57.5	66.5	-	-
31/01/16 18:00	12	66.2	63.7	62.7	66.2	-	-
31/01/16 19:00	4	78.5	73.4	76.9	-	78.5	-
31/01/16 20:00	3	72.3	70.0	68.5	-	72.3	-
31/01/16 21:00	3	75.0	69.3	73.6	-	75.0	-
31/01/16 22:00	5	72.9	70.8	69.1	-	72.9	-
31/01/16 23:00	2	82.5	73.6	81.9	-	-	82.5
	75	72.2	67.7	70.8	66.3	75.4	74.1

Location: Mid Runway NMT # 3



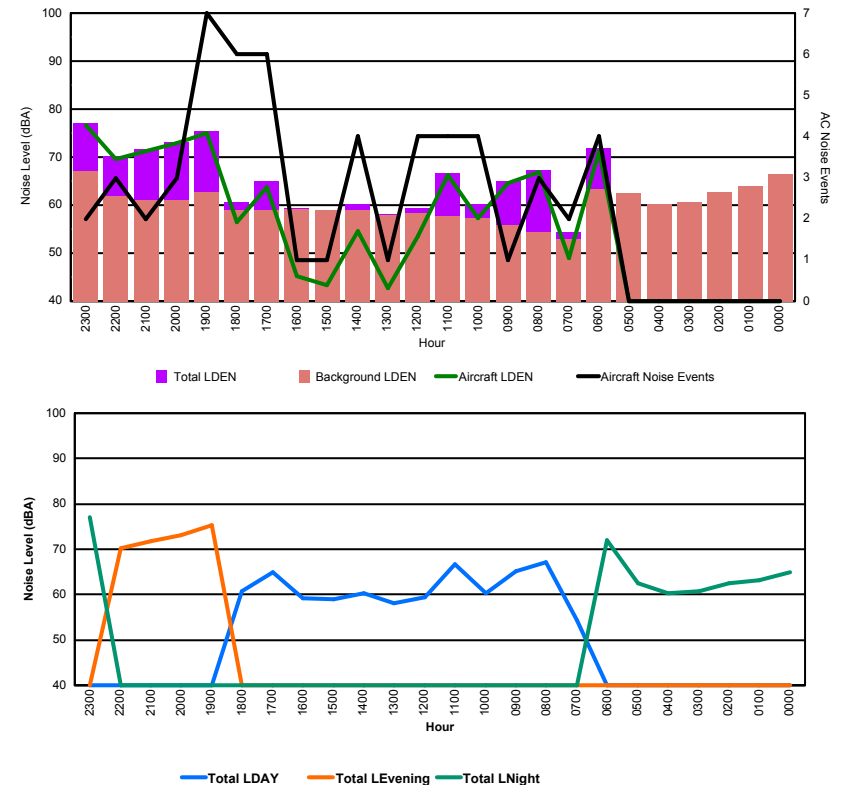


Luxembourg Airport Noise Distribution by Hour

Between 31/01/2016 00:00:00 and 31/01/2016 23:59:59 (Local Time)

Day	Aircraft Events	Total LDEN dB (A)	Aircraft LDEN dB(A)	Background LDEN dB(A)	Total LDay dB(A)	Total LEvening dB(A)	Total LNight dB (A)
31/01/16 0:00	-	64.9	-	66.4	-	-	64.9
31/01/16 1:00	-	63.2	-	64.0	-	-	63.2
31/01/16 2:00	-	62.4	-	62.7	-	-	62.4
31/01/16 3:00	-	60.7	-	60.7	-	-	60.7
31/01/16 4:00	-	60.3	-	60.3	-	-	60.3
31/01/16 5:00	-	62.5	-	62.5	-	-	62.5
31/01/16 6:00	4	71.9	71.3	63.4	-	-	71.9
31/01/16 7:00	2	54.3	48.9	52.9	54.3	-	-
31/01/16 8:00	3	67.2	66.9	54.4	67.2	-	-
31/01/16 9:00	1	65.1	64.5	55.9	65.1	-	-
31/01/16 10:00	4	60.2	57.2	57.3	60.2	-	-
31/01/16 11:00	4	66.7	66.2	57.7	66.7	-	-
31/01/16 12:00	4	59.4	53.5	58.3	59.4	-	-
31/01/16 13:00	1	58.1	42.7	58.0	58.1	-	-
31/01/16 14:00	4	60.2	54.6	59.0	60.2	-	-
31/01/16 15:00	1	59.0	43.4	58.9	59.0	-	-
31/01/16 16:00	1	59.3	45.3	59.2	59.3	-	-
31/01/16 17:00	6	64.9	63.7	59.0	64.9	-	-
31/01/16 18:00	6	60.7	56.4	58.9	60.7	-	-
31/01/16 19:00	7	75.4	75.1	62.7	-	75.4	-
31/01/16 20:00	3	73.2	72.9	61.1	-	73.2	-
31/01/16 21:00	2	71.7	71.3	61.1	-	71.7	-
31/01/16 22:00	3	70.3	69.6	61.8	-	70.3	-
31/01/16 23:00	2	77.0	76.6	67.0	-	-	77.0
	58	68.8	69.2	61.4	62.8	73.1	69.8

Location: NDB-Hamm NMT # 4





Luxembourg Airport Noise Distribution by Hour

Between 31/01/2016 00:00:00 and 31/01/2016 23:59:59 (Local Time)

Day	Aircraft Events	Total LDEN dB (A)	Aircraft LDEN dB(A)	Background LDEN dB(A)	Total LDay dB(A)	Total LEvening dB(A)	Total LNight dB (A)
31/01/16 0:00	-	67.5	-	68.7	-	-	67.5
31/01/16 1:00	-	66.3	-	67.9	-	-	66.3
31/01/16 2:00	-	64.6	-	65.6	-	-	64.6
31/01/16 3:00	-	64.2	-	64.4	-	-	64.2
31/01/16 4:00	-	62.9	-	63.0	-	-	62.9
31/01/16 5:00	-	65.1	-	65.3	-	-	65.1
31/01/16 6:00	4	68.4	65.7	65.5	-	-	68.4
31/01/16 7:00	1	61.5	42.8	61.8	61.5	-	-
31/01/16 8:00	4	60.1	57.7	57.2	60.1	-	-
31/01/16 9:00	1	60.6	55.4	59.0	60.6	-	-
31/01/16 10:00	2	63.1	48.0	63.0	63.1	-	-
31/01/16 11:00	2	61.8	57.9	59.5	61.8	-	-
31/01/16 12:00	1	60.1	51.7	59.5	60.1	-	-
31/01/16 13:00	-	60.0	-	60.0	60.0	-	-
31/01/16 14:00	1	60.1	41.4	60.0	60.1	-	-
31/01/16 15:00	2	60.8	44.4	60.8	60.8	-	-
31/01/16 16:00	1	60.4	42.2	60.4	60.4	-	-
31/01/16 17:00	5	62.4	57.6	60.9	62.4	-	-
31/01/16 18:00	2	60.2	48.1	60.0	60.2	-	-
31/01/16 19:00	5	68.0	65.5	64.5	-	68.0	-
31/01/16 20:00	2	66.1	62.2	63.9	-	66.1	-
31/01/16 21:00	2	68.0	62.2	66.8	-	68.0	-
31/01/16 22:00	3	66.3	61.5	64.9	-	66.3	-
31/01/16 23:00	2	71.1	67.6	68.8	-	-	71.1
	40	65.0	60.8	64.2	61.0	67.2	67.0

