

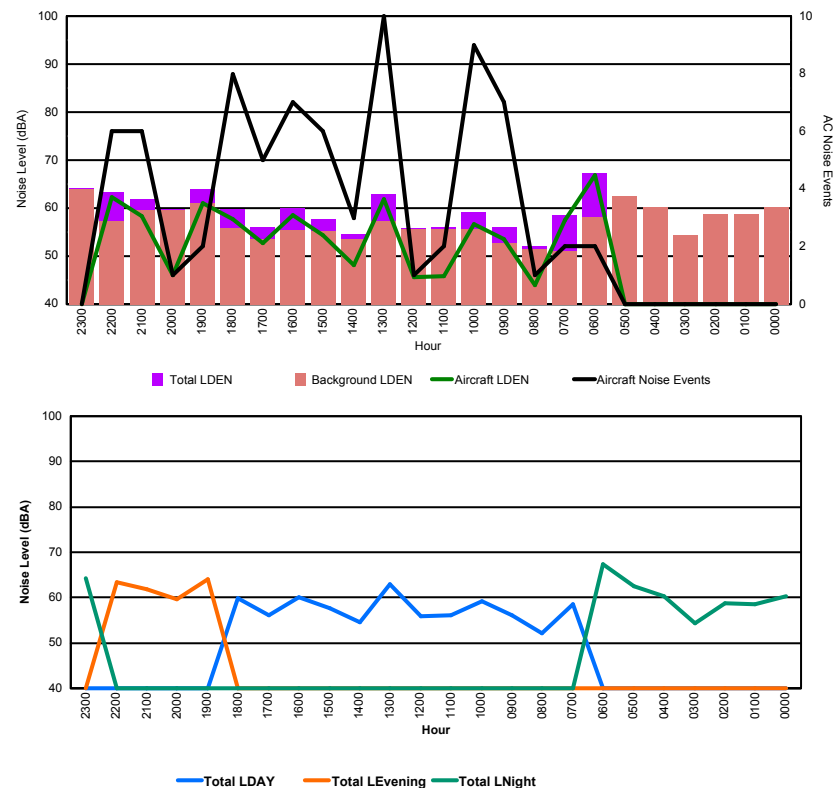


Luxembourg Airport Noise Distribution by Hour

Between 27/01/2016 00:00:00 and 27/01/2016 23:59:59 (Local Time)

Day	Aircraft Events	Total LDEN dB (A)	Aircraft LDEN dB(A)	Background LDEN dB(A)	Total LDay dB(A)	Total LEvening dB(A)	Total LNight dB (A)
27/01/16 0:00	-	60.2	-	60.3	-	-	60.2
27/01/16 1:00	-	58.6	-	58.7	-	-	58.6
27/01/16 2:00	-	58.7	-	58.7	-	-	58.7
27/01/16 3:00	-	54.4	-	54.4	-	-	54.4
27/01/16 4:00	-	60.3	-	60.3	-	-	60.3
27/01/16 5:00	-	62.5	-	62.5	-	-	62.5
27/01/16 6:00	2	67.3	66.8	58.2	-	-	67.3
27/01/16 7:00	2	58.5	57.6	51.1	58.5	-	-
27/01/16 8:00	1	52.1	43.9	51.5	52.1	-	-
27/01/16 9:00	7	56.0	53.5	52.7	56.0	-	-
27/01/16 10:00	9	59.1	56.7	55.6	59.1	-	-
27/01/16 11:00	2	56.0	45.8	55.6	56.0	-	-
27/01/16 12:00	1	55.9	45.7	55.6	55.9	-	-
27/01/16 13:00	10	63.0	61.8	57.3	63.0	-	-
27/01/16 14:00	3	54.5	48.1	53.5	54.5	-	-
27/01/16 15:00	6	57.7	54.4	55.2	57.7	-	-
27/01/16 16:00	7	60.1	58.5	55.4	60.1	-	-
27/01/16 17:00	5	56.1	52.7	53.6	56.1	-	-
27/01/16 18:00	8	59.8	57.7	55.9	59.8	-	-
27/01/16 19:00	2	64.0	61.1	61.1	-	64.0	-
27/01/16 20:00	1	59.7	46.1	59.5	-	59.7	-
27/01/16 21:00	6	61.8	58.3	59.5	-	61.8	-
27/01/16 22:00	6	63.3	62.2	57.2	-	63.3	-
27/01/16 23:00	-	64.2	-	64.0	-	-	64.2
	78	60.8	58.9	58.3	58.3	62.5	62.3

Location: Roodt/Syr NMT # 1



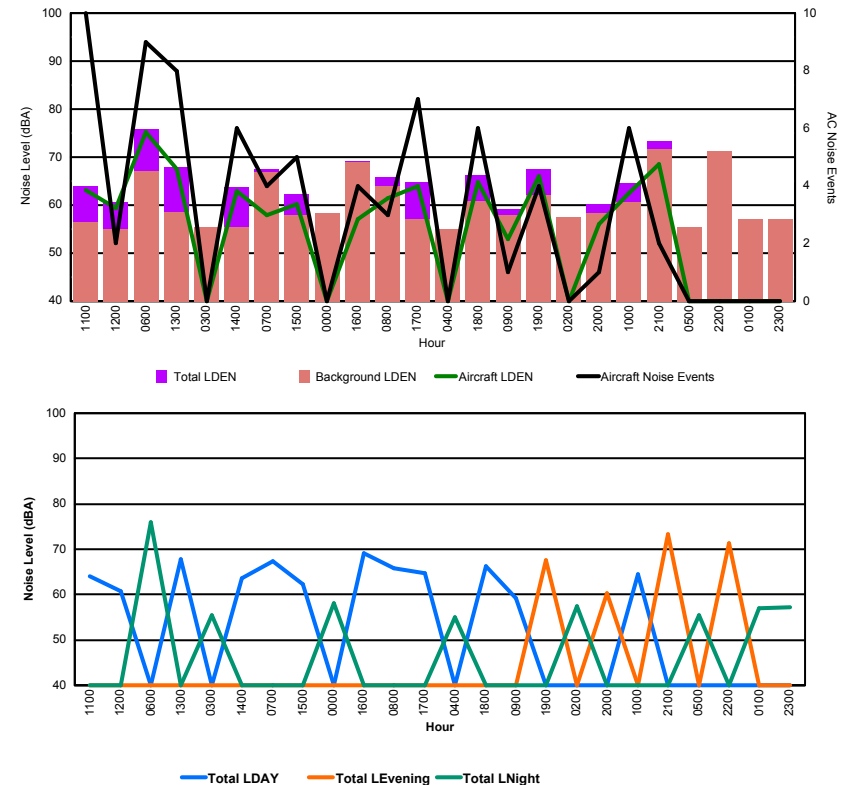


Luxembourg Airport Noise Distribution by Hour

Between 27/01/2016 00:00:00 and 27/01/2016 23:59:59 (Local Time)

Day	Aircraft Events	Total LDEN dB (A)	Aircraft LDEN dB(A)	Background LDEN dB(A)	Total LDay dB(A)	Total LEvening dB(A)	Total LNight dB (A)
27/01/16 0:00	-	58.2	-	58.3	-	-	58.2
27/01/16 1:00	-	57.0	-	57.1	-	-	57.0
27/01/16 2:00	-	57.4	-	57.4	-	-	57.4
27/01/16 3:00	-	55.5	-	55.5	-	-	55.5
27/01/16 4:00	-	55.0	-	55.0	-	-	55.0
27/01/16 5:00	-	55.4	-	55.4	-	-	55.4
27/01/16 6:00	9	75.9	75.3	67.0	-	-	75.9
27/01/16 7:00	4	67.4	57.9	66.9	67.4	-	-
27/01/16 8:00	3	65.9	61.5	63.9	65.9	-	-
27/01/16 9:00	1	59.1	53.0	57.9	59.1	-	-
27/01/16 10:00	6	64.6	62.4	60.6	64.6	-	-
27/01/16 11:00	10	64.0	63.2	56.5	64.0	-	-
27/01/16 12:00	2	60.7	59.4	54.9	60.7	-	-
27/01/16 13:00	8	67.9	67.4	58.6	67.9	-	-
27/01/16 14:00	6	63.7	63.0	55.4	63.7	-	-
27/01/16 15:00	5	62.3	60.3	58.0	62.3	-	-
27/01/16 16:00	4	69.2	57.1	68.9	69.2	-	-
27/01/16 17:00	7	64.7	64.0	57.1	64.7	-	-
27/01/16 18:00	6	66.3	64.8	60.9	66.3	-	-
27/01/16 19:00	4	67.5	66.1	62.0	-	67.5	-
27/01/16 20:00	1	60.3	56.0	58.3	-	60.3	-
27/01/16 21:00	2	73.4	68.6	71.7	-	73.4	-
27/01/16 22:00	-	71.3	-	71.3	-	71.3	-
27/01/16 23:00	-	57.1	-	57.1	-	-	57.1
	78	67.2	66.2	64.0	65.5	70.2	67.2

Location: Mid Runway NMT # 3





Luxembourg Airport Noise Distribution by Hour

Between 27/01/2016 00:00:00 and 27/01/2016 23:59:59 (Local Time)

Day	Aircraft Events	Total LDEN dB (A)	Aircraft LDEN dB(A)	Background LDEN dB(A)	Total LDay dB(A)	Total LEvening dB(A)	Total LNight dB (A)
27/01/16 0:00	-	63.7	-	64.6	-	-	63.7
27/01/16 1:00	-	62.4	-	62.8	-	-	62.4
27/01/16 2:00	-	61.3	-	61.4	-	-	61.3
27/01/16 3:00	-	60.1	-	60.1	-	-	60.1
27/01/16 4:00	-	65.6	-	65.7	-	-	65.6
27/01/16 5:00	-	69.0	-	70.3	-	-	69.0
27/01/16 6:00	6	73.1	69.8	73.1	-	-	73.1
27/01/16 7:00	2	63.9	50.5	66.9	63.9	-	-
27/01/16 8:00	4	65.2	60.6	66.4	65.2	-	-
27/01/16 9:00	1	65.0	42.5	65.7	65.0	-	-
27/01/16 10:00	4	64.1	52.3	64.8	64.1	-	-
27/01/16 11:00	6	66.5	59.2	66.3	66.5	-	-
27/01/16 12:00	1	67.1	52.7	67.4	67.1	-	-
27/01/16 13:00	2	65.4	57.1	65.1	65.4	-	-
27/01/16 14:00	5	64.4	56.8	64.3	64.4	-	-
27/01/16 15:00	5	63.7	55.1	63.9	63.7	-	-
27/01/16 16:00	1	62.7	56.1	61.8	62.7	-	-
27/01/16 17:00	4	64.6	62.0	61.3	64.6	-	-
27/01/16 18:00	4	63.0	58.2	61.5	63.0	-	-
27/01/16 19:00	1	67.7	59.1	67.2	-	67.7	-
27/01/16 20:00	-	65.8	-	65.9	-	65.8	-
27/01/16 21:00	4	68.1	65.1	65.4	-	68.1	-
27/01/16 22:00	1	64.6	60.8	62.3	-	64.6	-
27/01/16 23:00	-	66.1	-	66.1	-	-	66.1
	51	66.1	61.2	66.1	64.8	66.8	67.3

Location: Gare centrale NMT # 5

