

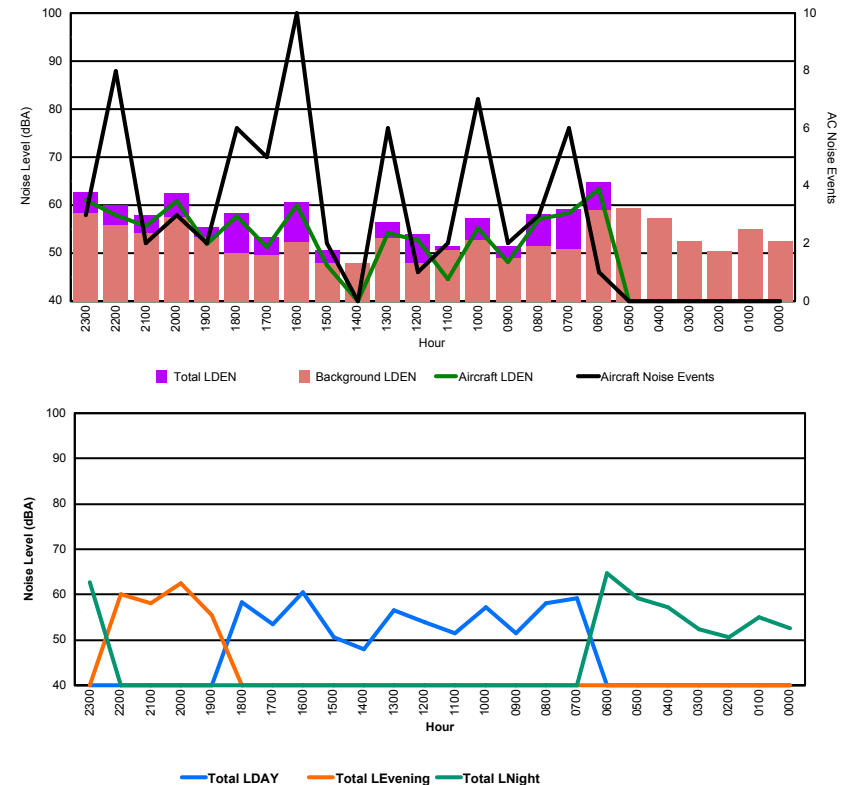


## Luxembourg Airport Noise Distribution by Hour

Between 22/01/2016 00:00:00 and 22/01/2016 23:59:59 (Local Time)

Day	Aircraft Events	Total LDEN dB (A)	Aircraft LDEN dB(A)	Background LDEN dB(A)	Total LDay dB(A)	Total LEvening dB(A)	Total LNight dB (A)
22/01/16 0:00	-	52.6	-	52.6	-	-	52.6
22/01/16 1:00	-	54.9	-	54.9	-	-	54.9
22/01/16 2:00	-	50.5	-	50.5	-	-	50.5
22/01/16 3:00	-	52.3	-	52.4	-	-	52.3
22/01/16 4:00	-	57.2	-	57.2	-	-	57.2
22/01/16 5:00	-	59.3	-	59.4	-	-	59.3
22/01/16 6:00	1	64.7	63.4	59.0	-	-	64.7
22/01/16 7:00	6	59.1	58.4	50.9	59.1	-	-
22/01/16 8:00	3	58.1	57.1	51.4	58.1	-	-
22/01/16 9:00	2	51.5	48.1	48.9	51.5	-	-
22/01/16 10:00	7	57.2	55.3	52.8	57.2	-	-
22/01/16 11:00	2	51.5	44.6	50.6	51.5	-	-
22/01/16 12:00	1	54.0	52.8	47.9	54.0	-	-
22/01/16 13:00	6	56.5	54.1	53.1	56.5	-	-
22/01/16 14:00	-	48.0	-	48.0	48.0	-	-
22/01/16 15:00	2	50.7	47.4	48.0	50.7	-	-
22/01/16 16:00	10	60.6	60.0	52.3	60.6	-	-
22/01/16 17:00	5	53.4	51.2	49.5	53.4	-	-
22/01/16 18:00	6	58.3	57.7	49.9	58.3	-	-
22/01/16 19:00	2	55.5	51.8	53.3	-	55.5	-
22/01/16 20:00	3	62.4	60.8	57.5	-	62.4	-
22/01/16 21:00	2	58.0	55.7	54.1	-	58.0	-
22/01/16 22:00	8	60.0	58.0	55.8	-	60.0	-
22/01/16 23:00	3	62.8	61.0	58.4	-	-	62.8
	<b>69</b>	<b>58.2</b>	<b>57.5</b>	<b>54.3</b>	<b>56.4</b>	<b>59.7</b>	<b>59.4</b>

Location: Roodt/Syr NMT # 1

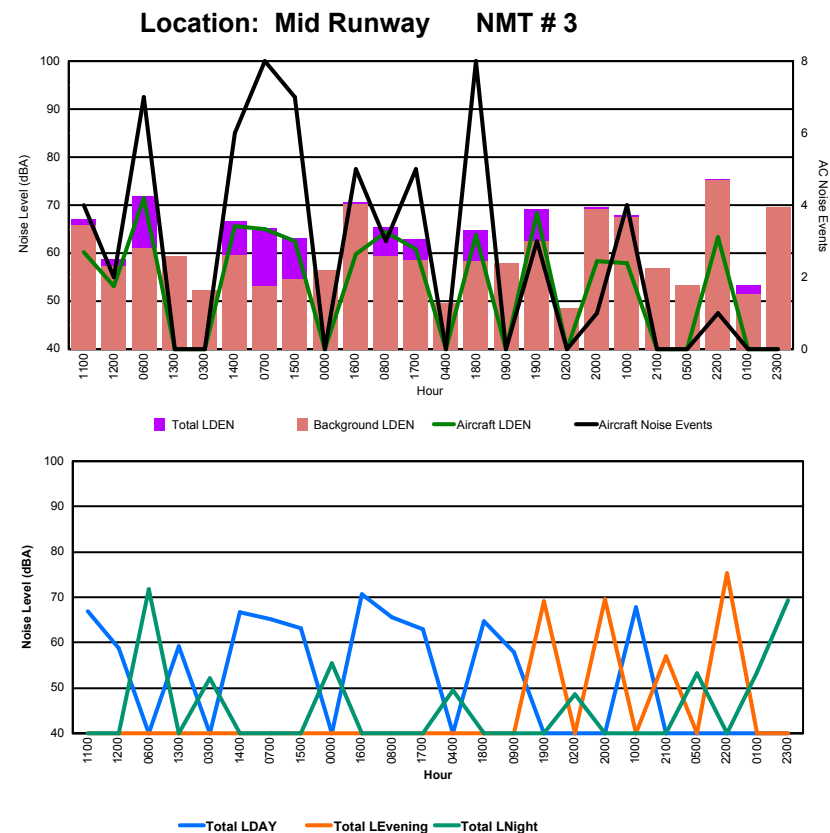




## Luxembourg Airport Noise Distribution by Hour

Between 22/01/2016 00:00:00 and 22/01/2016 23:59:59 (Local Time)

Day	Aircraft Events	Total LDEN dB (A)	Aircraft LDEN dB(A)	Background LDEN dB(A)	Total LDay dB(A)	Total LEvening dB(A)	Total LNight dB (A)
22/01/16 0:00	-	55.5	-	56.4	-	-	55.5
22/01/16 1:00	-	53.4	-	51.4	-	-	53.4
22/01/16 2:00	-	48.6	-	48.6	-	-	48.6
22/01/16 3:00	-	52.1	-	52.2	-	-	52.1
22/01/16 4:00	-	49.5	-	49.5	-	-	49.5
22/01/16 5:00	-	53.3	-	53.3	-	-	53.3
22/01/16 6:00	7	71.8	71.4	61.1	-	-	71.8
22/01/16 7:00	8	65.2	65.0	53.1	65.2	-	-
22/01/16 8:00	3	65.5	64.3	59.4	65.5	-	-
22/01/16 9:00	-	57.9	-	58.0	57.9	-	-
22/01/16 10:00	4	67.9	58.0	67.5	67.9	-	-
22/01/16 11:00	4	67.0	60.3	65.9	67.0	-	-
22/01/16 12:00	2	58.7	53.2	57.2	58.7	-	-
22/01/16 13:00	-	59.3	-	59.4	59.3	-	-
22/01/16 14:00	6	66.6	65.6	59.5	66.6	-	-
22/01/16 15:00	7	63.1	62.5	54.6	63.1	-	-
22/01/16 16:00	5	70.6	59.7	70.3	70.6	-	-
22/01/16 17:00	5	62.9	60.9	58.6	62.9	-	-
22/01/16 18:00	8	64.8	63.8	58.4	64.8	-	-
22/01/16 19:00	3	69.2	68.3	62.4	-	69.2	-
22/01/16 20:00	1	69.5	58.3	69.1	-	69.5	-
22/01/16 21:00	-	56.9	-	56.9	-	56.9	-
22/01/16 22:00	1	75.4	63.3	75.2	-	75.4	-
22/01/16 23:00	-	69.4	-	69.5	-	-	69.4
	<b>64</b>	<b>67.0</b>	<b>64.7</b>	<b>65.3</b>	<b>65.6</b>	<b>71.2</b>	<b>64.9</b>



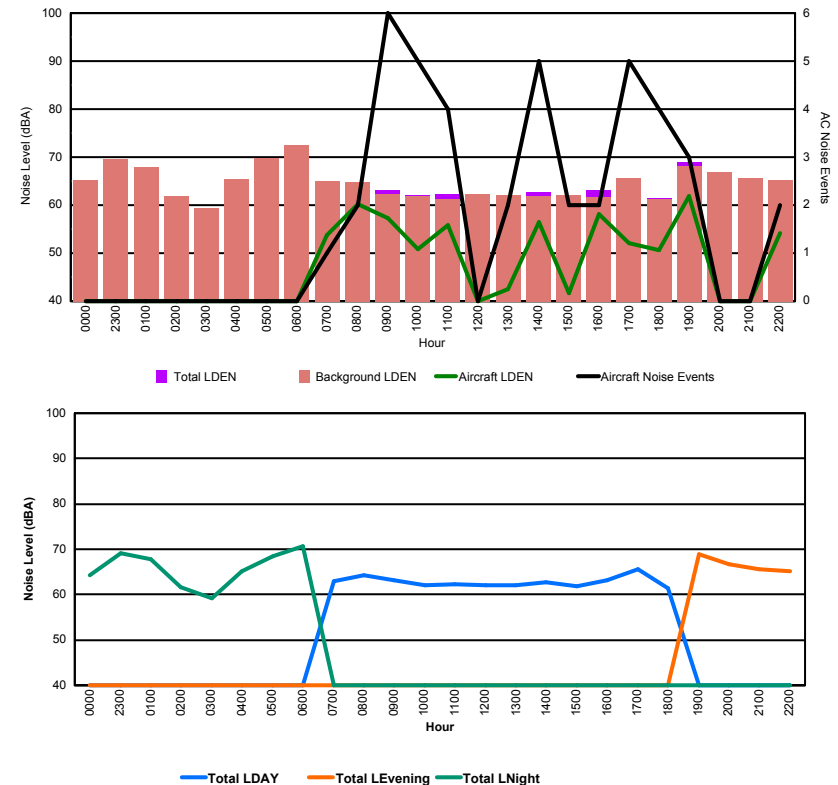


## Luxembourg Airport Noise Distribution by Hour

Between 22/01/2016 00:00:00 and 22/01/2016 23:59:59 (Local Time)

Day	Aircraft Events	Total LDEN dB (A)	Aircraft LDEN dB(A)	Background LDEN dB(A)	Total LDay dB(A)	Total LEvening dB(A)	Total LNight dB (A)
22/01/16 0:00	-	64.3	-	65.2	-	-	64.3
22/01/16 1:00	-	67.8	-	67.9	-	-	67.8
22/01/16 2:00	-	61.7	-	61.8	-	-	61.7
22/01/16 3:00	-	59.3	-	59.3	-	-	59.3
22/01/16 4:00	-	65.2	-	65.4	-	-	65.2
22/01/16 5:00	-	68.4	-	69.7	-	-	68.4
22/01/16 6:00	-	70.7	-	72.5	-	-	70.7
22/01/16 7:00	1	62.9	53.8	65.0	62.9	-	-
22/01/16 8:00	2	64.2	60.2	64.8	64.2	-	-
22/01/16 9:00	6	63.1	57.2	62.2	63.1	-	-
22/01/16 10:00	5	62.0	50.8	61.9	62.0	-	-
22/01/16 11:00	4	62.2	55.9	61.3	62.2	-	-
22/01/16 12:00	-	62.1	-	62.2	62.1	-	-
22/01/16 13:00	2	62.0	42.6	62.1	62.0	-	-
22/01/16 14:00	5	62.7	56.4	61.8	62.7	-	-
22/01/16 15:00	2	61.9	41.6	62.0	61.9	-	-
22/01/16 16:00	2	63.2	58.2	61.6	63.2	-	-
22/01/16 17:00	5	65.6	52.0	65.6	65.6	-	-
22/01/16 18:00	4	61.5	50.6	61.3	61.5	-	-
22/01/16 19:00	3	69.0	61.9	68.2	-	69.0	-
22/01/16 20:00	-	66.8	-	66.8	-	66.8	-
22/01/16 21:00	-	65.6	-	65.7	-	65.6	-
22/01/16 22:00	2	65.2	54.1	65.3	-	65.2	-
22/01/16 23:00	-	69.2	-	69.5	-	-	69.2
	<b>43</b>	<b>65.5</b>	<b>56.3</b>	<b>65.9</b>	<b>62.9</b>	<b>66.9</b>	<b>67.1</b>

Location: Gare centrale NMT # 5



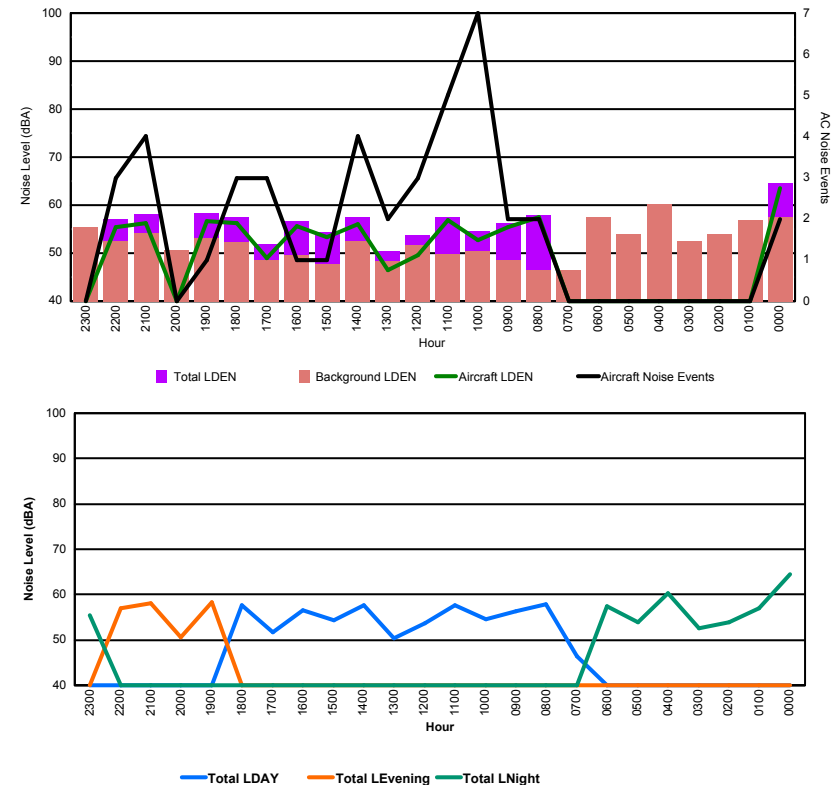


## Luxembourg Airport Noise Distribution by Hour

Between 23/01/2016 00:00:00 and 23/01/2016 23:59:59 (Local Time)

Day	Aircraft Events	Total LDEN dB (A)	Aircraft LDEN dB(A)	Background LDEN dB(A)	Total LDay dB(A)	Total LEvening dB(A)	Total LNight dB (A)
23/01/16 0:00	2	64.6	63.6	57.6	-	-	64.6
23/01/16 1:00	-	56.9	-	56.9	-	-	56.9
23/01/16 2:00	-	54.0	-	54.0	-	-	54.0
23/01/16 3:00	-	52.6	-	52.6	-	-	52.6
23/01/16 4:00	-	60.2	-	60.2	-	-	60.2
23/01/16 5:00	-	53.9	-	54.0	-	-	53.9
23/01/16 6:00	-	57.5	-	57.5	-	-	57.5
23/01/16 7:00	-	46.4	-	46.4	46.4	-	-
23/01/16 8:00	2	57.9	57.6	46.5	57.9	-	-
23/01/16 9:00	2	56.3	55.5	48.6	56.3	-	-
23/01/16 10:00	7	54.6	52.8	50.4	54.6	-	-
23/01/16 11:00	5	57.6	56.8	49.8	57.6	-	-
23/01/16 12:00	3	53.7	49.6	51.7	53.7	-	-
23/01/16 13:00	2	50.4	46.4	48.3	50.4	-	-
23/01/16 14:00	4	57.6	56.1	52.4	57.6	-	-
23/01/16 15:00	1	54.3	53.3	47.8	54.3	-	-
23/01/16 16:00	1	56.6	55.6	49.6	56.6	-	-
23/01/16 17:00	3	51.8	49.0	48.6	51.8	-	-
23/01/16 18:00	3	57.6	56.2	52.3	57.6	-	-
23/01/16 19:00	1	58.3	56.7	53.1	-	58.3	-
23/01/16 20:00	-	50.6	-	50.6	-	50.6	-
23/01/16 21:00	4	58.2	56.2	54.2	-	58.2	-
23/01/16 22:00	3	57.0	55.4	52.4	-	57.0	-
23/01/16 23:00	-	55.5	-	55.5	-	-	55.5
	<b>43</b>	<b>57.1</b>	<b>56.5</b>	<b>53.7</b>	<b>55.6</b>	<b>56.9</b>	<b>58.8</b>

Location: Roodt/Syr NMT # 1



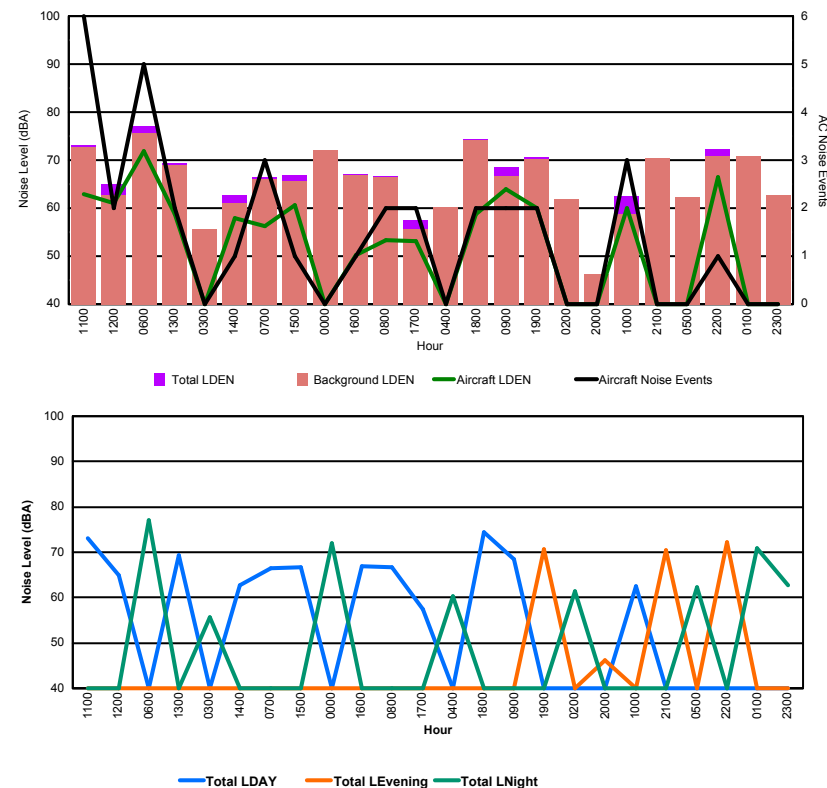


## Luxembourg Airport Noise Distribution by Hour

Between 23/01/2016 00:00:00 and 23/01/2016 23:59:59 (Local Time)

Day	Aircraft Events	Total LDEN dB (A)	Aircraft LDEN dB(A)	Background LDEN dB(A)	Total LDay dB(A)	Total LEvening dB(A)	Total LNight dB (A)
23/01/16 0:00	-	72.0	-	72.0	-	-	72.0
23/01/16 1:00	-	70.8	-	70.9	-	-	70.8
23/01/16 2:00	-	61.4	-	61.8	-	-	61.4
23/01/16 3:00	-	55.6	-	55.6	-	-	55.6
23/01/16 4:00	-	60.3	-	60.3	-	-	60.3
23/01/16 5:00	-	62.2	-	62.3	-	-	62.2
23/01/16 6:00	5	77.1	71.9	75.6	-	-	77.1
23/01/16 7:00	3	66.5	56.3	66.1	66.5	-	-
23/01/16 8:00	2	66.6	53.3	66.4	66.6	-	-
23/01/16 9:00	2	68.5	63.9	66.7	68.5	-	-
23/01/16 10:00	3	62.4	59.9	58.8	62.4	-	-
23/01/16 11:00	6	73.2	62.9	72.8	73.2	-	-
23/01/16 12:00	2	64.9	61.0	62.7	64.9	-	-
23/01/16 13:00	2	69.4	58.8	68.9	69.4	-	-
23/01/16 14:00	1	62.7	58.0	61.0	62.7	-	-
23/01/16 15:00	1	66.8	60.7	65.6	66.8	-	-
23/01/16 16:00	1	67.0	50.3	66.9	67.0	-	-
23/01/16 17:00	2	57.5	53.1	55.6	57.5	-	-
23/01/16 18:00	2	74.4	58.7	74.2	74.4	-	-
23/01/16 19:00	2	70.7	60.0	70.3	-	70.7	-
23/01/16 20:00	-	46.2	-	46.2	-	46.2	-
23/01/16 21:00	-	70.5	-	70.5	-	70.5	-
23/01/16 22:00	1	72.3	66.5	70.9	-	72.3	-
23/01/16 23:00	-	62.8	-	62.8	-	-	62.8
	<b>35</b>	<b>69.5</b>	<b>63.3</b>	<b>68.9</b>	<b>68.8</b>	<b>70.0</b>	<b>70.3</b>

Location: Mid Runway NMT # 3



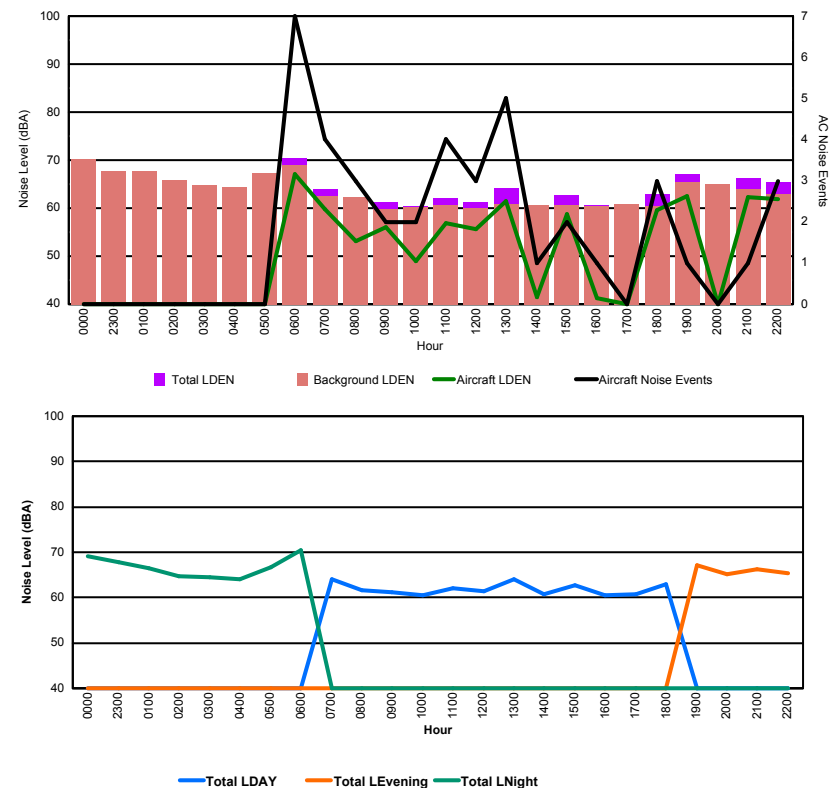


## Luxembourg Airport Noise Distribution by Hour

Between 23/01/2016 00:00:00 and 23/01/2016 23:59:59 (Local Time)

Day	Aircraft Events	Total LDEN dB (A)	Aircraft LDEN dB(A)	Background LDEN dB(A)	Total LDay dB(A)	Total LEvening dB(A)	Total LNight dB (A)
23/01/16 0:00	-	69.2	-	70.2	-	-	69.2
23/01/16 1:00	-	66.5	-	67.8	-	-	66.5
23/01/16 2:00	-	64.8	-	65.8	-	-	64.8
23/01/16 3:00	-	64.6	-	64.8	-	-	64.6
23/01/16 4:00	-	64.1	-	64.3	-	-	64.1
23/01/16 5:00	-	66.7	-	67.3	-	-	66.7
23/01/16 6:00	7	70.4	67.1	68.9	-	-	70.4
23/01/16 7:00	4	64.0	59.8	62.4	64.0	-	-
23/01/16 8:00	3	61.7	53.1	62.2	61.7	-	-
23/01/16 9:00	2	61.2	56.0	59.7	61.2	-	-
23/01/16 10:00	2	60.5	49.0	60.3	60.5	-	-
23/01/16 11:00	4	62.1	56.8	60.7	62.1	-	-
23/01/16 12:00	3	61.3	55.7	60.1	61.3	-	-
23/01/16 13:00	5	64.1	61.4	60.9	64.1	-	-
23/01/16 14:00	1	60.7	41.4	60.7	60.7	-	-
23/01/16 15:00	2	62.8	58.7	60.7	62.8	-	-
23/01/16 16:00	1	60.6	41.2	60.5	60.6	-	-
23/01/16 17:00	-	60.7	-	60.8	60.7	-	-
23/01/16 18:00	3	63.0	59.6	60.5	63.0	-	-
23/01/16 19:00	1	67.1	62.4	65.4	-	67.1	-
23/01/16 20:00	-	65.1	-	65.1	-	65.1	-
23/01/16 21:00	1	66.2	62.3	64.0	-	66.2	-
23/01/16 22:00	3	65.4	61.9	63.0	-	65.4	-
23/01/16 23:00	-	67.7	-	67.7	-	-	67.7
	<b>42</b>	<b>65.1</b>	<b>60.2</b>	<b>64.7</b>	<b>62.1</b>	<b>66.0</b>	<b>67.3</b>

Location: Gare centrale NMT # 5



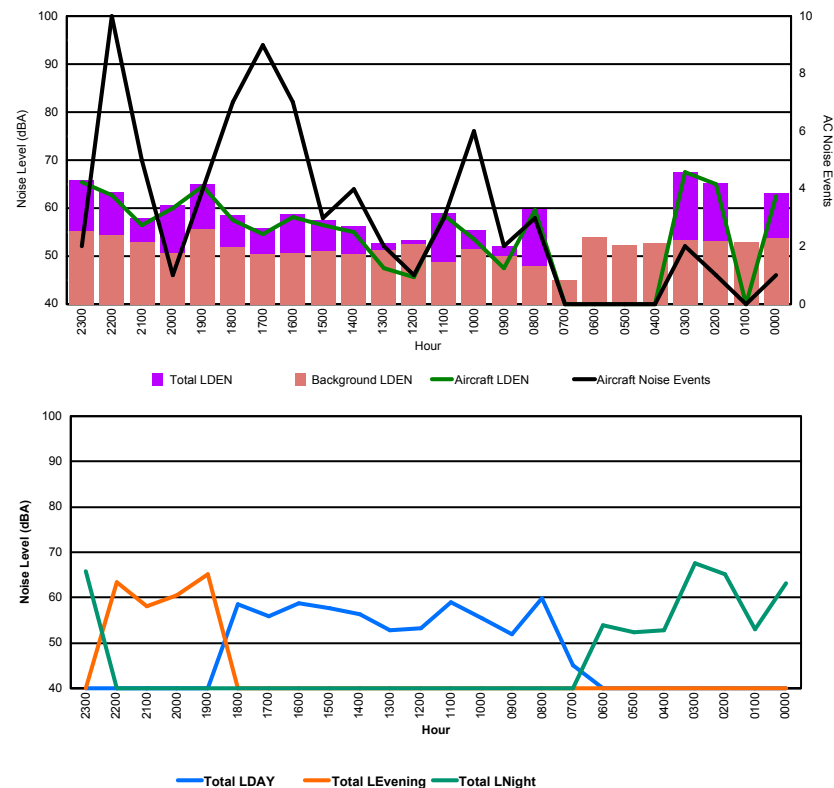


## Luxembourg Airport Noise Distribution by Hour

Between 24/01/2016 00:00:00 and 24/01/2016 23:59:59 (Local Time)

Day	Aircraft Events	Total LDEN dB (A)	Aircraft LDEN dB(A)	Background LDEN dB(A)	Total LDay dB(A)	Total LEvening dB(A)	Total LNight dB (A)
24/01/16 0:00	1	63.2	62.6	53.7	-	-	63.2
24/01/16 1:00	-	53.0	-	53.0	-	-	53.0
24/01/16 2:00	1	65.2	64.9	53.2	-	-	65.2
24/01/16 3:00	2	67.6	67.5	53.3	-	-	67.6
24/01/16 4:00	-	52.7	-	52.7	-	-	52.7
24/01/16 5:00	-	52.3	-	52.3	-	-	52.3
24/01/16 6:00	-	54.0	-	54.0	-	-	54.0
24/01/16 7:00	-	45.1	-	45.1	45.1	-	-
24/01/16 8:00	3	59.8	59.5	47.9	59.8	-	-
24/01/16 9:00	2	52.0	47.6	50.1	52.0	-	-
24/01/16 10:00	6	55.5	53.5	51.4	55.5	-	-
24/01/16 11:00	3	58.9	58.5	48.7	58.9	-	-
24/01/16 12:00	1	53.3	45.6	52.5	53.3	-	-
24/01/16 13:00	2	52.7	47.5	51.3	52.7	-	-
24/01/16 14:00	4	56.3	55.0	50.5	56.3	-	-
24/01/16 15:00	3	57.6	56.5	51.1	57.6	-	-
24/01/16 16:00	7	58.8	58.1	50.6	58.8	-	-
24/01/16 17:00	9	55.8	54.5	50.5	55.8	-	-
24/01/16 18:00	7	58.5	57.5	51.9	58.5	-	-
24/01/16 19:00	4	65.1	64.6	55.7	-	65.1	-
24/01/16 20:00	1	60.6	60.0	50.7	-	60.6	-
24/01/16 21:00	5	58.0	56.5	52.9	-	58.0	-
24/01/16 22:00	10	63.4	62.8	54.4	-	63.4	-
24/01/16 23:00	2	65.9	65.5	55.3	-	-	65.9
	<b>73</b>	<b>60.8</b>	<b>61.1</b>	<b>52.3</b>	<b>56.6</b>	<b>62.6</b>	<b>63.0</b>

Location: Roodt/Syr NMT # 1

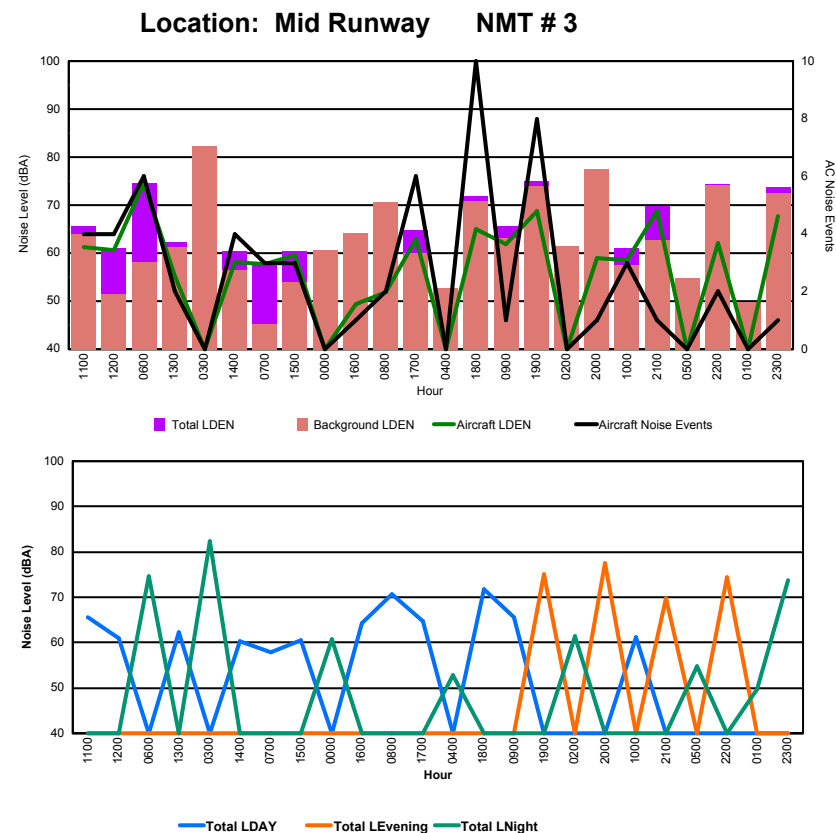




## Luxembourg Airport Noise Distribution by Hour

Between 24/01/2016 00:00:00 and 24/01/2016 23:59:59 (Local Time)

Day	Aircraft Events	Total LDEN dB (A)	Aircraft LDEN dB(A)	Background LDEN dB(A)	Total LDay dB(A)	Total LEvening dB(A)	Total LNight dB (A)
24/01/16 0:00	-	60.7	-	60.7	-	-	60.7
24/01/16 1:00	-	49.7	-	49.8	-	-	49.7
24/01/16 2:00	-	61.5	-	61.4	-	-	61.5
24/01/16 3:00	-	82.3	-	82.3	-	-	82.3
24/01/16 4:00	-	52.8	-	52.8	-	-	52.8
24/01/16 5:00	-	54.8	-	54.8	-	-	54.8
24/01/16 6:00	6	74.6	74.5	58.2	-	-	74.6
24/01/16 7:00	3	57.9	57.7	45.3	57.9	-	-
24/01/16 8:00	2	70.7	51.9	70.7	70.7	-	-
24/01/16 9:00	1	65.7	61.9	63.2	65.7	-	-
24/01/16 10:00	3	61.1	58.6	57.6	61.1	-	-
24/01/16 11:00	4	65.7	61.3	63.9	65.7	-	-
24/01/16 12:00	4	61.0	60.6	51.4	61.0	-	-
24/01/16 13:00	2	62.2	55.2	61.3	62.2	-	-
24/01/16 14:00	4	60.4	58.2	56.5	60.4	-	-
24/01/16 15:00	3	60.5	59.5	53.9	60.5	-	-
24/01/16 16:00	1	64.2	49.4	64.1	64.2	-	-
24/01/16 17:00	6	64.7	63.0	59.9	64.7	-	-
24/01/16 18:00	10	71.8	65.0	70.8	71.8	-	-
24/01/16 19:00	8	75.1	68.7	74.0	-	75.1	-
24/01/16 20:00	1	77.5	59.0	77.4	-	77.5	-
24/01/16 21:00	1	69.7	68.7	62.7	-	69.7	-
24/01/16 22:00	2	74.4	62.1	74.2	-	74.4	-
24/01/16 23:00	1	73.8	67.8	72.5	-	-	73.8
	<b>62</b>	<b>72.2</b>	<b>65.5</b>	<b>71.4</b>	<b>65.9</b>	<b>75.0</b>	<b>74.5</b>







## Luxembourg Airport Noise Distribution by Hour

Between 24/01/2016 00:00:00 and 24/01/2016 23:59:59 (Local Time)

Day	Aircraft Events	Total LDEN dB (A)	Aircraft LDEN dB(A)	Background LDEN dB(A)	Total LDay dB(A)	Total LEvening dB(A)	Total LNight dB (A)
24/01/16 0:00	-	66.9	-	68.3	-	-	66.9
24/01/16 1:00	-	65.6	-	66.9	-	-	65.6
24/01/16 2:00	-	64.2	-	65.1	-	-	64.2
24/01/16 3:00	-	64.1	-	64.2	-	-	64.1
24/01/16 4:00	-	63.7	-	63.8	-	-	63.7
24/01/16 5:00	-	64.4	-	64.6	-	-	64.4
24/01/16 6:00	4	69.5	66.3	67.3	-	-	69.5
24/01/16 7:00	3	61.3	42.4	60.5	61.3	-	-
24/01/16 8:00	2	61.6	54.9	62.2	61.6	-	-
24/01/16 9:00	2	60.8	57.4	58.2	60.8	-	-
24/01/16 10:00	1	58.8	45.8	58.6	58.8	-	-
24/01/16 11:00	3	61.4	57.9	59.0	61.4	-	-
24/01/16 12:00	1	59.3	48.0	59.0	59.3	-	-
24/01/16 13:00	1	59.6	53.7	58.3	59.6	-	-
24/01/16 14:00	1	58.9	42.0	58.9	58.9	-	-
24/01/16 15:00	1	60.1	51.0	59.6	60.1	-	-
24/01/16 16:00	1	60.7	37.9	60.7	60.7	-	-
24/01/16 17:00	4	61.6	55.0	60.7	61.6	-	-
24/01/16 18:00	4	63.2	55.2	62.5	63.2	-	-
24/01/16 19:00	3	66.4	62.9	64.0	-	66.4	-
24/01/16 20:00	3	66.7	64.2	63.2	-	66.7	-
24/01/16 21:00	1	64.8	60.7	62.7	-	64.8	-
24/01/16 22:00	2	65.3	62.7	61.9	-	65.3	-
24/01/16 23:00	2	69.7	67.1	66.4	-	-	69.7
	<b>39</b>	<b>64.5</b>	<b>60.4</b>	<b>63.4</b>	<b>60.8</b>	<b>65.9</b>	<b>66.7</b>

Location: Gare centrale NMT # 5

