

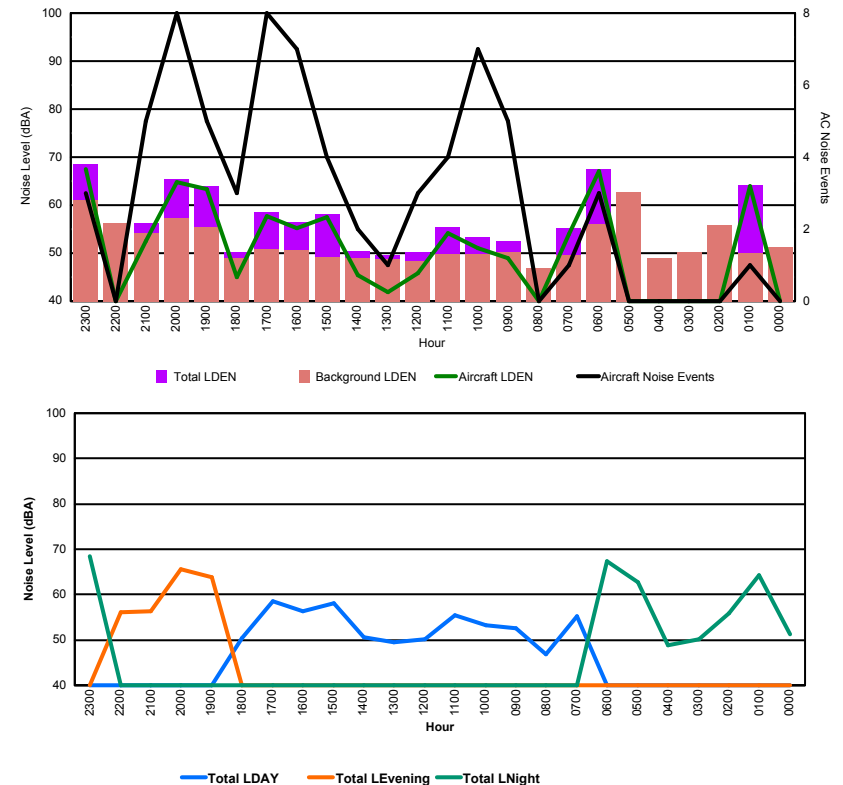


## Luxembourg Airport Noise Distribution by Hour

Between 21/01/2016 00:00:00 and 21/01/2016 23:59:59 (Local Time)

Day	Aircraft Events	Total LDEN dB (A)	Aircraft LDEN dB(A)	Background LDEN dB(A)	Total LDay dB(A)	Total LEvening dB(A)	Total LNight dB (A)
21/01/16 0:00	-	51.2	-	51.2	-	-	51.2
21/01/16 1:00	1	64.2	64.0	49.9	-	-	64.2
21/01/16 2:00	-	55.8	-	55.8	-	-	55.8
21/01/16 3:00	-	50.2	-	50.3	-	-	50.2
21/01/16 4:00	-	48.9	-	48.9	-	-	48.9
21/01/16 5:00	-	62.8	-	62.8	-	-	62.8
21/01/16 6:00	3	67.4	67.1	56.0	-	-	67.4
21/01/16 7:00	1	55.3	53.9	49.5	55.3	-	-
21/01/16 8:00	-	46.9	-	46.9	46.9	-	-
21/01/16 9:00	5	52.5	49.0	50.2	52.5	-	-
21/01/16 10:00	7	53.3	51.0	49.7	53.3	-	-
21/01/16 11:00	4	55.5	54.2	49.7	55.5	-	-
21/01/16 12:00	3	50.2	45.8	48.4	50.2	-	-
21/01/16 13:00	1	49.5	41.8	48.8	49.5	-	-
21/01/16 14:00	2	50.5	45.5	48.9	50.5	-	-
21/01/16 15:00	4	58.1	57.5	49.2	58.1	-	-
21/01/16 16:00	7	56.4	55.2	50.6	56.4	-	-
21/01/16 17:00	8	58.5	57.8	50.8	58.5	-	-
21/01/16 18:00	3	50.3	45.0	48.9	50.3	-	-
21/01/16 19:00	5	63.9	63.3	55.4	-	63.9	-
21/01/16 20:00	8	65.5	64.8	57.3	-	65.5	-
21/01/16 21:00	5	56.3	52.6	54.1	-	56.3	-
21/01/16 22:00	-	56.1	-	56.2	-	56.1	-
21/01/16 23:00	3	68.5	67.6	61.0	-	-	68.5
	<b>70</b>	<b>60.7</b>	<b>60.9</b>	<b>54.6</b>	<b>54.4</b>	<b>62.3</b>	<b>63.5</b>

Location: Roodt/Syr NMT # 1



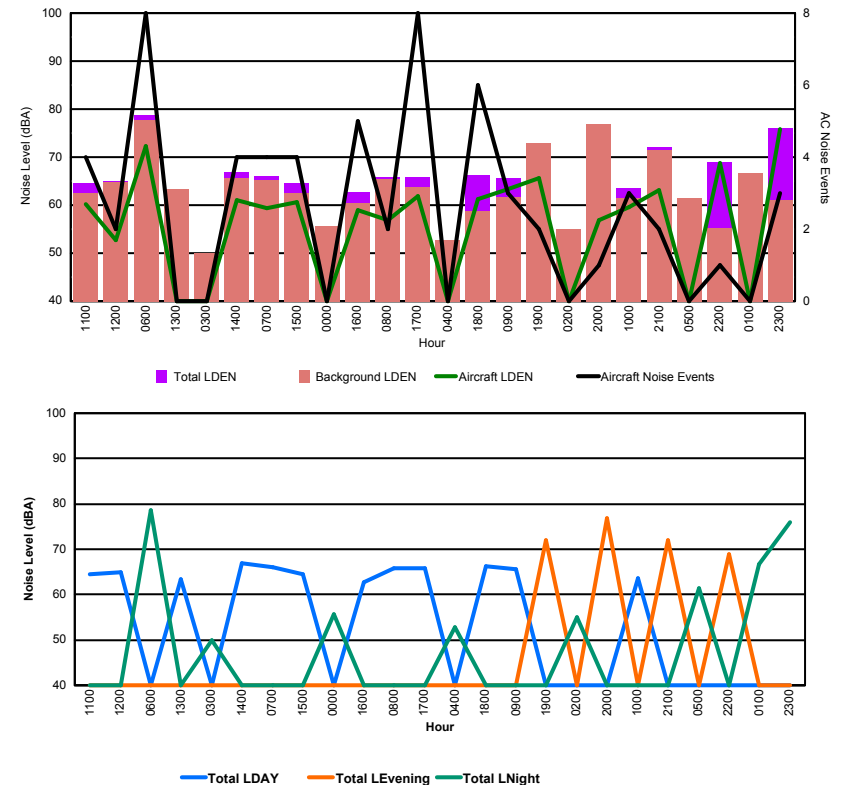


## Luxembourg Airport Noise Distribution by Hour

Between 21/01/2016 00:00:00 and 21/01/2016 23:59:59 (Local Time)

Day	Aircraft Events	Total LDEN dB (A)	Aircraft LDEN dB(A)	Background LDEN dB(A)	Total LDay dB(A)	Total LEvening dB(A)	Total LNight dB (A)
21/01/16 0:00	-	55.6	-	55.6	-	-	55.6
21/01/16 1:00	-	66.7	-	66.7	-	-	66.7
21/01/16 2:00	-	55.0	-	55.1	-	-	55.0
21/01/16 3:00	-	49.9	-	49.9	-	-	49.9
21/01/16 4:00	-	52.8	-	52.8	-	-	52.8
21/01/16 5:00	-	61.5	-	61.5	-	-	61.5
21/01/16 6:00	8	78.7	72.2	77.8	-	-	78.7
21/01/16 7:00	4	66.1	59.3	65.2	66.1	-	-
21/01/16 8:00	2	65.9	56.8	65.4	65.9	-	-
21/01/16 9:00	3	65.6	63.3	61.7	65.6	-	-
21/01/16 10:00	3	63.6	59.6	61.5	63.6	-	-
21/01/16 11:00	4	64.5	60.3	62.4	64.5	-	-
21/01/16 12:00	2	64.9	52.7	64.7	64.9	-	-
21/01/16 13:00	-	63.3	-	63.3	63.3	-	-
21/01/16 14:00	4	66.9	61.1	65.6	66.9	-	-
21/01/16 15:00	4	64.5	60.6	62.4	64.5	-	-
21/01/16 16:00	5	62.7	58.9	60.5	62.7	-	-
21/01/16 17:00	8	65.8	61.8	63.7	65.8	-	-
21/01/16 18:00	6	66.2	61.2	58.7	66.2	-	-
21/01/16 19:00	2	72.1	65.6	72.9	-	72.1	-
21/01/16 20:00	1	76.8	56.8	76.8	-	76.8	-
21/01/16 21:00	2	72.1	63.1	71.5	-	72.1	-
21/01/16 22:00	1	68.9	68.7	55.3	-	68.9	-
21/01/16 23:00	3	76.0	75.9	61.0	-	-	76.0
	<b>62</b>	<b>70.2</b>	<b>66.8</b>	<b>68.7</b>	<b>65.2</b>	<b>73.4</b>	<b>71.8</b>

Location: Mid Runway NMT # 3





## Luxembourg Airport Noise Distribution by Hour

Between 21/01/2016 00:00:00 and 21/01/2016 23:59:59 (Local Time)

Day	Aircraft Events	Total LDEN dB (A)	Aircraft LDEN dB(A)	Background LDEN dB(A)	Total LDay dB(A)	Total LEvening dB(A)	Total LNight dB (A)
21/01/16 0:00	-	63.5	-	64.2	-	-	63.5
21/01/16 1:00	-	60.0	-	60.1	-	-	60.0
21/01/16 2:00	-	58.9	-	59.0	-	-	58.9
21/01/16 3:00	-	60.1	-	60.1	-	-	60.1
21/01/16 4:00	-	65.3	-	65.4	-	-	65.3
21/01/16 5:00	-	68.2	-	69.3	-	-	68.2
21/01/16 6:00	4	69.9	61.7	71.0	-	-	69.9
21/01/16 7:00	2	61.7	47.7	63.3	61.7	-	-
21/01/16 8:00	4	62.8	59.1	62.5	62.8	-	-
21/01/16 9:00	3	64.1	58.7	62.8	64.1	-	-
21/01/16 10:00	5	62.3	50.3	62.3	62.3	-	-
21/01/16 11:00	4	63.2	54.3	62.9	63.2	-	-
21/01/16 12:00	4	61.3	50.6	61.0	61.3	-	-
21/01/16 13:00	1	62.3	56.1	61.2	62.3	-	-
21/01/16 14:00	4	63.0	58.4	61.3	63.0	-	-
21/01/16 15:00	2	60.8	47.9	60.7	60.8	-	-
21/01/16 16:00	1	61.3	50.6	61.1	61.3	-	-
21/01/16 17:00	3	61.3	53.9	60.5	61.3	-	-
21/01/16 18:00	7	61.8	54.6	61.0	61.8	-	-
21/01/16 19:00	5	69.1	65.2	66.8	-	69.1	-
21/01/16 20:00	3	66.9	61.8	65.6	-	66.9	-
21/01/16 21:00	6	67.4	64.9	64.0	-	67.4	-
21/01/16 22:00	6	64.9	61.1	62.8	-	64.9	-
21/01/16 23:00	-	67.0	-	67.0	-	-	67.0
	<b>64</b>	<b>64.7</b>	<b>59.3</b>	<b>64.4</b>	<b>62.3</b>	<b>67.3</b>	<b>65.7</b>

Location: Gare centrale NMT # 5

