

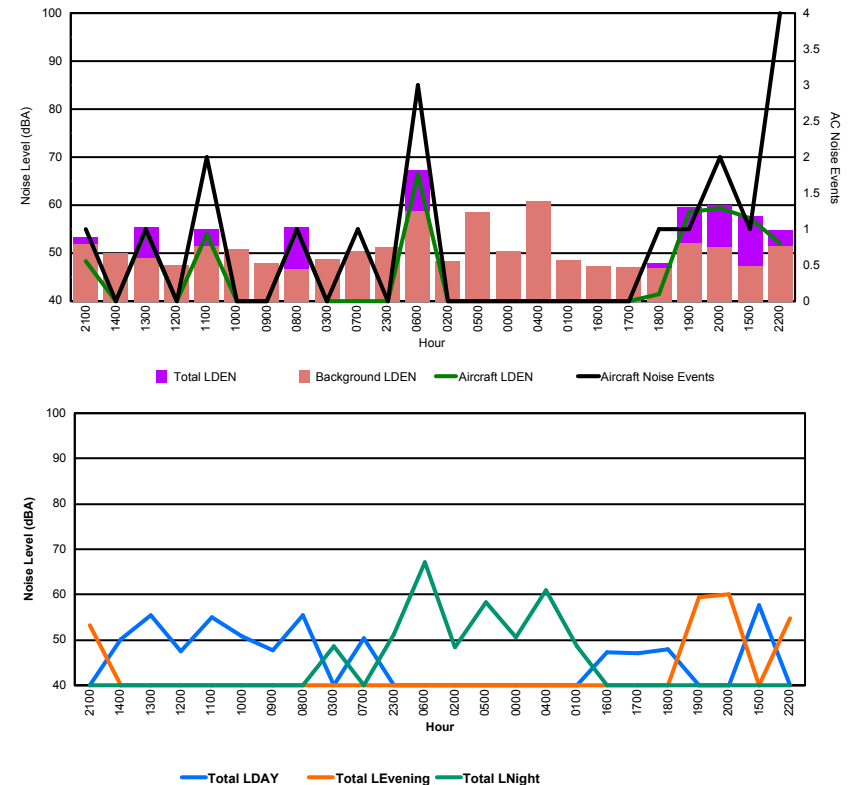


## Luxembourg Airport Noise Distribution by Hour

Between 19/01/2016 00:00:00 and 19/01/2016 23:59:59 (Local Time)

Day	Aircraft Events	Total LDEN dB (A)	Aircraft LDEN dB(A)	Background LDEN dB(A)	Total LDay dB(A)	Total LEvening dB(A)	Total LNight dB (A)
19/01/16 0:00	-	50.5	-	50.5	-	-	50.5
19/01/16 1:00	-	48.6	-	48.6	-	-	48.6
19/01/16 2:00	-	48.3	-	48.3	-	-	48.3
19/01/16 3:00	-	48.7	-	48.7	-	-	48.7
19/01/16 4:00	-	60.9	-	60.9	-	-	60.9
19/01/16 5:00	-	58.4	-	58.5	-	-	58.4
19/01/16 6:00	3	67.2	66.5	58.8	-	-	67.2
19/01/16 7:00	1	50.4	32.0	50.4	50.4	-	-
19/01/16 8:00	1	55.5	54.8	46.6	55.5	-	-
19/01/16 9:00	-	47.8	-	47.9	47.8	-	-
19/01/16 10:00	-	50.8	-	50.8	50.8	-	-
19/01/16 11:00	2	55.1	53.9	51.5	55.1	-	-
19/01/16 12:00	-	47.4	-	47.4	47.4	-	-
19/01/16 13:00	1	55.5	54.5	48.9	55.5	-	-
19/01/16 14:00	-	50.1	-	50.1	50.1	-	-
19/01/16 15:00	1	57.7	57.3	47.2	57.7	-	-
19/01/16 16:00	-	47.3	-	47.3	47.3	-	-
19/01/16 17:00	-	47.0	-	47.0	47.0	-	-
19/01/16 18:00	1	48.0	41.5	46.9	48.0	-	-
19/01/16 19:00	1	59.5	58.6	52.1	-	59.5	-
19/01/16 20:00	2	60.0	59.4	51.3	-	60.0	-
19/01/16 21:00	1	53.3	48.3	51.8	-	53.3	-
19/01/16 22:00	4	54.8	52.1	51.5	-	54.8	-
19/01/16 23:00	-	51.2	-	51.2	-	-	51.2
	<b>18</b>	<b>57.1</b>	<b>58.4</b>	<b>52.9</b>	<b>52.7</b>	<b>57.8</b>	<b>59.8</b>

Location: Roodt/Syr NMT # 1



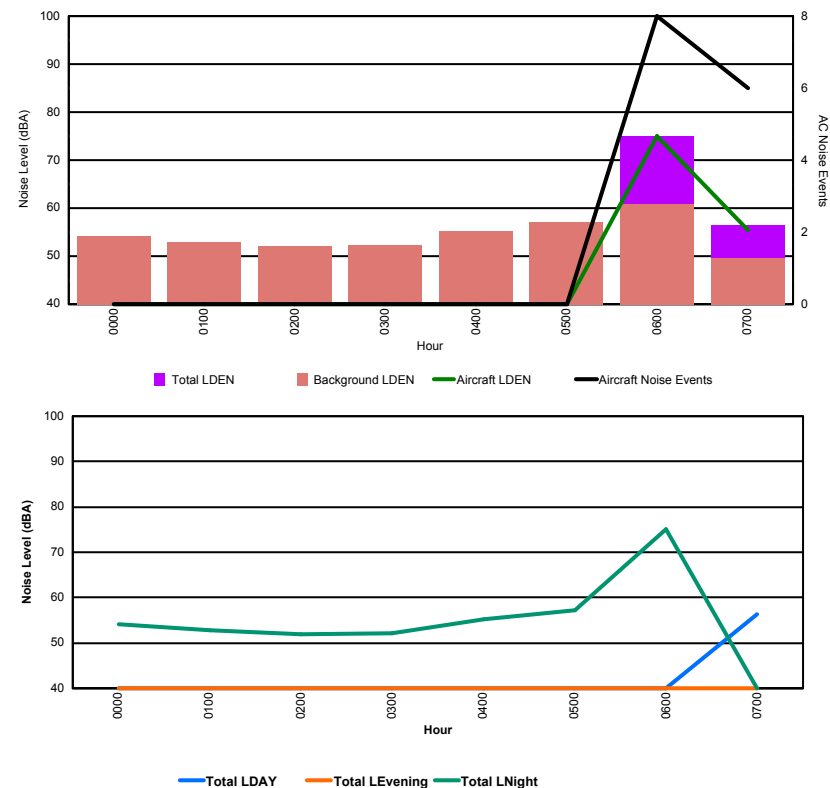


## Luxembourg Airport Noise Distribution by Hour

Between 19/01/2016 00:00:00 and 19/01/2016 23:59:59 (Local Time)

Day	Aircraft Events	Total LDEN dB (A)	Aircraft LDEN dB(A)	Background LDEN dB(A)	Total LDay dB(A)	Total LEvening dB(A)	Total LNight dB (A)
19/01/16 0:00	-	54.2	-	54.2	-	-	54.2
19/01/16 1:00	-	52.9	-	52.9	-	-	52.9
19/01/16 2:00	-	52.0	-	52.0	-	-	52.0
19/01/16 3:00	-	52.2	-	52.2	-	-	52.2
19/01/16 4:00	-	55.3	-	55.3	-	-	55.3
19/01/16 5:00	-	57.1	-	57.1	-	-	57.1
19/01/16 6:00	8	75.1	74.9	60.8	-	-	75.1
19/01/16 7:00	6	56.4	55.4	49.6	56.4	-	-
	<b>14</b>	<b>66.3</b>	<b>71.9</b>	<b>55.6</b>	<b>56.4</b>	<b>0.0</b>	<b>66.9</b>

Location: DVOR NMT # 2



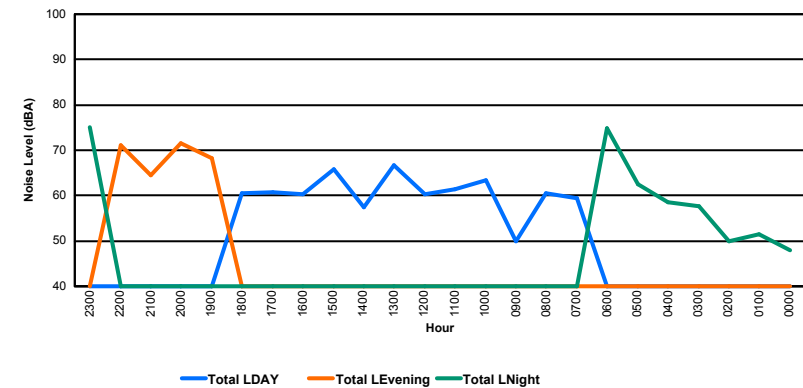
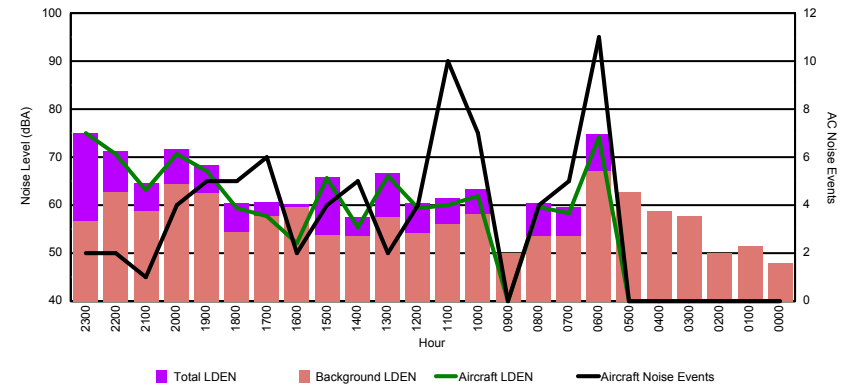


## Luxembourg Airport Noise Distribution by Hour

Between 19/01/2016 00:00:00 and 19/01/2016 23:59:59 (Local Time)

Day	Aircraft Events	Total LDEN dB (A)	Aircraft LDEN dB(A)	Background LDEN dB(A)	Total LDay dB(A)	Total LEvening dB(A)	Total LNight dB (A)
19/01/16 0:00	-	47.9	-	47.9	-	-	47.9
19/01/16 1:00	-	51.5	-	51.5	-	-	51.5
19/01/16 2:00	-	50.0	-	50.0	-	-	50.0
19/01/16 3:00	-	57.7	-	57.7	-	-	57.7
19/01/16 4:00	-	58.6	-	58.7	-	-	58.6
19/01/16 5:00	-	62.6	-	62.8	-	-	62.6
19/01/16 6:00	11	74.8	74.2	67.0	-	-	74.8
19/01/16 7:00	5	59.5	58.3	53.5	59.5	-	-
19/01/16 8:00	4	60.5	59.5	53.5	60.5	-	-
19/01/16 9:00	-	49.9	-	49.9	49.9	-	-
19/01/16 10:00	7	63.3	61.8	58.2	63.3	-	-
19/01/16 11:00	10	61.5	60.0	56.1	61.5	-	-
19/01/16 12:00	4	60.4	59.3	54.2	60.4	-	-
19/01/16 13:00	2	66.6	66.0	57.6	66.6	-	-
19/01/16 14:00	5	57.5	55.4	53.5	57.5	-	-
19/01/16 15:00	4	65.9	65.6	53.7	65.9	-	-
19/01/16 16:00	2	60.2	52.0	59.6	60.2	-	-
19/01/16 17:00	6	60.7	57.7	57.8	60.7	-	-
19/01/16 18:00	5	60.5	59.4	54.3	60.5	-	-
19/01/16 19:00	5	68.3	67.0	62.5	-	68.3	-
19/01/16 20:00	4	71.6	70.7	64.4	-	71.6	-
19/01/16 21:00	1	64.5	63.2	58.7	-	64.5	-
19/01/16 22:00	2	71.2	70.6	62.7	-	71.2	-
19/01/16 23:00	2	75.0	75.0	56.6	-	-	75.0
	<b>79</b>	<b>67.0</b>	<b>67.8</b>	<b>59.4</b>	<b>62.0</b>	<b>69.7</b>	<b>69.1</b>

Location: Mid Runway NMT # 3



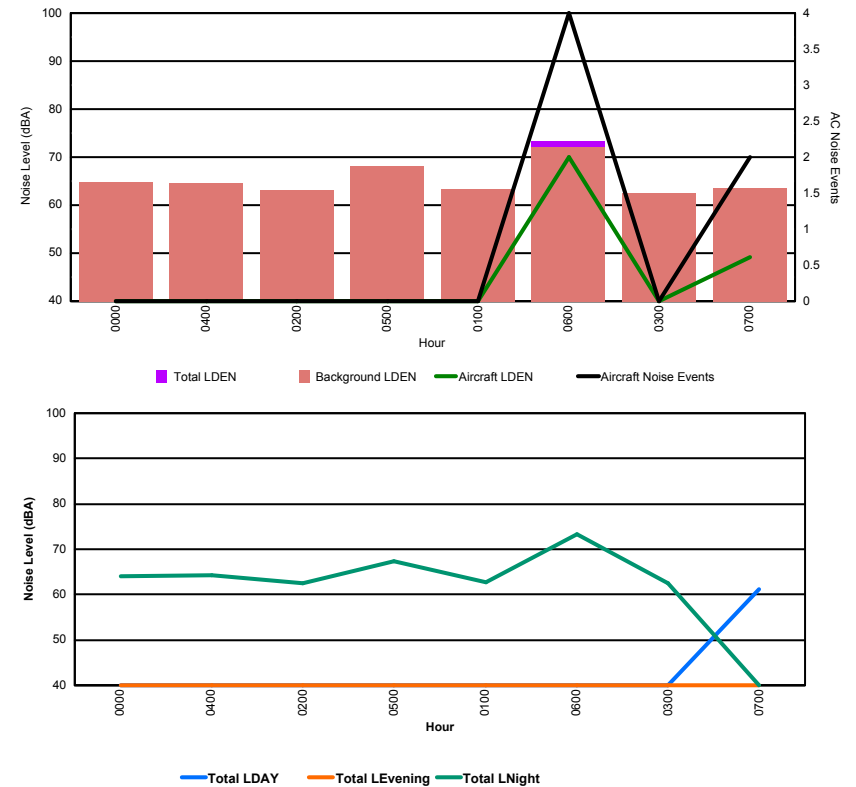


## Luxembourg Airport Noise Distribution by Hour

Between 19/01/2016 00:00:00 and 19/01/2016 23:59:59 (Local Time)

Day	Aircraft Events	Total LDEN dB (A)	Aircraft LDEN dB(A)	Background LDEN dB(A)	Total LDay dB(A)	Total LEvening dB(A)	Total LNight dB (A)
19/01/16 0:00	-	64.0	-	64.8	-	-	64.0
19/01/16 1:00	-	62.7	-	63.3	-	-	62.7
19/01/16 2:00	-	62.6	-	63.1	-	-	62.6
19/01/16 3:00	-	62.4	-	62.5	-	-	62.4
19/01/16 4:00	-	64.2	-	64.5	-	-	64.2
19/01/16 5:00	-	67.4	-	68.2	-	-	67.4
19/01/16 6:00	4	73.3	70.0	72.0	-	-	73.3
19/01/16 7:00	2	61.1	49.2	63.6	61.1	-	-
	<b>6</b>	<b>66.8</b>	<b>67.0</b>	<b>66.6</b>	<b>61.1</b>	<b>0.0</b>	<b>67.3</b>

Location: NDB-Hamm NMT # 4





## Luxembourg Airport Noise Distribution by Hour

Between 19/01/2016 00:00:00 and 19/01/2016 23:59:59 (Local Time)

Day	Aircraft Events	Total LDEN dB (A)	Aircraft LDEN dB(A)	Background LDEN dB(A)	Total LDay dB(A)	Total LEvening dB(A)	Total LNight dB (A)
19/01/16 0:00	-	66.4	-	67.0	-	-	66.4
19/01/16 1:00	-	62.4	-	62.7	-	-	62.4
19/01/16 2:00	-	61.9	-	62.0	-	-	61.9
19/01/16 3:00	-	62.2	-	62.2	-	-	62.2
19/01/16 4:00	-	65.5	-	65.6	-	-	65.5
19/01/16 5:00	-	69.2	-	70.6	-	-	69.2
19/01/16 6:00	1	72.2	64.3	73.5	-	-	72.2
19/01/16 7:00	-	62.2	-	63.8	62.2	-	-
19/01/16 8:00	2	61.7	51.1	63.2	61.7	-	-
19/01/16 9:00	9	63.5	54.6	63.4	63.5	-	-
19/01/16 10:00	13	63.1	57.6	62.1	63.1	-	-
19/01/16 11:00	2	62.5	52.7	62.4	62.5	-	-
19/01/16 12:00	3	62.1	52.0	61.8	62.1	-	-
19/01/16 13:00	6	62.3	56.0	61.4	62.3	-	-
19/01/16 14:58	-	60.5	-	60.5	60.5	-	-
19/01/16 15:00	2	62.7	46.0	62.8	62.7	-	-
19/01/16 16:00	7	64.1	57.4	63.3	64.1	-	-
19/01/16 17:00	8	61.6	56.5	60.2	61.6	-	-
19/01/16 18:00	3	60.3	49.5	60.0	60.3	-	-
19/01/16 19:00	3	66.1	60.5	64.8	-	66.1	-
19/01/16 20:00	5	67.2	60.5	66.2	-	67.2	-
19/01/16 21:00	6	64.6	57.9	63.7	-	64.6	-
19/01/16 22:00	2	66.0	61.8	64.1	-	66.0	-
19/01/16 23:00	1	68.5	65.2	65.7	-	-	68.5
	<b>73</b>	<b>65.3</b>	<b>59.2</b>	<b>65.4</b>	<b>62.3</b>	<b>66.1</b>	<b>67.5</b>

Location: Gare centrale NMT # 5

