

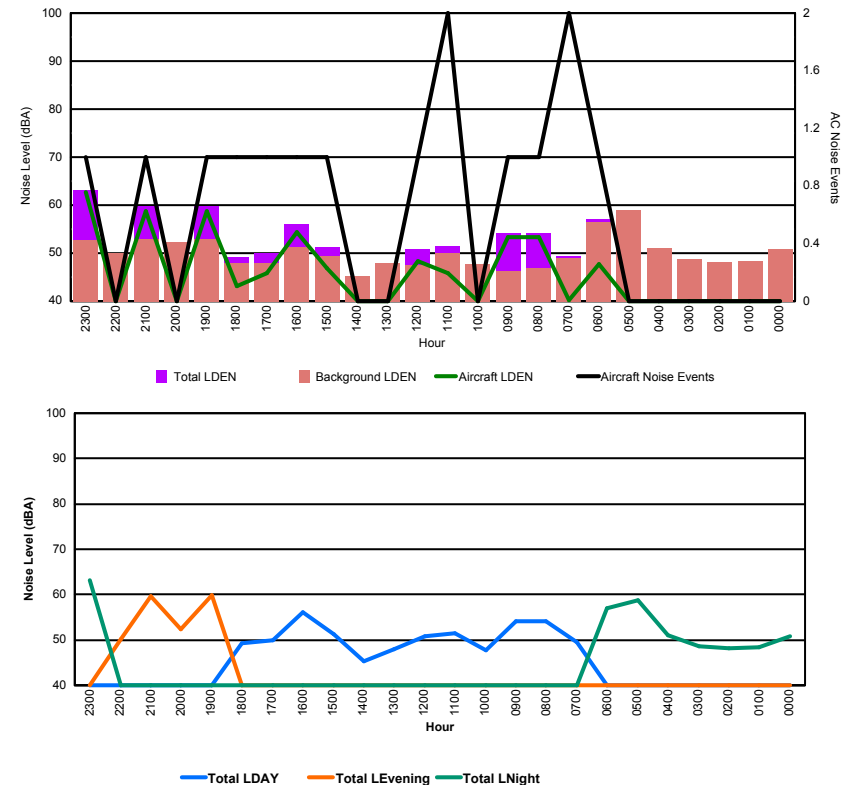


Luxembourg Airport Noise Distribution by Hour

Between 18/01/2016 00:00:00 and 18/01/2016 23:59:59 (Local Time)

Day	Aircraft Events	Total LDEN dB (A)	Aircraft LDEN dB(A)	Background LDEN dB(A)	Total LDay dB(A)	Total LEvening dB(A)	Total LNight dB (A)
18/01/16 0:00	-	50.9	-	50.9	-	-	50.9
18/01/16 1:00	-	48.3	-	48.3	-	-	48.3
18/01/16 2:00	-	48.2	-	48.2	-	-	48.2
18/01/16 3:00	-	48.7	-	48.7	-	-	48.7
18/01/16 4:00	-	51.0	-	51.0	-	-	51.0
18/01/16 5:00	-	58.8	-	58.9	-	-	58.8
18/01/16 6:00	1	57.0	47.8	56.5	-	-	57.0
18/01/16 7:00	2	49.4	40.2	48.9	49.4	-	-
18/01/16 8:00	1	54.2	53.3	46.9	54.2	-	-
18/01/16 9:00	1	54.1	53.4	46.2	54.1	-	-
18/01/16 10:00	-	47.7	-	47.7	47.7	-	-
18/01/16 11:00	2	51.4	45.9	50.1	51.4	-	-
18/01/16 12:00	1	50.9	48.3	47.4	50.9	-	-
18/01/16 13:00	-	48.0	-	48.0	48.0	-	-
18/01/16 14:00	-	45.3	-	45.3	45.3	-	-
18/01/16 15:00	1	51.3	46.8	49.3	51.3	-	-
18/01/16 16:00	1	56.1	54.4	51.2	56.1	-	-
18/01/16 17:00	1	50.0	45.8	48.0	50.0	-	-
18/01/16 18:00	1	49.2	43.1	48.0	49.2	-	-
18/01/16 19:00	1	59.8	58.8	53.0	-	59.8	-
18/01/16 20:00	-	52.3	-	52.3	-	52.3	-
18/01/16 21:00	1	59.7	58.7	53.0	-	59.7	-
18/01/16 22:00	-	50.1	-	50.1	-	50.1	-
18/01/16 23:00	1	63.2	62.8	52.7	-	-	63.2
	15	55.1	55.3	51.5	51.6	57.3	56.8

Location: Roodt/Syr NMT # 1



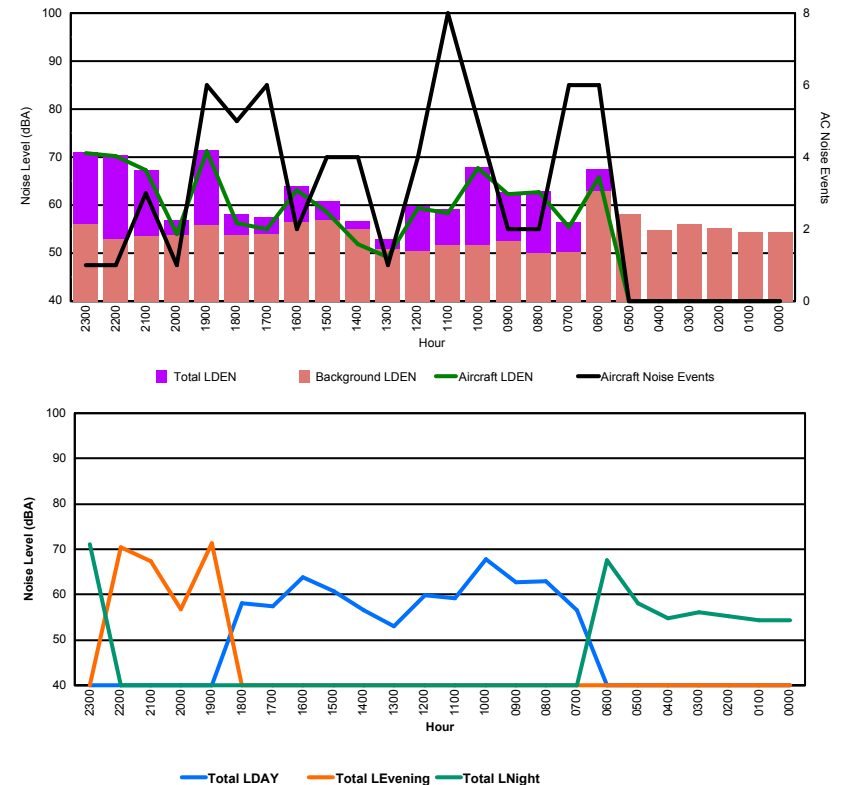


Luxembourg Airport Noise Distribution by Hour

Between 18/01/2016 00:00:00 and 18/01/2016 23:59:59 (Local Time)

Day	Aircraft Events	Total LDEN dB (A)	Aircraft LDEN dB(A)	Background LDEN dB(A)	Total LDay dB(A)	Total LEvening dB(A)	Total LNight dB (A)
18/01/16 0:00	-	54.4	-	54.4	-	-	54.4
18/01/16 1:00	-	54.4	-	54.4	-	-	54.4
18/01/16 2:00	-	55.2	-	55.2	-	-	55.2
18/01/16 3:00	-	56.1	-	56.1	-	-	56.1
18/01/16 4:00	-	54.8	-	54.8	-	-	54.8
18/01/16 5:00	-	58.2	-	58.2	-	-	58.2
18/01/16 6:00	6	67.5	65.8	62.9	-	-	67.5
18/01/16 7:00	6	56.5	55.4	50.2	56.5	-	-
18/01/16 8:00	2	62.9	62.7	50.0	62.9	-	-
18/01/16 9:00	2	62.7	62.3	52.6	62.7	-	-
18/01/16 10:00	5	67.9	67.8	51.6	67.9	-	-
18/01/16 11:00	8	59.2	58.4	51.7	59.2	-	-
18/01/16 12:00	4	59.8	59.3	50.4	59.8	-	-
18/01/16 13:00	1	53.0	49.1	50.8	53.0	-	-
18/01/16 14:00	4	56.6	51.8	55.0	56.6	-	-
18/01/16 15:00	4	60.8	58.6	56.9	60.8	-	-
18/01/16 16:00	2	63.9	63.1	56.4	63.9	-	-
18/01/16 17:00	6	57.4	54.9	53.9	57.4	-	-
18/01/16 18:00	5	58.1	56.2	53.7	58.1	-	-
18/01/16 19:00	6	71.4	71.2	55.9	-	71.4	-
18/01/16 20:00	1	56.8	53.9	53.7	-	56.8	-
18/01/16 21:00	3	67.3	67.2	53.5	-	67.3	-
18/01/16 22:00	1	70.4	70.2	53.0	-	70.4	-
18/01/16 23:00	1	71.1	70.9	56.0	-	-	71.1
	67	64.6	65.3	55.4	61.7	68.8	64.1

Location: DVOR NMT # 2



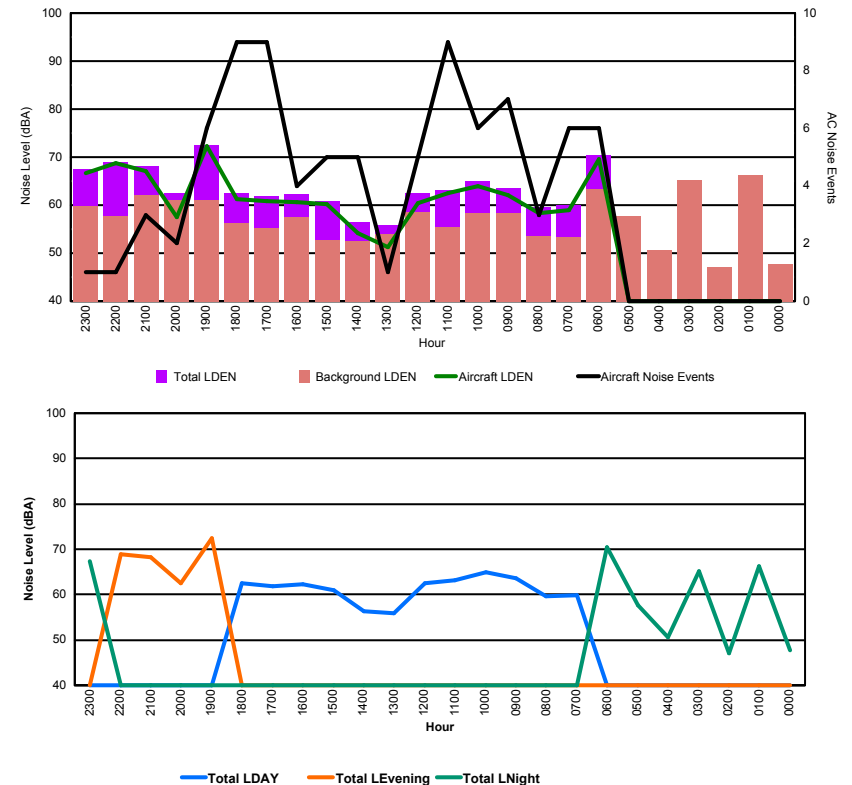


Luxembourg Airport Noise Distribution by Hour

Between 18/01/2016 00:00:00 and 18/01/2016 23:59:59 (Local Time)

Day	Aircraft Events	Total LDEN dB (A)	Aircraft LDEN dB(A)	Background LDEN dB(A)	Total LDay dB(A)	Total LEvening dB(A)	Total LNight dB (A)
18/01/16 0:00	-	47.8	-	47.8	-	-	47.8
18/01/16 1:00	-	66.3	-	66.3	-	-	66.3
18/01/16 2:00	-	47.0	-	47.0	-	-	47.0
18/01/16 3:00	-	65.1	-	65.2	-	-	65.1
18/01/16 4:00	-	50.6	-	50.6	-	-	50.6
18/01/16 5:00	-	57.7	-	57.7	-	-	57.7
18/01/16 6:00	6	70.4	69.5	63.4	-	-	70.4
18/01/16 7:00	6	59.9	58.9	53.3	59.9	-	-
18/01/16 8:00	3	59.6	58.4	53.6	59.6	-	-
18/01/16 9:00	7	63.5	62.0	58.3	63.5	-	-
18/01/16 10:00	6	65.0	63.9	58.4	65.0	-	-
18/01/16 11:00	9	63.2	62.4	55.4	63.2	-	-
18/01/16 12:00	5	62.6	60.5	58.6	62.6	-	-
18/01/16 13:00	1	55.9	51.3	54.0	55.9	-	-
18/01/16 14:00	5	56.4	54.2	52.6	56.4	-	-
18/01/16 15:00	5	60.9	60.2	52.7	60.9	-	-
18/01/16 16:00	4	62.3	60.6	57.4	62.3	-	-
18/01/16 17:00	9	61.9	60.9	55.2	61.9	-	-
18/01/16 18:00	9	62.4	61.2	56.3	62.4	-	-
18/01/16 19:00	6	72.5	72.2	61.0	-	72.5	-
18/01/16 20:00	2	62.6	57.4	61.1	-	62.6	-
18/01/16 21:00	3	68.2	67.1	62.0	-	68.2	-
18/01/16 22:00	1	69.0	68.7	57.7	-	69.0	-
18/01/16 23:00	1	67.4	66.6	59.8	-	-	67.4
	88	65.1	65.0	59.4	61.8	69.3	64.9

Location: Mid Runway NMT # 3

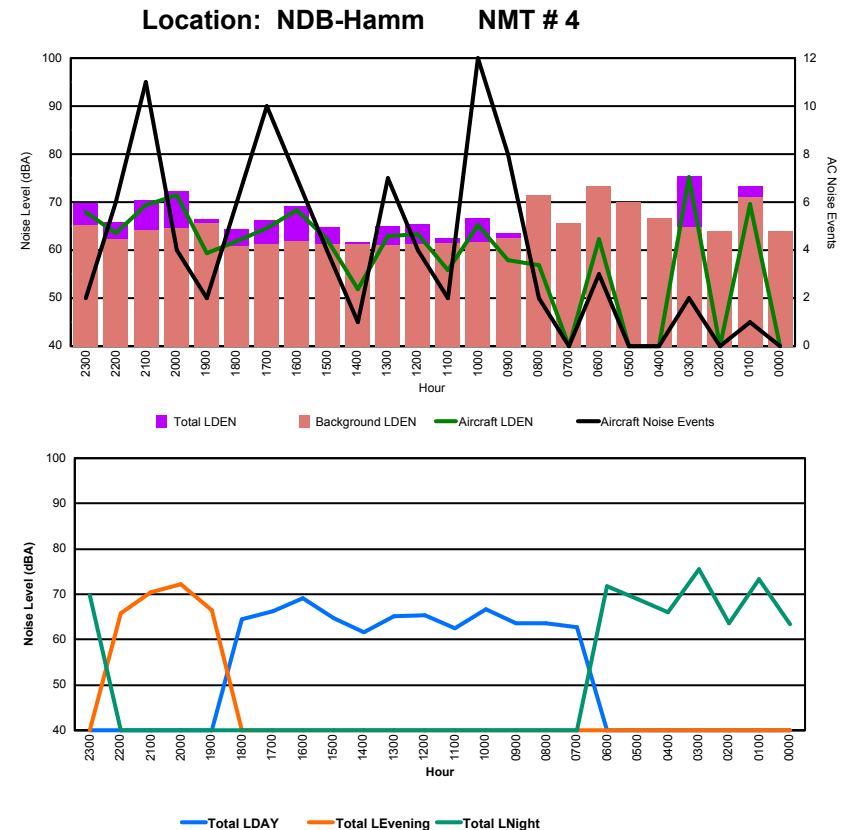




Luxembourg Airport Noise Distribution by Hour

Between 18/01/2016 00:00:00 and 18/01/2016 23:59:59 (Local Time)

Day	Aircraft Events	Total LDEN dB (A)	Aircraft LDEN dB(A)	Background LDEN dB(A)	Total LDay dB(A)	Total LEvening dB(A)	Total LNight dB (A)
18/01/16 0:00	-	63.4	-	64.0	-	-	63.4
18/01/16 1:00	1	73.4	69.6	71.1	-	-	73.4
18/01/16 2:00	-	63.5	-	64.0	-	-	63.5
18/01/16 3:00	2	75.5	75.2	64.8	-	-	75.5
18/01/16 4:00	-	66.1	-	66.6	-	-	66.1
18/01/16 5:00	-	68.9	-	70.1	-	-	68.9
18/01/16 6:00	3	71.8	62.2	73.3	-	-	71.8
18/01/16 7:00	-	62.8	-	65.7	62.8	-	-
18/01/16 8:00	2	63.6	56.8	71.5	63.6	-	-
18/01/16 9:00	8	63.5	57.9	62.5	63.5	-	-
18/01/16 10:00	12	66.7	65.2	61.7	66.7	-	-
18/01/16 11:00	2	62.5	55.8	61.5	62.5	-	-
18/01/16 12:00	4	65.4	63.4	61.3	65.4	-	-
18/01/16 13:00	7	65.1	63.0	61.1	65.1	-	-
18/01/16 14:00	1	61.7	51.8	61.2	61.7	-	-
18/01/16 15:00	4	64.7	62.2	61.3	64.7	-	-
18/01/16 16:00	7	69.1	68.3	61.8	69.1	-	-
18/01/16 17:00	10	66.2	64.6	61.3	66.2	-	-
18/01/16 18:00	6	64.4	61.9	60.9	64.4	-	-
18/01/16 19:00	2	66.5	59.3	65.7	-	66.5	-
18/01/16 20:00	4	72.2	71.4	64.5	-	72.2	-
18/01/16 21:00	11	70.5	69.4	64.2	-	70.5	-
18/01/16 22:00	6	65.9	63.5	62.3	-	65.9	-
18/01/16 23:00	2	69.8	67.9	65.3	-	-	69.8
	94	68.6	67.1	66.3	65.1	69.6	70.9





Luxembourg Airport Noise Distribution by Hour

Between 18/01/2016 00:00:00 and 18/01/2016 23:59:59 (Local Time)

Day	Aircraft Events	Total LDEN dB (A)	Aircraft LDEN dB(A)	Background LDEN dB(A)	Total LDay dB(A)	Total LEvening dB(A)	Total LNight dB (A)
18/01/16 0:00	-	63.5	-	64.4	-	-	63.5
18/01/16 1:00	2	67.9	66.6	62.4	-	-	67.9
18/01/16 2:00	-	62.0	-	62.2	-	-	62.0
18/01/16 3:00	2	69.1	68.3	61.9	-	-	69.1
18/01/16 4:00	-	64.4	-	64.5	-	-	64.4
18/01/16 5:00	-	68.1	-	69.1	-	-	68.1
18/01/16 6:00	-	70.3	-	71.9	-	-	70.3
18/01/16 7:00	-	61.6	-	63.7	61.6	-	-
18/01/16 8:00	1	62.3	50.9	65.0	62.3	-	-
18/01/16 9:00	5	62.1	51.9	62.0	62.1	-	-
18/01/16 10:00	12	63.8	59.8	62.0	63.8	-	-
18/01/16 11:00	3	61.9	50.3	61.7	61.9	-	-
18/01/16 12:00	4	62.9	57.6	61.7	62.9	-	-
18/01/16 13:00	6	63.0	57.5	61.8	63.0	-	-
18/01/16 14:00	1	61.2	44.3	61.1	61.2	-	-
18/01/16 15:00	3	64.3	55.6	63.8	64.3	-	-
18/01/16 16:00	7	64.3	60.1	62.3	64.3	-	-
18/01/16 17:00	8	62.5	58.2	60.7	62.5	-	-
18/01/16 18:00	5	62.1	56.1	61.1	62.1	-	-
18/01/16 19:00	2	65.5	53.3	65.3	-	65.5	-
18/01/16 20:00	5	67.7	64.5	64.9	-	67.7	-
18/01/16 21:00	10	66.5	63.4	63.9	-	66.5	-
18/01/16 22:00	4	63.8	57.2	62.9	-	63.8	-
18/01/16 23:00	3	67.6	61.7	66.5	-	-	67.6
	83	65.4	61.2	64.7	62.8	66.1	67.4

Location: Gare centrale NMT # 5

