

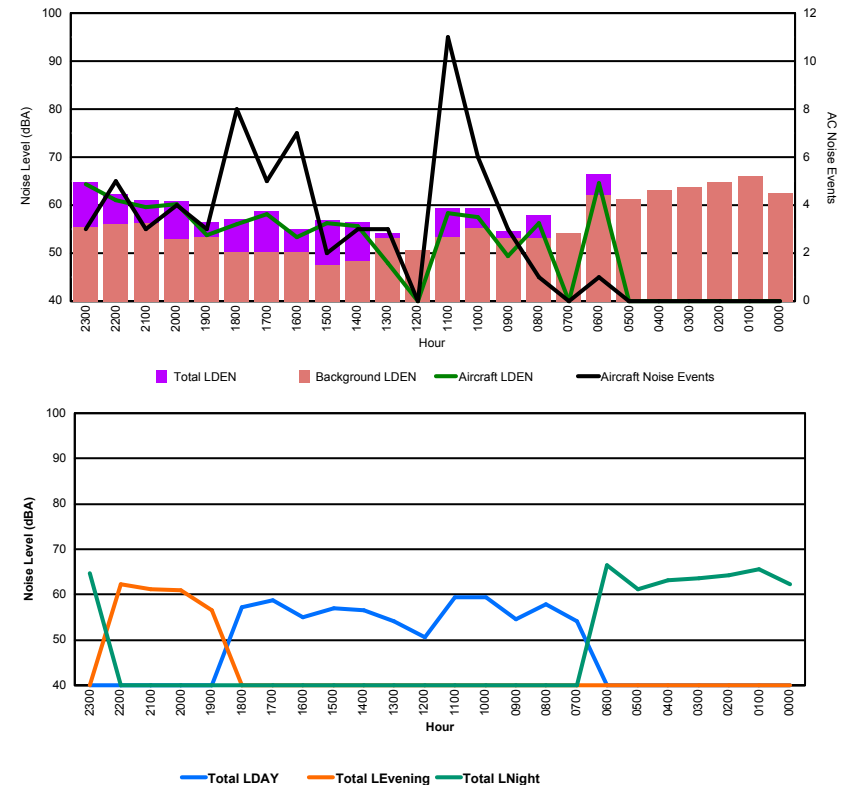


Luxembourg Airport Noise Distribution by Hour

Between 15/01/2016 00:00:00 and 15/01/2016 23:59:59 (Local Time)

Day	Aircraft Events	Total LDEN dB (A)	Aircraft LDEN dB(A)	Background LDEN dB(A)	Total LDay dB(A)	Total LEvening dB(A)	Total LNight dB (A)
15/01/16 0:00	-	62.2	-	62.4	-	-	62.2
15/01/16 1:00	-	65.7	-	66.1	-	-	65.7
15/01/16 2:00	-	64.3	-	64.8	-	-	64.3
15/01/16 3:00	-	63.6	-	63.7	-	-	63.6
15/01/16 4:00	-	63.1	-	63.2	-	-	63.1
15/01/16 5:00	-	61.1	-	61.2	-	-	61.1
15/01/16 6:00	1	66.4	64.5	62.1	-	-	66.4
15/01/16 7:00	-	54.1	-	54.2	54.1	-	-
15/01/16 8:00	1	57.9	56.2	53.1	57.9	-	-
15/01/16 9:00	3	54.5	49.3	53.1	54.5	-	-
15/01/16 10:00	6	59.4	57.4	55.3	59.4	-	-
15/01/16 11:00	11	59.4	58.4	53.4	59.4	-	-
15/01/16 12:00	-	50.7	-	50.7	50.7	-	-
15/01/16 13:00	3	54.2	48.0	53.1	54.2	-	-
15/01/16 14:00	3	56.5	55.7	48.3	56.5	-	-
15/01/16 15:00	2	56.9	56.3	47.6	56.9	-	-
15/01/16 16:00	7	54.9	53.3	50.2	54.9	-	-
15/01/16 17:00	5	58.8	58.2	50.3	58.8	-	-
15/01/16 18:00	8	57.1	56.1	50.2	57.1	-	-
15/01/16 19:00	3	56.5	53.7	53.4	-	56.5	-
15/01/16 20:00	4	60.9	60.2	52.9	-	60.9	-
15/01/16 21:00	3	61.1	59.5	56.2	-	61.1	-
15/01/16 22:00	5	62.2	61.0	56.0	-	62.2	-
15/01/16 23:00	3	64.8	64.3	55.4	-	-	64.8
	68	61.2	59.0	59.2	56.8	60.6	64.2

Location: Roodt/Syr NMT # 1



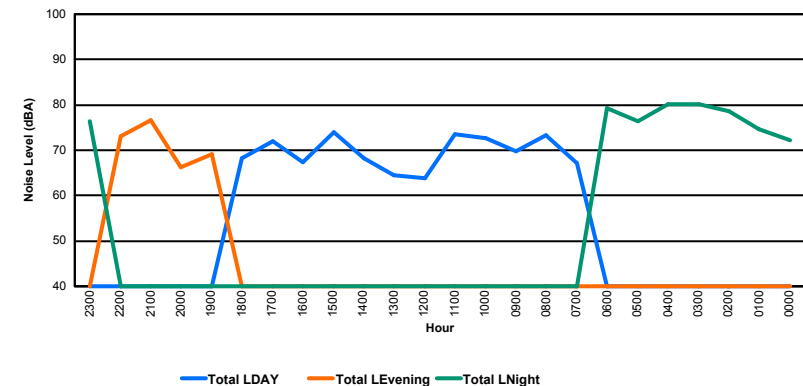
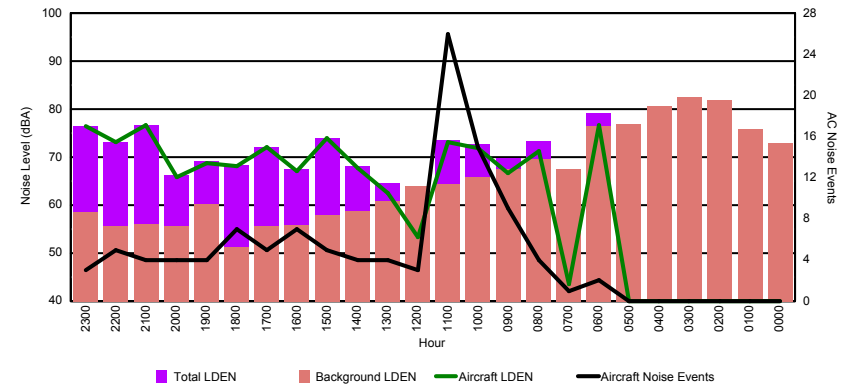


Luxembourg Airport Noise Distribution by Hour

Between 15/01/2016 00:00:00 and 15/01/2016 23:59:59 (Local Time)

Day	Aircraft Events	Total LDEN dB (A)	Aircraft LDEN dB(A)	Background LDEN dB(A)	Total LDay dB(A)	Total LEvening dB(A)	Total LNight dB (A)
15/01/16 0:00	-	72.3	-	72.9	-	-	72.3
15/01/16 1:00	-	74.6	-	75.9	-	-	74.6
15/01/16 2:00	-	78.7	-	81.8	-	-	78.7
15/01/16 3:00	-	80.1	-	82.6	-	-	80.1
15/01/16 4:00	-	80.1	-	80.7	-	-	80.1
15/01/16 5:00	-	76.4	-	76.8	-	-	76.4
15/01/16 6:00	2	79.2	76.7	76.4	-	-	79.2
15/01/16 7:00	1	67.1	43.6	67.5	67.1	-	-
15/01/16 8:00	4	73.3	71.3	69.5	73.3	-	-
15/01/16 9:00	9	69.8	66.7	67.6	69.8	-	-
15/01/16 10:00	15	72.7	71.9	65.8	72.7	-	-
15/01/16 11:00	26	73.5	73.1	64.4	73.5	-	-
15/01/16 12:00	3	63.8	53.4	63.9	63.8	-	-
15/01/16 13:00	4	64.6	62.5	60.8	64.6	-	-
15/01/16 14:00	4	68.2	67.7	58.7	68.2	-	-
15/01/16 15:00	5	74.0	73.9	57.9	74.0	-	-
15/01/16 16:00	7	67.4	67.1	55.9	67.4	-	-
15/01/16 17:00	5	72.1	72.0	55.7	72.1	-	-
15/01/16 18:00	7	68.3	68.2	51.2	68.3	-	-
15/01/16 19:00	4	69.2	68.7	60.2	-	69.2	-
15/01/16 20:00	4	66.3	65.9	55.7	-	66.3	-
15/01/16 21:00	4	76.7	76.6	56.1	-	76.7	-
15/01/16 22:00	5	73.2	73.1	55.7	-	73.2	-
15/01/16 23:00	3	76.5	76.5	58.6	-	-	76.5
	112	74.8	72.0	74.2	70.7	73.0	77.9

Location: DVOR NMT # 2



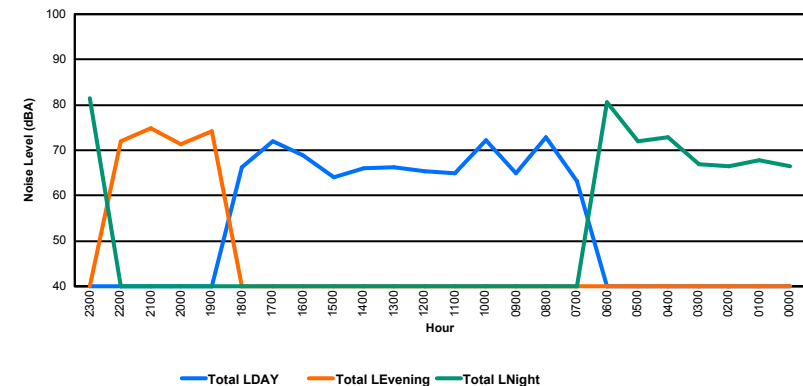
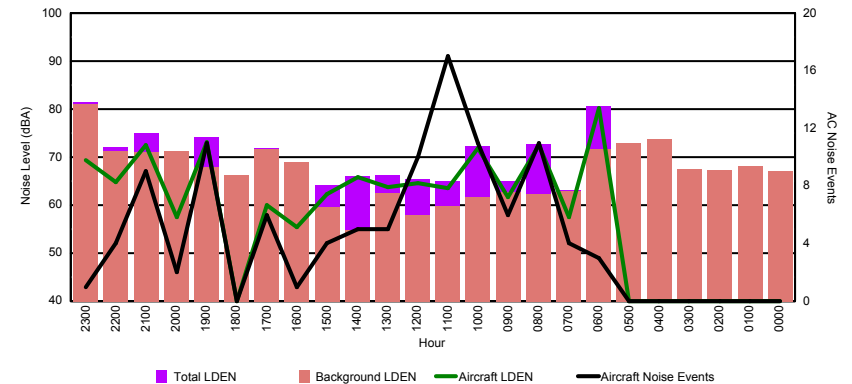


Luxembourg Airport Noise Distribution by Hour

Between 15/01/2016 00:00:00 and 15/01/2016 23:59:59 (Local Time)

Day	Aircraft Events	Total LDEN dB (A)	Aircraft LDEN dB(A)	Background LDEN dB(A)	Total LDay dB(A)	Total LEvening dB(A)	Total LNight dB (A)
15/01/16 0:00	-	66.4	-	67.1	-	-	66.4
15/01/16 1:00	-	67.8	-	68.2	-	-	67.8
15/01/16 2:00	-	66.5	-	67.2	-	-	66.5
15/01/16 3:00	-	66.9	-	67.4	-	-	66.9
15/01/16 4:00	-	72.8	-	73.7	-	-	72.8
15/01/16 5:00	-	72.1	-	73.0	-	-	72.1
15/01/16 6:00	3	80.6	80.2	71.6	-	-	80.6
15/01/16 7:00	4	63.2	57.5	63.0	63.2	-	-
15/01/16 8:00	11	72.8	72.6	62.3	72.8	-	-
15/01/16 9:00	6	65.0	61.6	62.8	65.0	-	-
15/01/16 10:00	11	72.3	71.9	61.6	72.3	-	-
15/01/16 11:00	17	64.9	63.5	59.7	64.9	-	-
15/01/16 12:00	10	65.4	64.6	57.9	65.4	-	-
15/01/16 13:00	5	66.2	63.8	62.4	66.2	-	-
15/01/16 14:00	5	66.1	65.8	54.8	66.1	-	-
15/01/16 15:00	4	64.1	62.3	59.6	64.1	-	-
15/01/16 16:00	1	69.0	55.4	68.9	69.0	-	-
15/01/16 17:00	6	71.9	59.9	71.6	71.9	-	-
15/01/16 18:00	-	66.2	-	66.2	66.2	-	-
15/01/16 19:00	11	74.2	73.1	68.0	-	74.2	-
15/01/16 20:00	2	71.3	57.5	71.2	-	71.3	-
15/01/16 21:00	9	74.9	72.6	71.1	-	74.9	-
15/01/16 22:00	4	72.1	64.7	71.3	-	72.1	-
15/01/16 23:00	1	81.4	69.4	81.1	-	-	81.4
	110	73.0	70.8	70.9	68.6	73.4	75.9

Location: Mid Runway NMT # 3



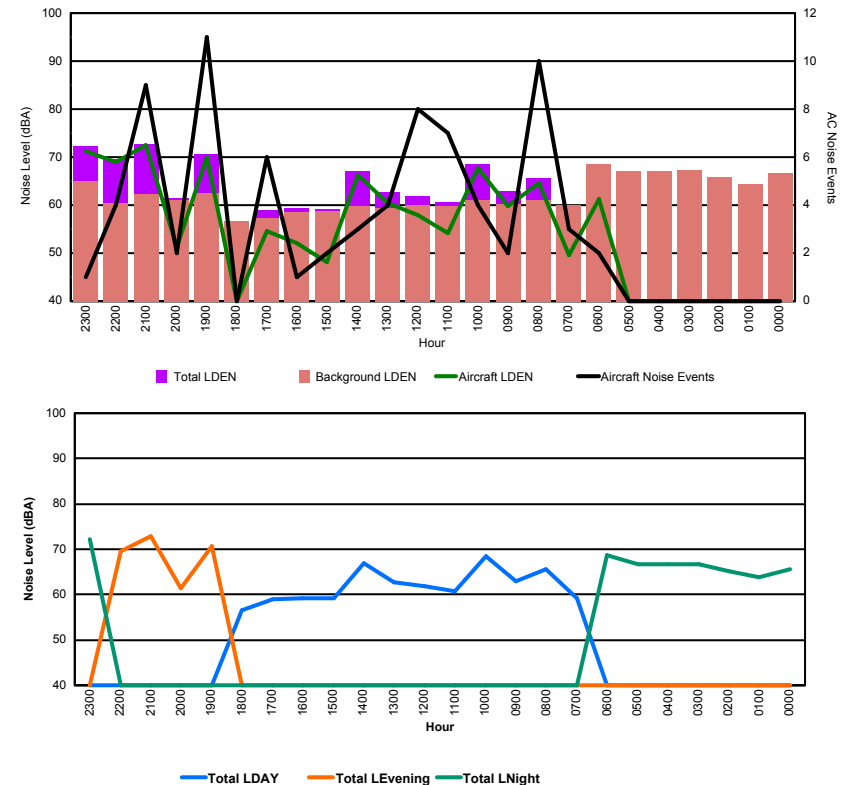


Luxembourg Airport Noise Distribution by Hour

Between 15/01/2016 00:00:00 and 15/01/2016 23:59:59 (Local Time)

Day	Aircraft Events	Total LDEN dB (A)	Aircraft LDEN dB(A)	Background LDEN dB(A)	Total LDay dB(A)	Total LEvening dB(A)	Total LNight dB (A)
15/01/16 0:00	-	65.6	-	66.6	-	-	65.6
15/01/16 1:00	-	63.8	-	64.4	-	-	63.8
15/01/16 2:00	-	65.1	-	65.8	-	-	65.1
15/01/16 3:00	-	66.8	-	67.3	-	-	66.8
15/01/16 4:00	-	66.8	-	67.1	-	-	66.8
15/01/16 5:00	-	66.6	-	67.0	-	-	66.6
15/01/16 6:00	2	68.6	61.3	68.6	-	-	68.6
15/01/16 7:00	3	59.1	49.5	60.1	59.1	-	-
15/01/16 8:00	10	65.6	64.5	61.0	65.6	-	-
15/01/16 9:00	2	63.0	59.8	60.3	63.0	-	-
15/01/16 10:00	4	68.5	67.7	61.0	68.5	-	-
15/01/16 11:00	7	60.7	54.1	59.8	60.7	-	-
15/01/16 12:00	8	61.8	57.9	59.9	61.8	-	-
15/01/16 13:00	4	62.8	60.4	59.3	62.8	-	-
15/01/16 14:00	3	67.0	66.2	59.8	67.0	-	-
15/01/16 15:00	2	59.1	48.1	58.8	59.1	-	-
15/01/16 16:00	1	59.3	52.1	58.5	59.3	-	-
15/01/16 17:00	6	59.0	54.6	57.2	59.0	-	-
15/01/16 18:00	-	56.5	-	56.6	56.5	-	-
15/01/16 19:00	11	70.6	70.0	62.6	-	70.6	-
15/01/16 20:00	2	61.4	51.2	61.0	-	61.4	-
15/01/16 21:00	9	72.8	72.4	62.3	-	72.8	-
15/01/16 22:00	4	69.5	69.0	60.5	-	69.5	-
15/01/16 23:00	1	72.3	71.3	64.9	-	-	72.3
	79	66.8	65.9	63.5	63.4	70.1	67.7

Location: NDB-Hamm NMT # 4



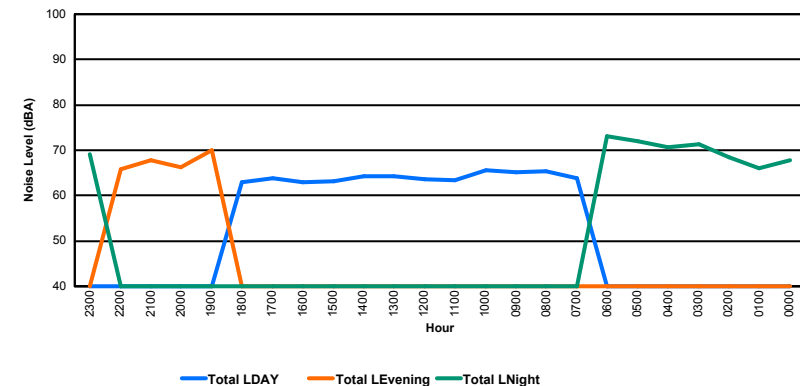
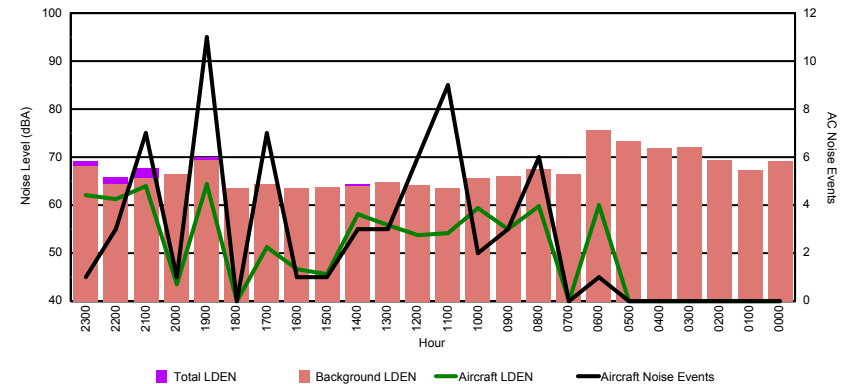


Luxembourg Airport Noise Distribution by Hour

Between 15/01/2016 00:00:00 and 15/01/2016 23:59:59 (Local Time)

Day	Aircraft Events	Total LDEN dB (A)	Aircraft LDEN dB(A)	Background LDEN dB(A)	Total LDay dB(A)	Total LEvening dB(A)	Total LNight dB (A)
15/01/16 0:00	-	67.7	-	69.1	-	-	67.7
15/01/16 1:00	-	66.0	-	67.2	-	-	66.0
15/01/16 2:00	-	68.5	-	69.4	-	-	68.5
15/01/16 3:00	-	71.4	-	72.0	-	-	71.4
15/01/16 4:00	-	70.7	-	71.8	-	-	70.7
15/01/16 5:00	-	71.9	-	73.3	-	-	71.9
15/01/16 6:00	1	73.2	60.0	75.6	-	-	73.2
15/01/16 7:00	-	63.9	-	66.5	63.9	-	-
15/01/16 8:00	6	65.3	59.7	67.6	65.3	-	-
15/01/16 9:00	3	65.1	54.9	66.0	65.1	-	-
15/01/16 10:00	2	65.6	59.3	65.6	65.6	-	-
15/01/16 11:00	9	63.3	54.2	63.5	63.3	-	-
15/01/16 12:00	6	63.7	53.8	64.1	63.7	-	-
15/01/16 13:00	3	64.3	55.8	64.8	64.3	-	-
15/01/16 14:00	3	64.3	58.1	64.0	64.3	-	-
15/01/16 15:00	1	63.1	45.6	63.7	63.1	-	-
15/01/16 16:00	1	62.9	46.6	63.6	62.9	-	-
15/01/16 17:00	7	63.8	51.2	64.3	63.8	-	-
15/01/16 18:00	-	62.9	-	63.6	62.9	-	-
15/01/16 19:00	11	70.1	64.4	69.4	-	70.1	-
15/01/16 20:00	1	66.3	43.5	66.4	-	66.3	-
15/01/16 21:00	7	67.8	64.0	65.7	-	67.8	-
15/01/16 22:00	3	65.9	61.2	64.3	-	65.9	-
15/01/16 23:00	1	69.1	62.1	68.2	-	-	69.1
	65	67.7	59.1	68.6	64.1	67.9	70.4

Location: Gare centrale NMT # 5



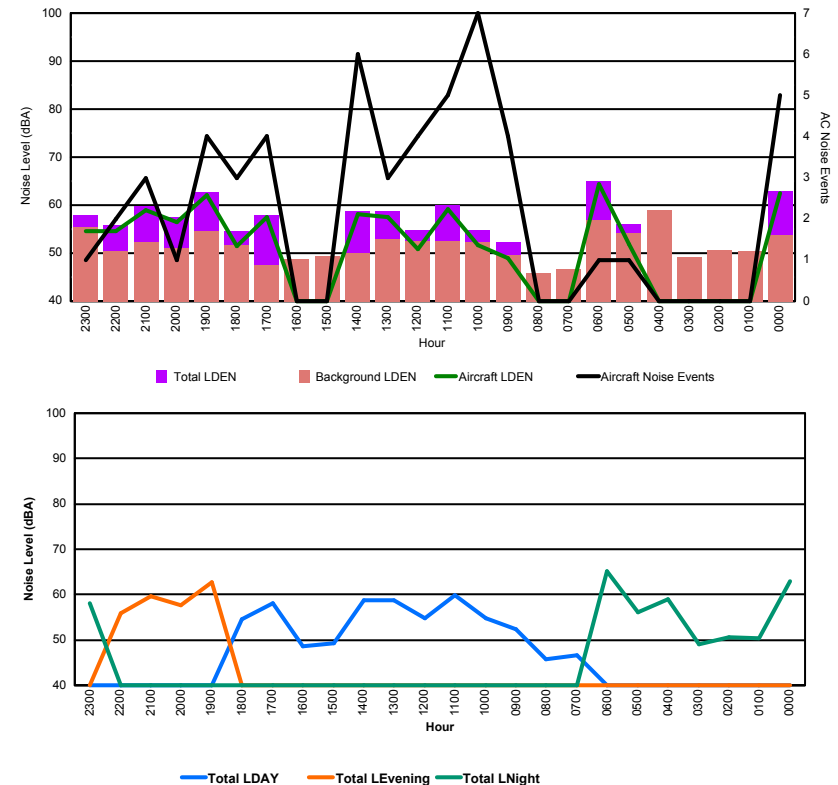


Luxembourg Airport Noise Distribution by Hour

Between 16/01/2016 00:00:00 and 16/01/2016 23:59:59 (Local Time)

Day	Aircraft Events	Total LDEN dB (A)	Aircraft LDEN dB(A)	Background LDEN dB(A)	Total LDay dB(A)	Total LEvening dB(A)	Total LNight dB (A)
16/01/16 0:00	5	63.0	62.4	53.8	-	-	63.0
16/01/16 1:00	-	50.3	-	50.4	-	-	50.3
16/01/16 2:00	-	50.6	-	50.6	-	-	50.6
16/01/16 3:00	-	49.1	-	49.1	-	-	49.1
16/01/16 4:00	-	58.9	-	59.0	-	-	58.9
16/01/16 5:00	1	56.1	51.9	54.2	-	-	56.1
16/01/16 6:00	1	65.1	64.4	56.8	-	-	65.1
16/01/16 7:00	-	46.7	-	46.7	46.7	-	-
16/01/16 8:00	-	45.8	-	45.8	45.8	-	-
16/01/16 9:00	4	52.3	49.0	49.6	52.3	-	-
16/01/16 10:00	7	54.8	51.7	52.2	54.8	-	-
16/01/16 11:00	5	59.9	59.1	52.4	59.9	-	-
16/01/16 12:00	4	54.7	50.8	52.6	54.7	-	-
16/01/16 13:00	3	58.7	57.4	52.9	58.7	-	-
16/01/16 14:00	6	58.8	58.2	50.0	58.8	-	-
16/01/16 15:00	-	49.3	-	49.3	49.3	-	-
16/01/16 16:00	-	48.7	-	48.7	48.7	-	-
16/01/16 17:00	4	58.0	57.6	47.5	58.0	-	-
16/01/16 18:00	3	54.5	51.4	51.6	54.5	-	-
16/01/16 19:00	4	62.8	62.1	54.6	-	62.8	-
16/01/16 20:00	1	57.6	56.5	51.0	-	57.6	-
16/01/16 21:00	3	59.7	58.9	52.2	-	59.7	-
16/01/16 22:00	2	55.9	54.5	50.5	-	55.9	-
16/01/16 23:00	1	58.0	54.5	55.5	-	-	58.0
	54	58.1	58.4	52.7	55.6	59.8	59.6

Location: Roodt/Syr NMT # 1



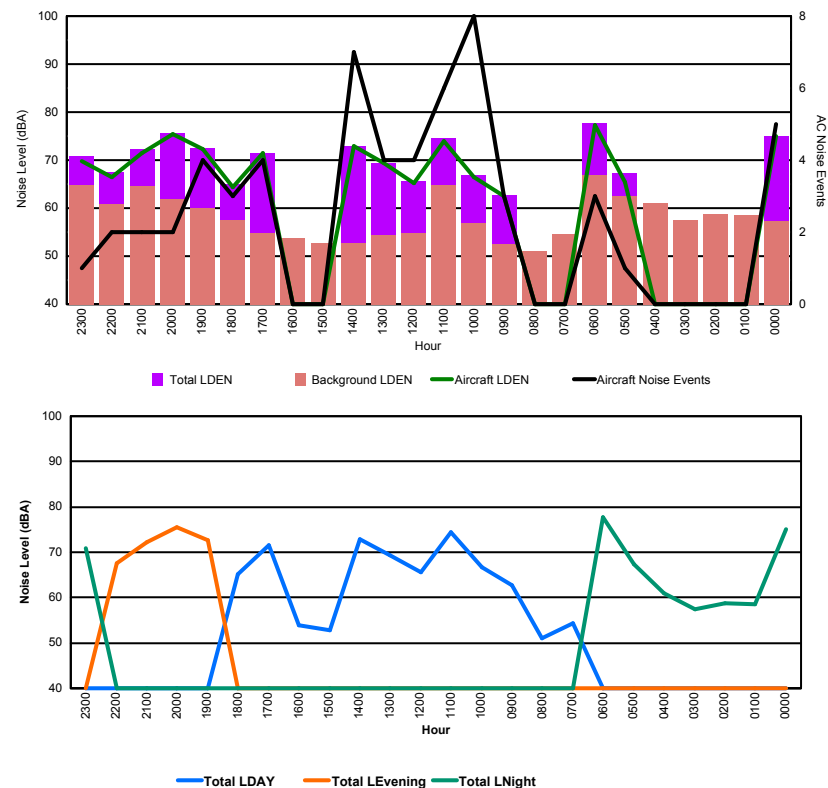


Luxembourg Airport Noise Distribution by Hour

Between 16/01/2016 00:00:00 and 16/01/2016 23:59:59 (Local Time)

Day	Aircraft Events	Total LDEN dB (A)	Aircraft LDEN dB(A)	Background LDEN dB(A)	Total LDay dB(A)	Total LEvening dB(A)	Total LNight dB (A)
16/01/16 0:00	5	75.0	74.9	57.3	-	-	75.0
16/01/16 1:00	-	58.5	-	58.6	-	-	58.5
16/01/16 2:00	-	58.7	-	58.8	-	-	58.7
16/01/16 3:00	-	57.5	-	57.5	-	-	57.5
16/01/16 4:00	-	61.0	-	61.0	-	-	61.0
16/01/16 5:00	1	67.3	65.5	62.6	-	-	67.3
16/01/16 6:00	3	77.7	77.3	66.9	-	-	77.7
16/01/16 7:00	-	54.3	-	54.5	54.3	-	-
16/01/16 8:00	-	51.1	-	51.1	51.1	-	-
16/01/16 9:00	3	62.8	62.4	52.6	62.8	-	-
16/01/16 10:00	8	66.8	66.4	56.9	66.8	-	-
16/01/16 11:00	6	74.5	74.0	64.7	74.5	-	-
16/01/16 12:00	4	65.6	65.2	54.8	65.6	-	-
16/01/16 13:00	4	69.4	69.3	54.4	69.4	-	-
16/01/16 14:00	7	72.9	72.9	52.7	72.9	-	-
16/01/16 15:00	-	52.7	-	52.7	52.7	-	-
16/01/16 16:00	-	53.8	-	53.8	53.8	-	-
16/01/16 17:00	4	71.5	71.4	54.8	71.5	-	-
16/01/16 18:00	3	65.1	64.3	57.6	65.1	-	-
16/01/16 19:00	4	72.6	72.3	60.1	-	72.6	-
16/01/16 20:00	2	75.6	75.5	61.9	-	75.6	-
16/01/16 21:00	2	72.2	71.4	64.6	-	72.2	-
16/01/16 22:00	2	67.5	66.5	60.8	-	67.5	-
16/01/16 23:00	1	70.9	69.7	64.7	-	-	70.9
	59	70.6	71.9	60.4	68.5	72.8	71.4

Location: DVOR NMT # 2

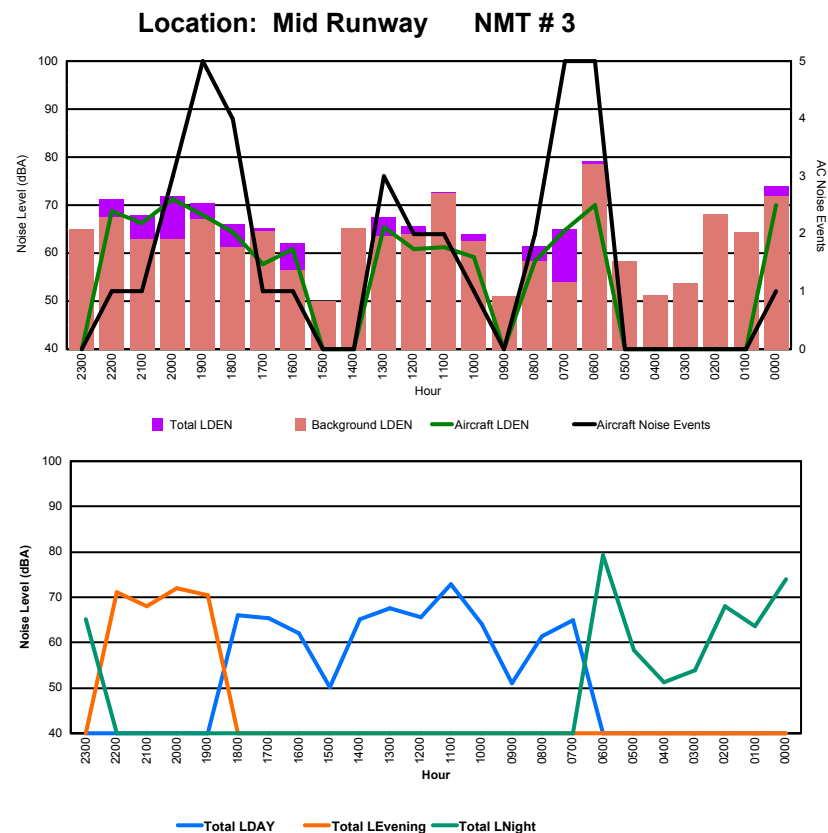




Luxembourg Airport Noise Distribution by Hour

Between 16/01/2016 00:00:00 and 16/01/2016 23:59:59 (Local Time)

Day	Aircraft Events	Total LDEN dB (A)	Aircraft LDEN dB(A)	Background LDEN dB(A)	Total LDay dB(A)	Total LEvening dB(A)	Total LNight dB (A)
16/01/16 0:00	1	74.0	70.0	71.9	-	-	74.0
16/01/16 1:00	-	63.7	-	64.4	-	-	63.7
16/01/16 2:00	-	68.1	-	68.2	-	-	68.1
16/01/16 3:00	-	53.8	-	53.8	-	-	53.8
16/01/16 4:00	-	51.2	-	51.2	-	-	51.2
16/01/16 5:00	-	58.3	-	58.3	-	-	58.3
16/01/16 6:00	5	79.2	70.1	78.6	-	-	79.2
16/01/16 7:00	5	65.0	64.7	54.0	65.0	-	-
16/01/16 8:00	2	61.4	58.4	58.3	61.4	-	-
16/01/16 9:00	-	51.0	-	51.1	51.0	-	-
16/01/16 10:00	1	64.0	59.1	62.4	64.0	-	-
16/01/16 11:00	2	72.8	61.2	72.5	72.8	-	-
16/01/16 12:00	2	65.7	60.8	64.0	65.7	-	-
16/01/16 13:00	3	67.5	65.4	63.5	67.5	-	-
16/01/16 14:00	-	65.2	-	65.2	65.2	-	-
16/01/16 15:00	-	50.1	-	50.1	50.1	-	-
16/01/16 16:00	1	62.1	60.8	56.5	62.1	-	-
16/01/16 17:00	1	65.3	57.8	64.5	65.3	-	-
16/01/16 18:00	4	66.1	64.4	61.2	66.1	-	-
16/01/16 19:00	5	70.5	67.9	67.1	-	70.5	-
16/01/16 20:00	3	71.9	71.3	62.9	-	71.9	-
16/01/16 21:00	1	68.0	66.3	62.9	-	68.0	-
16/01/16 22:00	1	71.2	68.7	67.6	-	71.2	-
16/01/16 23:00	-	65.1	-	65.1	-	-	65.1
	37	69.5	66.5	67.9	66.0	70.6	71.8

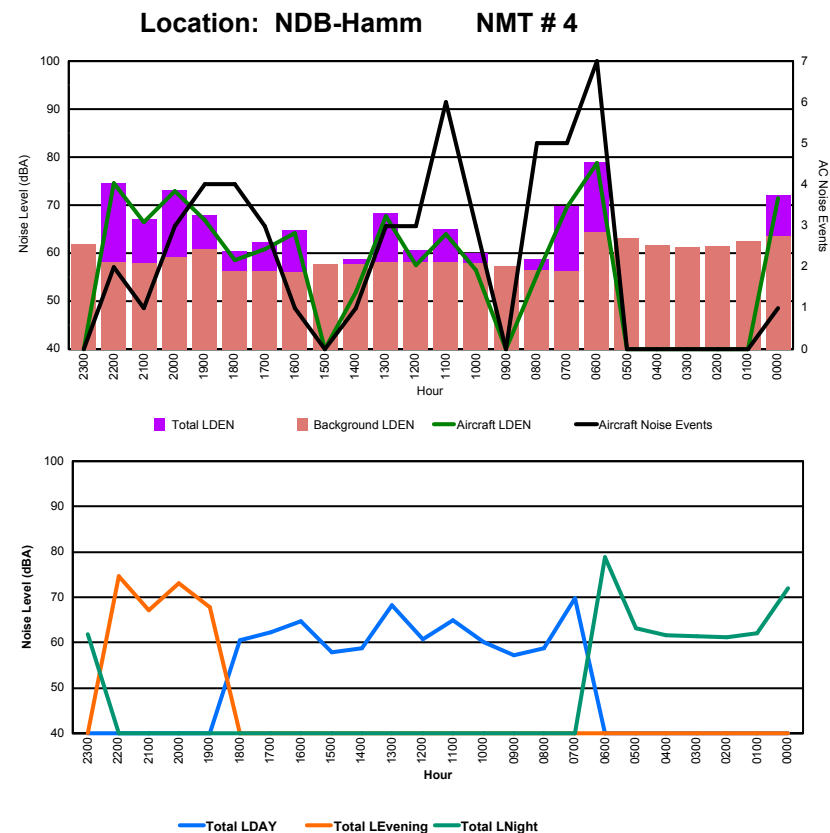




Luxembourg Airport Noise Distribution by Hour

Between 16/01/2016 00:00:00 and 16/01/2016 23:59:59 (Local Time)

Day	Aircraft Events	Total LDEN dB (A)	Aircraft LDEN dB(A)	Background LDEN dB(A)	Total LDay dB(A)	Total LEvening dB(A)	Total LNight dB (A)
16/01/16 0:00	1	72.0	71.4	63.6	-	-	72.0
16/01/16 1:00	-	62.0	-	62.5	-	-	62.0
16/01/16 2:00	-	61.2	-	61.5	-	-	61.2
16/01/16 3:00	-	61.3	-	61.3	-	-	61.3
16/01/16 4:00	-	61.7	-	61.7	-	-	61.7
16/01/16 5:00	-	63.1	-	63.1	-	-	63.1
16/01/16 6:00	7	78.9	78.7	64.4	-	-	78.9
16/01/16 7:00	5	69.7	69.5	56.2	69.7	-	-
16/01/16 8:00	5	58.7	55.5	56.4	58.7	-	-
16/01/16 9:00	-	57.2	-	57.2	57.2	-	-
16/01/16 10:00	3	60.1	56.4	57.9	60.1	-	-
16/01/16 11:00	6	65.0	64.0	58.2	65.0	-	-
16/01/16 12:00	3	60.7	57.4	58.1	60.7	-	-
16/01/16 13:00	3	68.3	67.8	58.2	68.3	-	-
16/01/16 14:00	1	58.8	51.8	57.8	58.8	-	-
16/01/16 15:00	-	57.8	-	57.8	57.8	-	-
16/01/16 16:00	1	64.8	64.1	56.0	64.8	-	-
16/01/16 17:00	3	62.2	60.9	56.3	62.2	-	-
16/01/16 18:00	4	60.5	58.6	56.2	60.5	-	-
16/01/16 19:00	4	67.9	66.9	60.8	-	67.9	-
16/01/16 20:00	3	73.1	72.9	59.1	-	73.1	-
16/01/16 21:00	1	67.1	66.5	58.0	-	67.1	-
16/01/16 22:00	2	74.6	74.5	58.2	-	74.6	-
16/01/16 23:00	-	61.9	-	61.9	-	-	61.9
	52	69.1	70.2	60.1	64.0	71.8	71.1



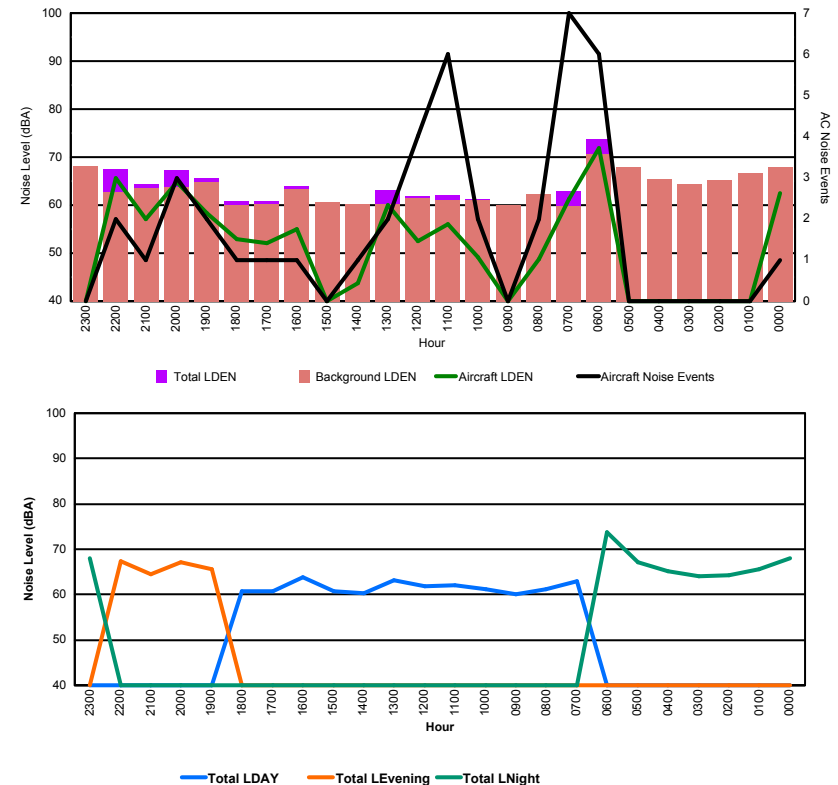


Luxembourg Airport Noise Distribution by Hour

Between 16/01/2016 00:00:00 and 16/01/2016 23:59:59 (Local Time)

Day	Aircraft Events	Total LDEN dB (A)	Aircraft LDEN dB(A)	Background LDEN dB(A)	Total LDay dB(A)	Total LEvening dB(A)	Total LNight dB (A)
16/01/16 0:00	1	68.0	62.4	67.9	-	-	68.0
16/01/16 1:00	-	65.5	-	66.6	-	-	65.5
16/01/16 2:00	-	64.3	-	65.2	-	-	64.3
16/01/16 3:00	-	64.1	-	64.3	-	-	64.1
16/01/16 4:00	-	65.2	-	65.4	-	-	65.2
16/01/16 5:00	-	67.2	-	67.9	-	-	67.2
16/01/16 6:00	6	73.8	71.8	70.7	-	-	73.8
16/01/16 7:00	7	63.0	61.2	59.7	63.0	-	-
16/01/16 8:00	2	61.1	48.7	62.2	61.1	-	-
16/01/16 9:00	-	60.0	-	60.1	60.0	-	-
16/01/16 10:00	2	61.2	49.1	61.0	61.2	-	-
16/01/16 11:00	6	62.1	56.0	61.1	62.1	-	-
16/01/16 12:00	4	61.8	52.5	61.5	61.8	-	-
16/01/16 13:00	2	63.1	60.0	60.3	63.1	-	-
16/01/16 14:00	1	60.3	43.7	60.3	60.3	-	-
16/01/16 15:00	-	60.7	-	60.7	60.7	-	-
16/01/16 16:00	1	63.9	54.9	63.4	63.9	-	-
16/01/16 17:00	1	60.8	52.0	60.3	60.8	-	-
16/01/16 18:00	1	60.8	53.0	60.1	60.8	-	-
16/01/16 19:00	2	65.6	58.3	64.7	-	65.6	-
16/01/16 20:00	3	67.2	64.7	63.8	-	67.2	-
16/01/16 21:00	1	64.4	57.1	63.5	-	64.4	-
16/01/16 22:00	2	67.4	65.6	62.8	-	67.4	-
16/01/16 23:00	-	68.1	-	68.2	-	-	68.1
	42	65.7	62.5	64.6	61.7	66.3	68.3

Location: Gare centrale NMT # 5



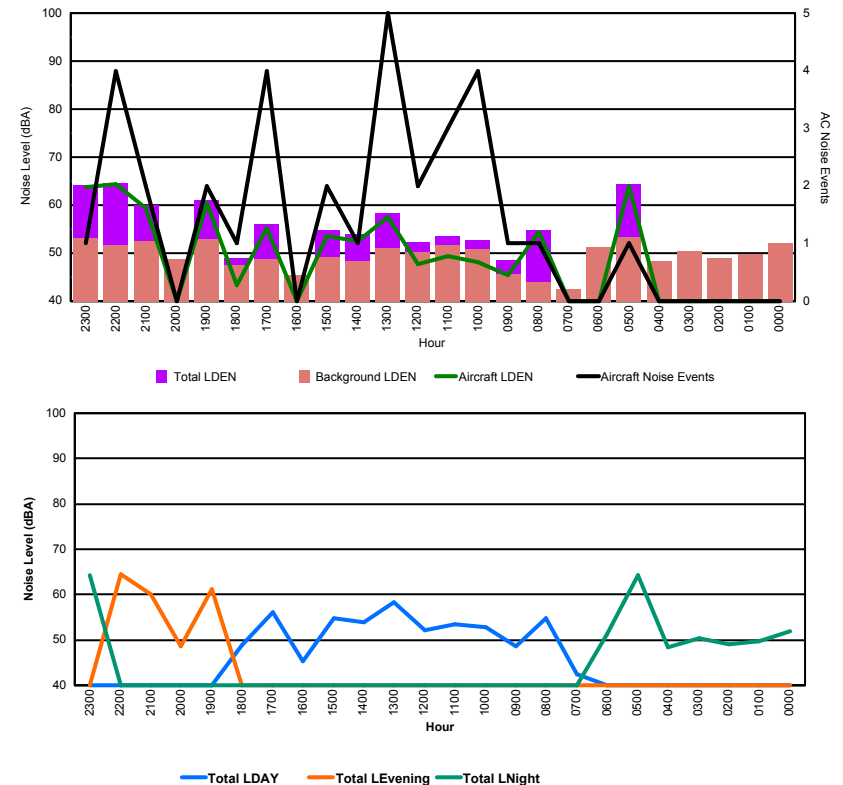


Luxembourg Airport Noise Distribution by Hour

Between 17/01/2016 00:00:00 and 17/01/2016 23:59:59 (Local Time)

Day	Aircraft Events	Total LDEN dB (A)	Aircraft LDEN dB(A)	Background LDEN dB(A)	Total LDay dB(A)	Total LEvening dB(A)	Total LNight dB (A)
17/01/16 0:00	-	52.0	-	52.1	-	-	52.0
17/01/16 1:00	-	49.7	-	49.7	-	-	49.7
17/01/16 2:00	-	49.0	-	49.0	-	-	49.0
17/01/16 3:00	-	50.4	-	50.4	-	-	50.4
17/01/16 4:00	-	48.4	-	48.4	-	-	48.4
17/01/16 5:00	1	64.3	63.9	53.4	-	-	64.3
17/01/16 6:00	-	51.3	-	51.3	-	-	51.3
17/01/16 7:00	-	42.5	-	42.5	42.5	-	-
17/01/16 8:00	1	54.7	54.3	44.0	54.7	-	-
17/01/16 9:00	1	48.6	45.5	45.6	48.6	-	-
17/01/16 10:00	4	52.7	48.1	50.9	52.7	-	-
17/01/16 11:00	3	53.5	49.3	51.6	53.5	-	-
17/01/16 12:00	2	52.2	47.8	50.3	52.2	-	-
17/01/16 13:00	5	58.3	57.5	51.0	58.3	-	-
17/01/16 14:00	1	54.0	52.5	48.3	54.0	-	-
17/01/16 15:00	2	54.8	53.5	49.1	54.8	-	-
17/01/16 16:00	-	45.4	-	45.4	45.4	-	-
17/01/16 17:00	4	56.1	55.2	48.8	56.1	-	-
17/01/16 18:00	1	48.9	43.3	47.5	48.9	-	-
17/01/16 19:00	2	61.1	60.5	53.0	-	61.1	-
17/01/16 20:00	-	48.7	-	48.7	-	48.7	-
17/01/16 21:00	2	60.1	59.3	52.4	-	60.1	-
17/01/16 22:00	4	64.5	64.3	51.6	-	64.5	-
17/01/16 23:00	1	64.2	63.8	53.2	-	-	64.2
	34	57.6	58.8	50.3	53.5	61.1	58.7

Location: Roodt/Syr NMT # 1



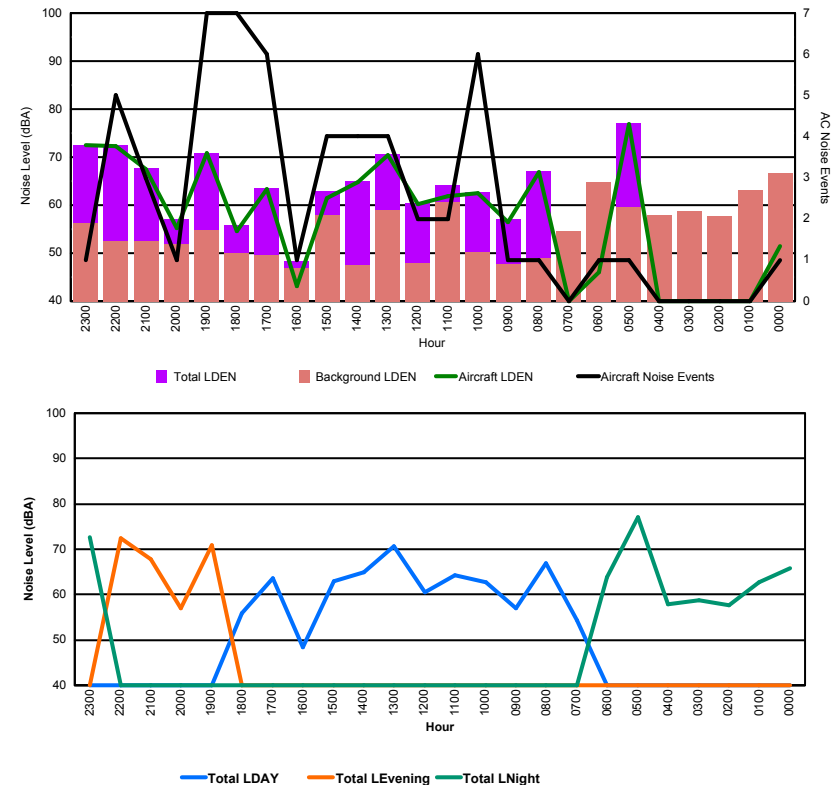


Luxembourg Airport Noise Distribution by Hour

Between 17/01/2016 00:00:00 and 17/01/2016 23:59:59 (Local Time)

Day	Aircraft Events	Total LDEN dB (A)	Aircraft LDEN dB(A)	Background LDEN dB(A)	Total LDay dB(A)	Total LEvening dB(A)	Total LNight dB (A)
17/01/16 0:00	1	65.9	51.5	66.6	-	-	65.9
17/01/16 1:00	-	62.7	-	63.1	-	-	62.7
17/01/16 2:00	-	57.6	-	57.7	-	-	57.6
17/01/16 3:00	-	58.7	-	58.7	-	-	58.7
17/01/16 4:00	-	57.8	-	57.9	-	-	57.8
17/01/16 5:00	1	77.0	76.9	59.5	-	-	77.0
17/01/16 6:00	1	63.8	46.1	64.7	-	-	63.8
17/01/16 7:00	-	54.4	-	54.5	54.4	-	-
17/01/16 8:00	1	67.0	66.9	48.9	67.0	-	-
17/01/16 9:00	1	57.0	56.5	47.7	57.0	-	-
17/01/16 10:00	6	62.7	62.4	50.3	62.7	-	-
17/01/16 11:00	2	64.2	61.8	60.6	64.2	-	-
17/01/16 12:00	2	60.5	60.2	47.9	60.5	-	-
17/01/16 13:00	4	70.7	70.4	59.0	70.7	-	-
17/01/16 14:00	4	64.9	64.8	47.4	64.9	-	-
17/01/16 15:00	4	63.0	61.4	58.0	63.0	-	-
17/01/16 16:00	1	48.4	43.1	46.9	48.4	-	-
17/01/16 17:00	6	63.5	63.3	49.6	63.5	-	-
17/01/16 18:00	7	55.8	54.6	49.9	55.8	-	-
17/01/16 19:00	7	70.9	70.8	54.8	-	70.9	-
17/01/16 20:00	1	57.0	55.3	51.9	-	57.0	-
17/01/16 21:00	3	67.7	67.6	52.6	-	67.7	-
17/01/16 22:00	5	72.4	72.3	52.4	-	72.4	-
17/01/16 23:00	1	72.6	72.5	56.3	-	-	72.6
	58	67.8	68.3	58.5	64.1	69.6	69.9

Location: DVOR NMT # 2



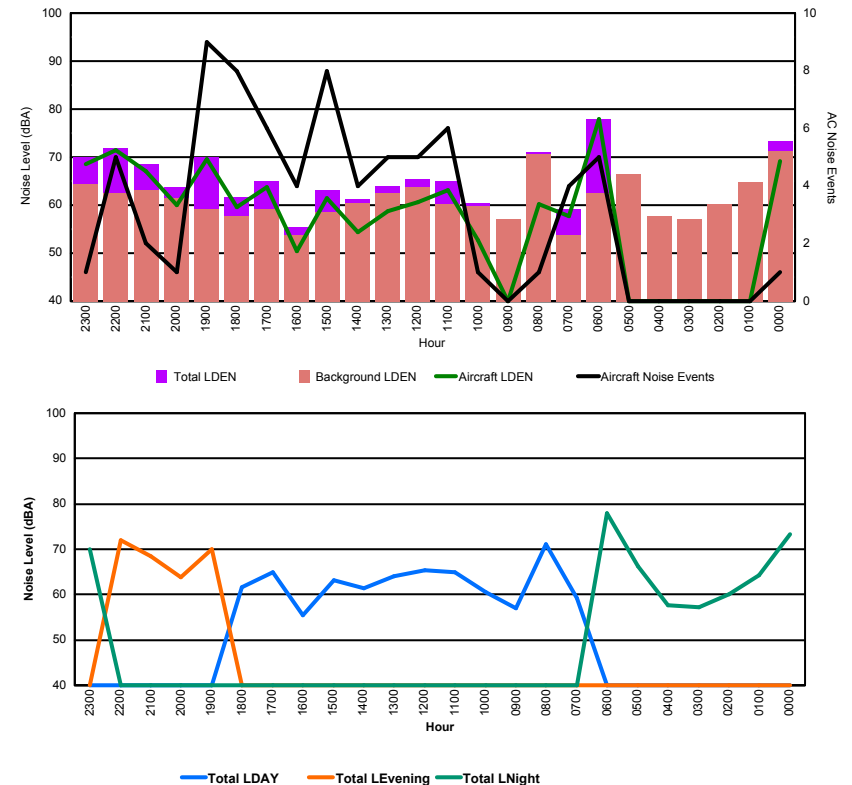


Luxembourg Airport Noise Distribution by Hour

Between 17/01/2016 00:00:00 and 17/01/2016 23:59:59 (Local Time)

Day	Aircraft Events	Total LDEN dB (A)	Aircraft LDEN dB(A)	Background LDEN dB(A)	Total LDay dB(A)	Total LEvening dB(A)	Total LNight dB (A)
17/01/16 0:00	1	73.3	69.2	71.3	-	-	73.3
17/01/16 1:00	-	64.2	-	64.8	-	-	64.2
17/01/16 2:00	-	60.1	-	60.2	-	-	60.1
17/01/16 3:00	-	57.1	-	57.1	-	-	57.1
17/01/16 4:00	-	57.7	-	57.7	-	-	57.7
17/01/16 5:00	-	66.3	-	66.4	-	-	66.3
17/01/16 6:00	5	78.0	77.9	62.6	-	-	78.0
17/01/16 7:00	4	59.2	57.8	53.8	59.2	-	-
17/01/16 8:00	1	71.1	60.2	70.7	71.1	-	-
17/01/16 9:00	-	56.9	-	57.0	56.9	-	-
17/01/16 10:00	1	60.5	52.8	59.7	60.5	-	-
17/01/16 11:00	6	64.9	63.2	60.2	64.9	-	-
17/01/16 12:00	5	65.4	60.6	63.7	65.4	-	-
17/01/16 13:00	5	64.0	58.8	62.6	64.0	-	-
17/01/16 14:00	4	61.3	54.4	60.4	61.3	-	-
17/01/16 15:00	8	63.2	61.5	58.5	63.2	-	-
17/01/16 16:00	4	55.4	50.5	53.8	55.4	-	-
17/01/16 17:00	6	64.9	63.7	59.2	64.9	-	-
17/01/16 18:00	8	61.7	59.6	57.8	61.7	-	-
17/01/16 19:00	9	69.9	69.6	59.1	-	69.9	-
17/01/16 20:00	1	63.8	60.1	61.4	-	63.8	-
17/01/16 21:00	2	68.5	67.0	63.2	-	68.5	-
17/01/16 22:00	5	71.9	71.4	62.4	-	71.9	-
17/01/16 23:00	1	70.0	68.6	64.3	-	-	70.0
	76	68.5	68.1	63.7	64.4	69.4	71.1

Location: Mid Runway NMT # 3



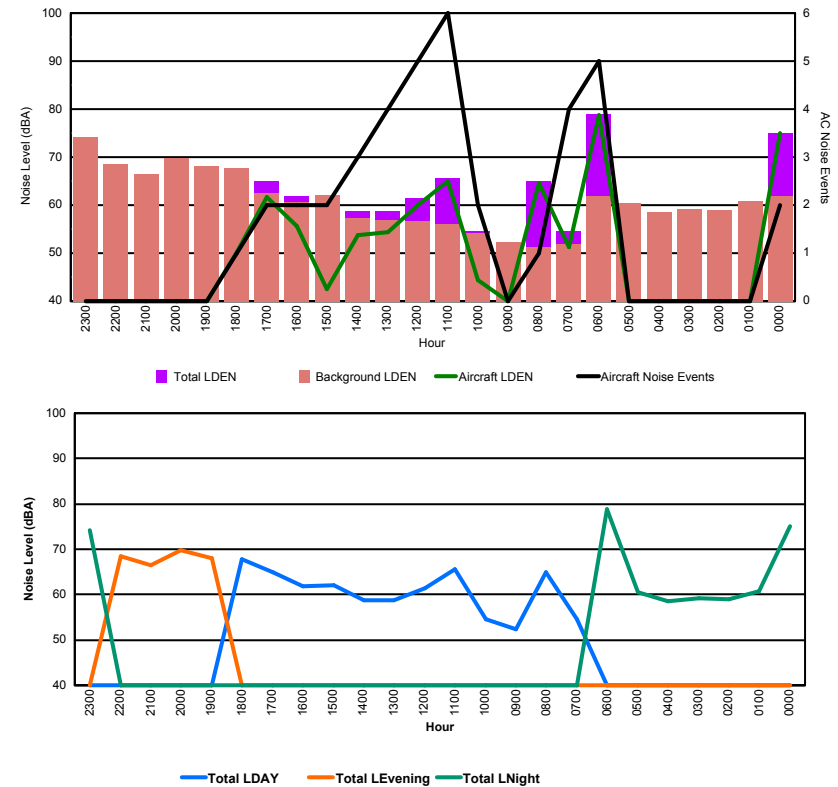


Luxembourg Airport Noise Distribution by Hour

Between 17/01/2016 00:00:00 and 17/01/2016 23:59:59 (Local Time)

Day	Aircraft Events	Total LDEN dB (A)	Aircraft LDEN dB(A)	Background LDEN dB(A)	Total LDay dB(A)	Total LEvening dB(A)	Total LNight dB (A)
17/01/16 0:00	2	75.1	74.9	61.8	-	-	75.1
17/01/16 1:00	-	60.7	-	60.9	-	-	60.7
17/01/16 2:00	-	59.0	-	59.0	-	-	59.0
17/01/16 3:00	-	59.1	-	59.1	-	-	59.1
17/01/16 4:00	-	58.6	-	58.6	-	-	58.6
17/01/16 5:00	-	60.5	-	60.5	-	-	60.5
17/01/16 6:00	5	78.9	78.8	61.8	-	-	78.9
17/01/16 7:00	4	54.5	51.3	51.8	54.5	-	-
17/01/16 8:00	1	64.9	64.6	51.2	64.9	-	-
17/01/16 9:00	-	52.3	-	52.3	52.3	-	-
17/01/16 10:00	2	54.5	44.3	54.2	54.5	-	-
17/01/16 11:00	6	65.6	65.1	56.1	65.6	-	-
17/01/16 12:00	5	61.5	59.9	56.6	61.5	-	-
17/01/16 13:00	4	58.7	54.4	56.8	58.7	-	-
17/01/16 14:00	3	58.8	53.8	57.2	58.8	-	-
17/01/16 15:00	2	62.0	42.5	62.0	62.0	-	-
17/01/16 16:00	2	61.8	55.6	60.6	61.8	-	-
17/01/16 17:00	2	65.0	61.6	62.5	65.0	-	-
17/01/16 18:00	1	67.8	50.2	67.7	67.8	-	-
17/01/16 19:00	-	68.1	-	68.1	-	68.1	-
17/01/16 20:00	-	69.8	-	69.7	-	69.8	-
17/01/16 21:00	-	66.5	-	66.5	-	66.5	-
17/01/16 22:00	-	68.5	-	68.6	-	68.5	-
17/01/16 23:00	-	74.1	-	74.1	-	-	74.1
	39	69.0	69.5	64.9	62.8	68.4	72.4

Location: NDB-Hamm NMT # 4





Luxembourg Airport Noise Distribution by Hour

Between 17/01/2016 00:00:00 and 17/01/2016 23:59:59 (Local Time)

Day	Aircraft Events	Total LDEN dB (A)	Aircraft LDEN dB(A)	Background LDEN dB(A)	Total LDay dB(A)	Total LEvening dB(A)	Total LNight dB (A)
17/01/16 0:00	3	69.5	66.0	68.9	-	-	69.5
17/01/16 1:00	-	66.0	-	67.4	-	-	66.0
17/01/16 2:00	-	65.0	-	66.1	-	-	65.0
17/01/16 3:00	-	65.2	-	65.4	-	-	65.2
17/01/16 4:00	-	64.0	-	64.0	-	-	64.0
17/01/16 5:00	-	65.7	-	65.9	-	-	65.7
17/01/16 6:00	5	71.8	70.7	66.2	-	-	71.8
17/01/16 7:00	3	60.5	45.6	60.8	60.5	-	-
17/01/16 8:00	2	59.8	55.5	58.7	59.8	-	-
17/01/16 9:00	-	57.2	-	57.2	57.2	-	-
17/01/16 10:00	1	58.1	48.6	57.6	58.1	-	-
17/01/16 11:00	4	60.5	56.6	58.5	60.5	-	-
17/01/16 12:00	2	59.2	52.6	58.3	59.2	-	-
17/01/16 13:00	-	58.0	-	58.0	58.0	-	-
17/01/16 14:00	1	58.3	48.0	57.9	58.3	-	-
17/01/16 15:00	2	59.6	54.4	58.1	59.6	-	-
17/01/16 16:00	3	59.6	53.2	58.6	59.6	-	-
17/01/16 17:00	9	61.0	57.3	58.8	61.0	-	-
17/01/16 18:00	9	62.9	60.8	58.8	62.9	-	-
17/01/16 19:00	1	65.1	60.7	63.1	-	65.1	-
17/01/16 20:00	4	66.0	63.1	62.9	-	66.0	-
17/01/16 21:00	3	62.7	55.4	61.9	-	62.7	-
17/01/16 22:00	11	64.2	60.7	62.0	-	64.2	-
17/01/16 23:00	1	68.5	64.1	66.6	-	-	68.5
	64	64.7	61.9	63.3	59.8	64.7	67.8

Location: Gare centrale NMT # 5

