

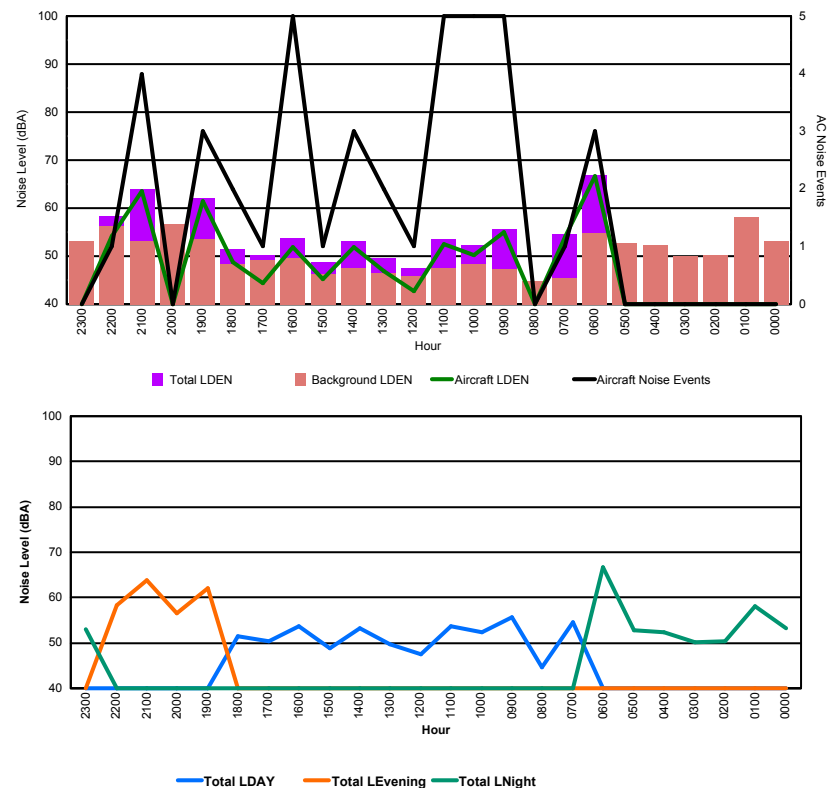


## Luxembourg Airport Noise Distribution by Hour

Between 30/12/2015 00:00:00 and 30/12/2015 23:59:59 (Local Time)

Day	Aircraft Events	Total LDEN dB (A)	Aircraft LDEN dB(A)	Background LDEN dB(A)	Total LDay dB(A)	Total LEvening dB(A)	Total LNight dB (A)
30/12/15 0:00	-	53.2	-	53.2	-	-	53.2
30/12/15 1:00	-	58.0	-	58.1	-	-	58.0
30/12/15 2:00	-	50.3	-	50.3	-	-	50.3
30/12/15 3:00	-	50.1	-	50.1	-	-	50.1
30/12/15 4:00	-	52.3	-	52.3	-	-	52.3
30/12/15 5:00	-	52.7	-	52.7	-	-	52.7
30/12/15 6:00	3	66.8	66.6	54.7	-	-	66.8
30/12/15 7:00	1	54.5	53.9	45.5	54.5	-	-
30/12/15 8:00	-	44.7	-	44.7	44.7	-	-
30/12/15 9:00	5	55.6	54.9	47.2	55.6	-	-
30/12/15 10:00	5	52.3	50.2	48.4	52.3	-	-
30/12/15 11:00	5	53.6	52.5	47.6	53.6	-	-
30/12/15 12:00	1	47.6	42.8	45.9	47.6	-	-
30/12/15 13:00	2	49.6	46.8	46.4	49.6	-	-
30/12/15 14:00	3	53.2	51.9	47.6	53.2	-	-
30/12/15 15:00	1	48.8	45.3	46.2	48.8	-	-
30/12/15 16:00	5	53.7	51.8	49.5	53.7	-	-
30/12/15 17:00	1	50.3	44.3	49.1	50.3	-	-
30/12/15 18:00	2	51.5	48.7	48.3	51.5	-	-
30/12/15 19:00	3	62.1	61.4	53.6	-	62.1	-
30/12/15 20:00	-	56.6	-	56.7	-	56.6	-
30/12/15 21:00	4	63.9	63.6	53.2	-	63.9	-
30/12/15 22:00	1	58.3	54.1	56.3	-	58.3	-
30/12/15 23:00	-	53.1	-	53.1	-	-	53.1
	<b>42</b>	<b>57.5</b>	<b>58.2</b>	<b>52.1</b>	<b>52.2</b>	<b>61.1</b>	<b>59.0</b>

Location: Roodt/Syr NMT # 1



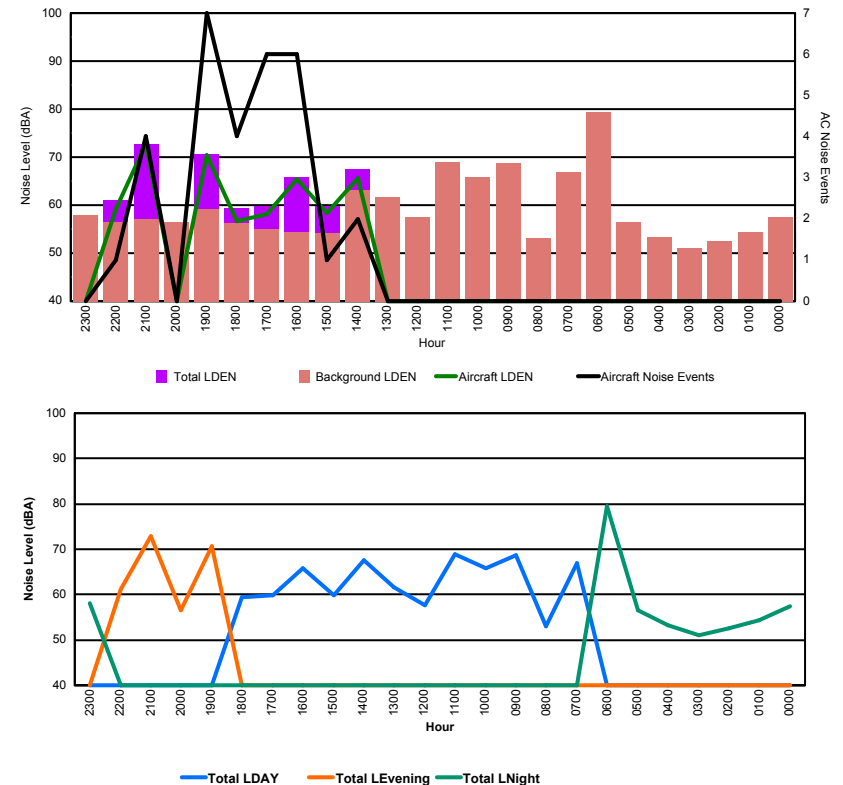


## Luxembourg Airport Noise Distribution by Hour

Between 30/12/2015 00:00:00 and 30/12/2015 23:59:59 (Local Time)

Day	Aircraft Events	Total LDEN dB (A)	Aircraft LDEN dB(A)	Background LDEN dB(A)	Total LDay dB(A)	Total LEvening dB(A)	Total LNight dB (A)
30/12/15 0:00	-	57.4	-	57.4	-	-	57.4
30/12/15 1:00	-	54.4	-	54.4	-	-	54.4
30/12/15 2:00	-	52.5	-	52.5	-	-	52.5
30/12/15 3:00	-	51.0	-	51.0	-	-	51.0
30/12/15 4:00	-	53.3	-	53.3	-	-	53.3
30/12/15 5:00	-	56.5	-	56.5	-	-	56.5
30/12/15 6:00	-	79.4	-	79.4	-	-	79.4
30/12/15 7:00	-	66.9	-	66.9	66.9	-	-
30/12/15 8:00	-	53.1	-	53.1	53.1	-	-
30/12/15 9:00	-	68.7	-	68.7	68.7	-	-
30/12/15 10:00	-	65.8	-	65.8	65.8	-	-
30/12/15 11:00	-	69.0	-	69.0	69.0	-	-
30/12/15 12:00	-	57.6	-	57.6	57.6	-	-
30/12/15 13:00	-	61.6	-	61.7	61.6	-	-
30/12/15 14:00	2	67.6	65.6	63.2	67.6	-	-
30/12/15 15:00	1	59.8	58.4	54.2	59.8	-	-
30/12/15 16:00	6	65.8	65.5	54.4	65.8	-	-
30/12/15 17:00	6	59.8	58.2	54.9	59.8	-	-
30/12/15 18:00	4	59.4	56.6	56.2	59.4	-	-
30/12/15 19:00	7	70.7	70.4	59.1	-	70.7	-
30/12/15 20:00	-	56.5	-	56.5	-	56.5	-
30/12/15 21:00	4	72.8	72.7	57.0	-	72.8	-
30/12/15 22:00	1	61.1	59.2	56.5	-	61.1	-
30/12/15 23:00	-	58.0	-	58.0	-	-	58.0
	<b>31</b>	<b>68.3</b>	<b>66.9</b>	<b>67.0</b>	<b>65.1</b>	<b>69.1</b>	<b>70.5</b>

Location: DVOR NMT # 2



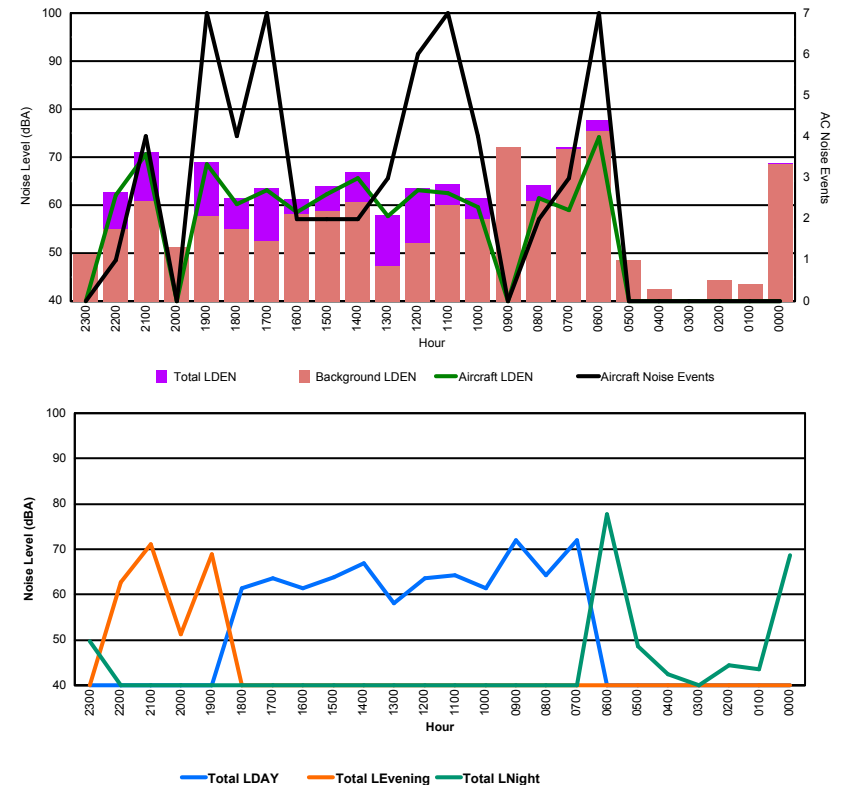


## Luxembourg Airport Noise Distribution by Hour

Between 30/12/2015 00:00:00 and 30/12/2015 23:59:59 (Local Time)

Day	Aircraft Events	Total LDEN dB (A)	Aircraft LDEN dB(A)	Background LDEN dB(A)	Total LDay dB(A)	Total LEvening dB(A)	Total LNight dB (A)
30/12/15 0:00	-	68.7	-	68.6	-	-	68.7
30/12/15 1:00	-	43.5	-	43.5	-	-	43.5
30/12/15 2:00	-	44.4	-	44.4	-	-	44.4
30/12/15 3:00	-	39.4	-	39.4	-	-	39.4
30/12/15 4:00	-	42.4	-	42.4	-	-	42.4
30/12/15 5:00	-	48.5	-	48.5	-	-	48.5
30/12/15 6:00	7	77.8	74.2	75.4	-	-	77.8
30/12/15 7:00	3	72.0	58.9	71.7	72.0	-	-
30/12/15 8:00	2	64.2	61.5	60.9	64.2	-	-
30/12/15 9:00	-	72.1	-	72.1	72.1	-	-
30/12/15 10:00	4	61.4	59.5	57.1	61.4	-	-
30/12/15 11:00	7	64.3	62.4	59.9	64.3	-	-
30/12/15 12:00	6	63.5	63.2	52.1	63.5	-	-
30/12/15 13:00	3	58.0	57.7	47.3	58.0	-	-
30/12/15 14:00	2	66.9	65.7	60.7	66.9	-	-
30/12/15 15:00	2	63.9	62.3	58.7	63.9	-	-
30/12/15 16:00	2	61.3	58.6	58.2	61.3	-	-
30/12/15 17:00	7	63.5	63.2	52.4	63.5	-	-
30/12/15 18:00	4	61.4	60.3	55.0	61.4	-	-
30/12/15 19:00	7	68.9	68.6	57.8	-	68.9	-
30/12/15 20:00	-	51.3	-	51.3	-	51.3	-
30/12/15 21:00	4	71.0	70.6	60.9	-	71.0	-
30/12/15 22:00	1	62.8	62.0	54.9	-	62.8	-
30/12/15 23:00	-	49.8	-	49.8	-	-	49.8
	<b>61</b>	<b>67.8</b>	<b>66.3</b>	<b>65.3</b>	<b>66.5</b>	<b>67.5</b>	<b>69.3</b>

Location: Mid Runway NMT # 3



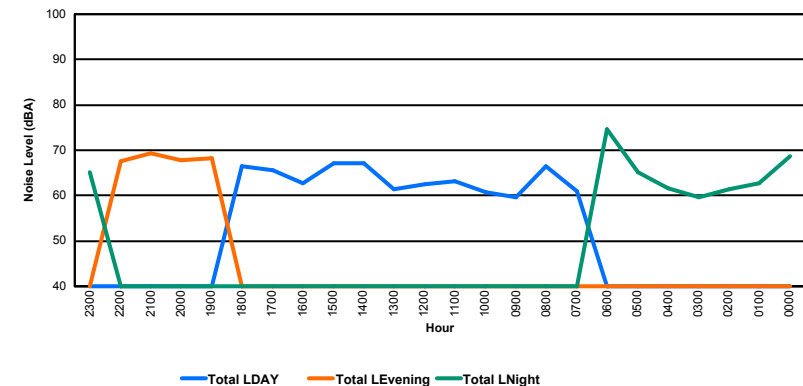
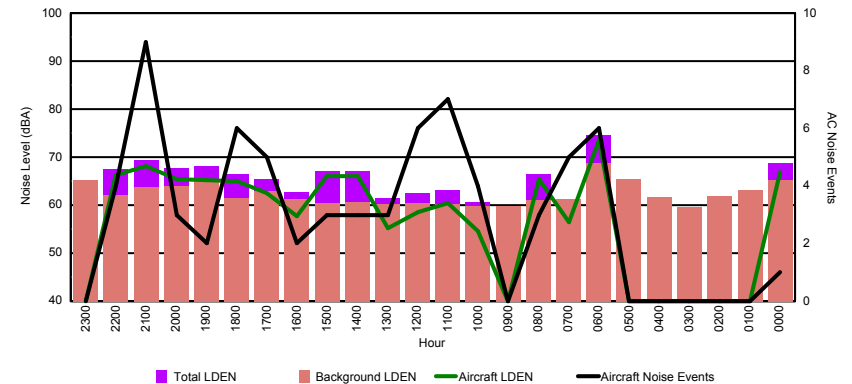


## Luxembourg Airport Noise Distribution by Hour

Between 30/12/2015 00:00:00 and 30/12/2015 23:59:59 (Local Time)

Day	Aircraft Events	Total LDEN dB (A)	Aircraft LDEN dB(A)	Background LDEN dB(A)	Total LDay dB(A)	Total LEvening dB(A)	Total LNight dB (A)
30/12/15 0:00	1	68.7	66.8	65.3	-	-	68.7
30/12/15 1:00	-	62.7	-	63.2	-	-	62.7
30/12/15 2:00	-	61.4	-	61.8	-	-	61.4
30/12/15 3:00	-	59.6	-	59.6	-	-	59.6
30/12/15 4:00	-	61.7	-	61.7	-	-	61.7
30/12/15 5:00	-	65.2	-	65.4	-	-	65.2
30/12/15 6:00	6	74.6	73.6	68.8	-	-	74.6
30/12/15 7:00	5	61.0	56.5	61.2	61.0	-	-
30/12/15 8:00	3	66.4	65.5	61.1	66.4	-	-
30/12/15 9:00	-	59.7	-	59.7	59.7	-	-
30/12/15 10:00	4	60.7	54.5	59.7	60.7	-	-
30/12/15 11:00	7	63.2	60.4	60.3	63.2	-	-
30/12/15 12:00	6	62.5	58.6	60.4	62.5	-	-
30/12/15 13:00	3	61.4	55.2	60.2	61.4	-	-
30/12/15 14:00	3	67.1	66.0	60.6	67.1	-	-
30/12/15 15:00	3	67.1	66.0	60.5	67.1	-	-
30/12/15 16:00	2	62.8	57.8	61.3	62.8	-	-
30/12/15 17:00	5	65.5	62.4	62.9	65.5	-	-
30/12/15 18:00	6	66.5	65.0	61.5	66.5	-	-
30/12/15 19:00	2	68.2	65.2	65.1	-	68.2	-
30/12/15 20:00	3	67.8	65.5	63.9	-	67.8	-
30/12/15 21:00	9	69.4	68.1	63.7	-	69.4	-
30/12/15 22:00	4	67.6	66.2	62.1	-	67.6	-
30/12/15 23:00	-	65.2	-	65.2	-	-	65.2
	<b>72</b>	<b>66.6</b>	<b>65.8</b>	<b>63.0</b>	<b>64.4</b>	<b>68.3</b>	<b>67.8</b>

Location: NDB-Hamm NMT # 4



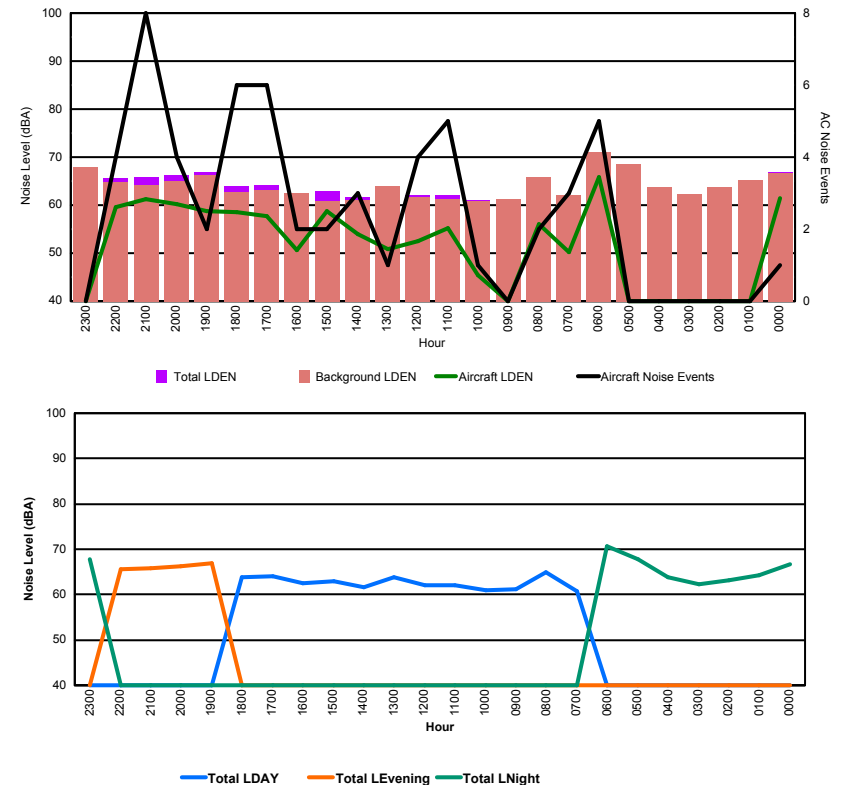


## Luxembourg Airport Noise Distribution by Hour

Between 30/12/2015 00:00:00 and 30/12/2015 23:59:59 (Local Time)

Day	Aircraft Events	Total LDEN dB (A)	Aircraft LDEN dB(A)	Background LDEN dB(A)	Total LDay dB(A)	Total LEvening dB(A)	Total LNight dB (A)
30/12/15 0:00	1	66.8	61.5	66.7	-	-	66.8
30/12/15 1:00	-	64.3	-	65.2	-	-	64.3
30/12/15 2:00	-	63.2	-	63.7	-	-	63.2
30/12/15 3:00	-	62.2	-	62.2	-	-	62.2
30/12/15 4:00	-	63.8	-	63.8	-	-	63.8
30/12/15 5:00	-	67.7	-	68.6	-	-	67.7
30/12/15 6:00	5	70.7	65.8	71.0	-	-	70.7
30/12/15 7:00	3	60.8	50.2	62.1	60.8	-	-
30/12/15 8:00	2	65.0	56.1	65.9	65.0	-	-
30/12/15 9:00	-	61.2	-	61.2	61.2	-	-
30/12/15 10:00	1	61.0	45.5	60.9	61.0	-	-
30/12/15 11:00	5	62.1	55.2	61.2	62.1	-	-
30/12/15 12:00	4	62.0	52.5	61.6	62.0	-	-
30/12/15 13:00	1	63.9	50.8	63.9	63.9	-	-
30/12/15 14:00	3	61.7	53.9	61.0	61.7	-	-
30/12/15 15:00	2	62.9	58.7	60.8	62.9	-	-
30/12/15 16:00	2	62.6	50.7	62.5	62.6	-	-
30/12/15 17:00	6	64.1	57.7	63.2	64.1	-	-
30/12/15 18:00	6	63.9	58.6	62.7	63.9	-	-
30/12/15 19:00	2	66.9	58.8	66.3	-	66.9	-
30/12/15 20:00	4	66.2	60.3	65.0	-	66.2	-
30/12/15 21:00	8	65.8	61.2	64.2	-	65.8	-
30/12/15 22:00	4	65.7	59.5	64.7	-	65.7	-
30/12/15 23:00	-	67.9	-	67.9	-	-	67.9
	<b>59</b>	<b>65.1</b>	<b>58.8</b>	<b>64.9</b>	<b>62.8</b>	<b>66.2</b>	<b>66.7</b>

Location: Gare centrale NMT # 5



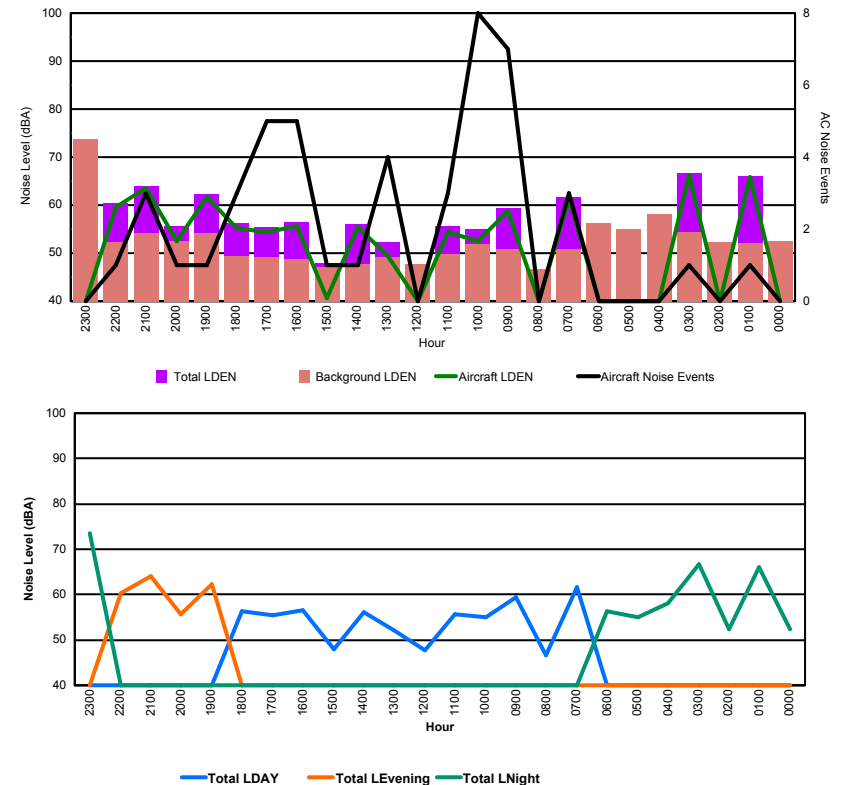


## Luxembourg Airport Noise Distribution by Hour

Between 31/12/2015 00:00:00 and 31/12/2015 23:59:59 (Local Time)

Day	Aircraft Events	Total LDEN dB (A)	Aircraft LDEN dB(A)	Background LDEN dB(A)	Total LDay dB(A)	Total LEvening dB(A)	Total LNight dB (A)
31/12/15 0:00	-	52.4	-	52.4	-	-	52.4
31/12/15 1:00	1	66.1	65.9	52.1	-	-	66.1
31/12/15 2:00	-	52.3	-	52.3	-	-	52.3
31/12/15 3:00	1	66.6	66.3	54.3	-	-	66.6
31/12/15 4:00	-	58.1	-	58.1	-	-	58.1
31/12/15 5:00	-	55.1	-	55.1	-	-	55.1
31/12/15 6:00	-	56.3	-	56.3	-	-	56.3
31/12/15 7:00	3	61.6	61.2	50.9	61.6	-	-
31/12/15 8:00	-	46.6	-	46.6	46.6	-	-
31/12/15 9:00	7	59.4	58.8	50.8	59.4	-	-
31/12/15 10:00	8	55.0	52.4	51.8	55.0	-	-
31/12/15 11:00	3	55.6	54.3	49.7	55.6	-	-
31/12/15 12:00	-	47.8	-	47.8	47.8	-	-
31/12/15 13:00	4	52.2	49.4	49.2	52.2	-	-
31/12/15 14:00	1	56.1	55.4	47.7	56.1	-	-
31/12/15 15:00	1	48.0	40.7	47.1	48.0	-	-
31/12/15 16:00	5	56.5	55.7	48.8	56.5	-	-
31/12/15 17:00	5	55.4	54.3	49.1	55.4	-	-
31/12/15 18:00	3	56.3	55.3	49.4	56.3	-	-
31/12/15 19:00	1	62.3	61.6	54.2	-	62.3	-
31/12/15 20:00	1	55.6	52.6	52.5	-	55.6	-
31/12/15 21:00	3	64.0	63.6	54.2	-	64.0	-
31/12/15 22:00	1	60.4	59.6	52.3	-	60.4	-
31/12/15 23:00	-	73.6	-	73.7	-	-	73.6
	<b>48</b>	<b>62.6</b>	<b>60.2</b>	<b>60.6</b>	<b>56.2</b>	<b>61.5</b>	<b>66.2</b>

Location: Roodt/Syr NMT # 1



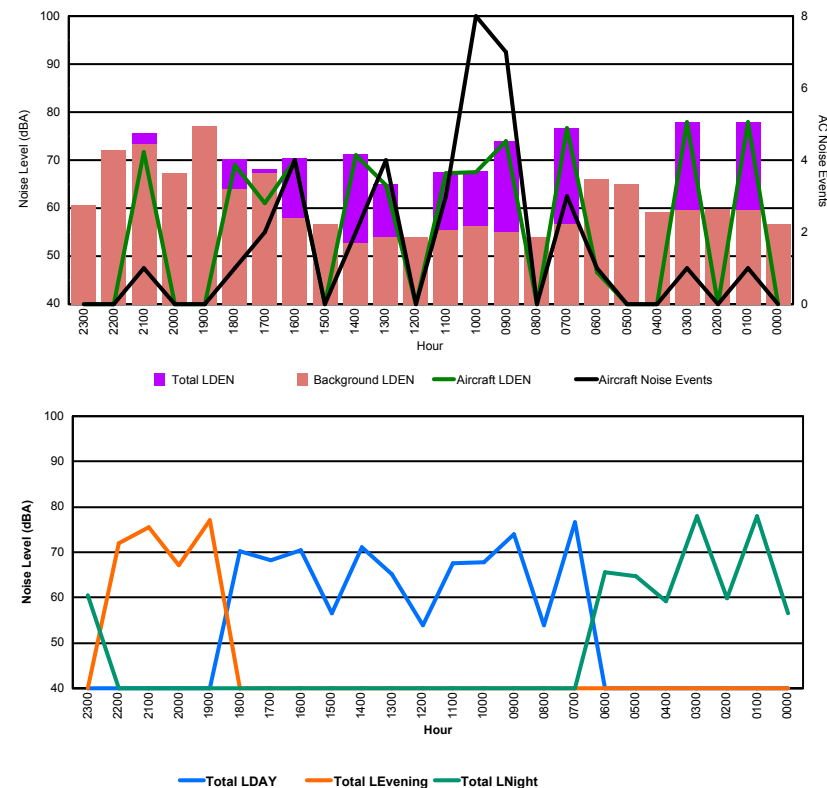


## Luxembourg Airport Noise Distribution by Hour

Between 31/12/2015 00:00:00 and 31/12/2015 23:59:59 (Local Time)

Day	Aircraft Events	Total LDEN dB (A)	Aircraft LDEN dB(A)	Background LDEN dB(A)	Total LDay dB(A)	Total LEvening dB(A)	Total LNight dB (A)
31/12/15 0:00	-	56.6	-	56.6	-	-	56.6
31/12/15 1:00	1	78.0	77.9	59.6	-	-	78.0
31/12/15 2:00	-	59.8	-	59.8	-	-	59.8
31/12/15 3:00	1	78.0	77.9	59.6	-	-	78.0
31/12/15 4:00	-	59.1	-	59.2	-	-	59.1
31/12/15 5:00	-	64.7	-	64.9	-	-	64.7
31/12/15 6:00	1	65.7	46.7	66.0	-	-	65.7
31/12/15 7:00	3	76.7	76.7	56.6	76.7	-	-
31/12/15 8:00	-	53.9	-	53.9	53.9	-	-
31/12/15 9:00	7	73.9	73.9	55.0	73.9	-	-
31/12/15 10:00	8	67.8	67.4	56.2	67.8	-	-
31/12/15 11:00	3	67.5	67.2	55.4	67.5	-	-
31/12/15 12:00	-	53.9	-	53.9	53.9	-	-
31/12/15 13:00	4	65.1	64.8	53.9	65.1	-	-
31/12/15 14:00	2	71.2	71.1	52.7	71.2	-	-
31/12/15 15:00	-	56.5	-	56.6	56.5	-	-
31/12/15 16:00	4	70.4	70.1	58.0	70.4	-	-
31/12/15 17:00	2	68.2	61.1	67.2	68.2	-	-
31/12/15 18:00	1	70.2	69.0	64.0	70.2	-	-
31/12/15 19:00	-	77.1	-	77.0	-	77.1	-
31/12/15 20:00	-	67.2	-	67.2	-	67.2	-
31/12/15 21:00	1	75.6	71.7	73.3	-	75.6	-
31/12/15 22:00	-	72.0	-	72.0	-	72.0	-
31/12/15 23:00	-	60.6	-	60.6	-	-	60.6
	<b>38</b>	<b>71.9</b>	<b>72.9</b>	<b>66.8</b>	<b>70.3</b>	<b>74.3</b>	<b>72.3</b>

Location: DVOR NMT # 2



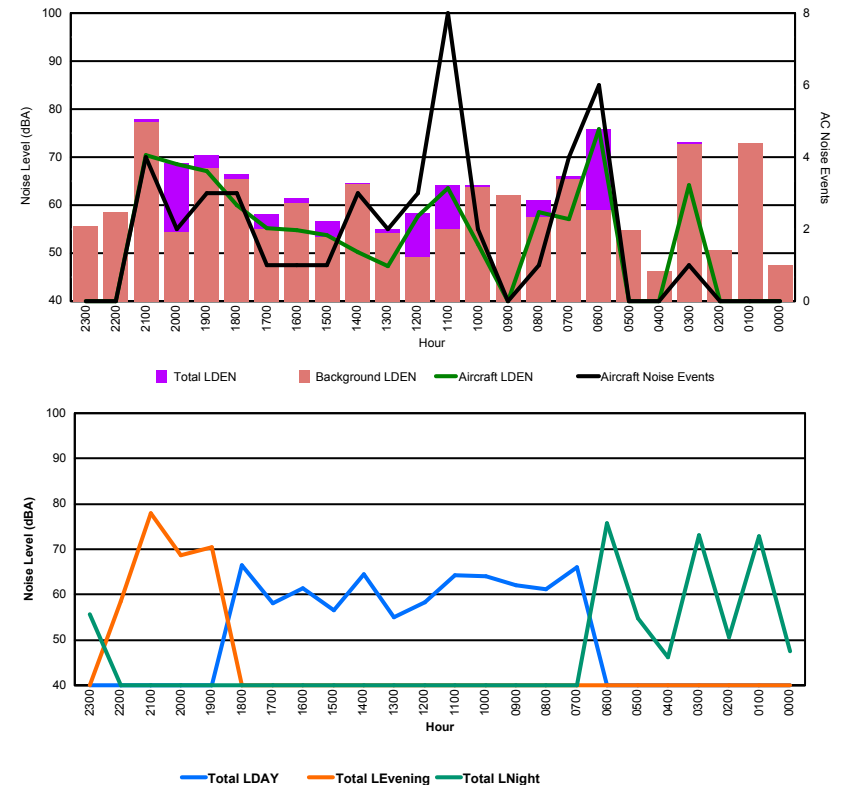


## Luxembourg Airport Noise Distribution by Hour

Between 31/12/2015 00:00:00 and 31/12/2015 23:59:59 (Local Time)

Day	Aircraft Events	Total LDEN dB (A)	Aircraft LDEN dB(A)	Background LDEN dB(A)	Total LDay dB(A)	Total LEvening dB(A)	Total LNight dB (A)
31/12/15 0:00	-	47.4	-	47.5	-	-	47.4
31/12/15 1:00	-	72.9	-	73.0	-	-	72.9
31/12/15 2:00	-	50.6	-	50.6	-	-	50.6
31/12/15 3:00	1	73.2	64.2	72.7	-	-	73.2
31/12/15 4:00	-	46.2	-	46.2	-	-	46.2
31/12/15 5:00	-	54.7	-	54.7	-	-	54.7
31/12/15 6:00	6	75.8	75.8	58.9	-	-	75.8
31/12/15 7:00	4	66.1	57.0	65.5	66.1	-	-
31/12/15 8:00	1	61.1	58.5	57.6	61.1	-	-
31/12/15 9:00	-	62.0	-	62.0	62.0	-	-
31/12/15 10:00	2	64.1	51.8	63.8	64.1	-	-
31/12/15 11:00	8	64.2	63.6	55.1	64.2	-	-
31/12/15 12:00	3	58.4	57.8	49.1	58.4	-	-
31/12/15 13:00	2	54.9	47.2	54.1	54.9	-	-
31/12/15 14:00	3	64.6	50.2	64.4	64.6	-	-
31/12/15 15:00	1	56.6	53.8	53.4	56.6	-	-
31/12/15 16:00	1	61.4	54.8	60.4	61.4	-	-
31/12/15 17:00	1	58.1	55.3	55.0	58.1	-	-
31/12/15 18:00	3	66.5	59.9	65.4	66.5	-	-
31/12/15 19:00	3	70.4	67.0	67.7	-	70.4	-
31/12/15 20:00	2	68.7	68.5	54.3	-	68.7	-
31/12/15 21:00	4	78.0	70.4	77.2	-	78.0	-
31/12/15 22:00	-	58.6	-	58.6	-	58.6	-
31/12/15 23:00	-	55.6	-	55.6	-	-	55.6
	<b>45</b>	<b>68.9</b>	<b>66.4</b>	<b>66.9</b>	<b>62.8</b>	<b>73.1</b>	<b>70.0</b>

Location: Mid Runway NMT # 3





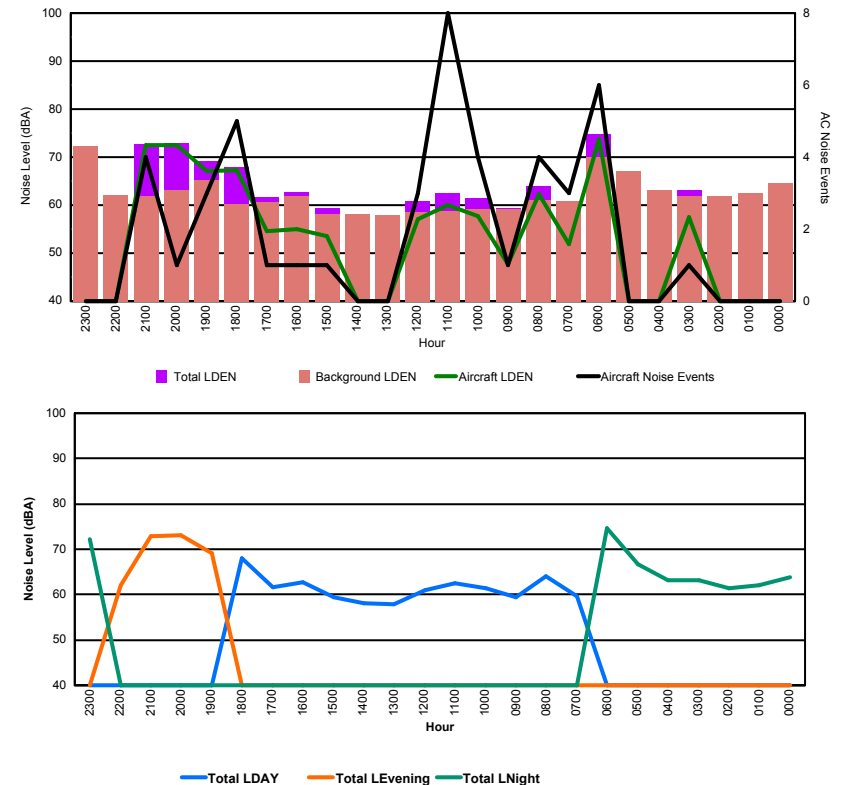


## Luxembourg Airport Noise Distribution by Hour

Between 31/12/2015 00:00:00 and 31/12/2015 23:59:59 (Local Time)

Day	Aircraft Events	Total LDEN dB (A)	Aircraft LDEN dB(A)	Background LDEN dB(A)	Total LDay dB(A)	Total LEvening dB(A)	Total LNight dB (A)
31/12/15 0:00	-	63.8	-	64.6	-	-	63.8
31/12/15 1:00	-	62.0	-	62.5	-	-	62.0
31/12/15 2:00	-	61.5	-	61.9	-	-	61.5
31/12/15 3:00	1	63.1	57.4	61.8	-	-	63.1
31/12/15 4:00	-	63.2	-	63.2	-	-	63.2
31/12/15 5:00	-	66.6	-	67.0	-	-	66.6
31/12/15 6:00	6	74.7	73.7	70.0	-	-	74.7
31/12/15 7:00	3	59.6	51.9	60.9	59.6	-	-
31/12/15 8:00	4	64.0	62.3	61.0	64.0	-	-
31/12/15 9:00	1	59.4	47.8	59.1	59.4	-	-
31/12/15 10:00	4	61.4	57.8	59.1	61.4	-	-
31/12/15 11:00	8	62.4	60.1	58.8	62.4	-	-
31/12/15 12:00	3	60.9	57.0	58.6	60.9	-	-
31/12/15 13:00	-	57.9	-	57.9	57.9	-	-
31/12/15 14:00	-	58.1	-	58.1	58.1	-	-
31/12/15 15:00	1	59.4	53.5	58.1	59.4	-	-
31/12/15 16:00	1	62.7	55.0	61.9	62.7	-	-
31/12/15 17:00	1	61.6	54.6	60.7	61.6	-	-
31/12/15 18:00	5	68.0	67.2	60.3	68.0	-	-
31/12/15 19:00	3	69.2	67.0	65.3	-	69.2	-
31/12/15 20:00	1	73.0	72.4	63.1	-	73.0	-
31/12/15 21:00	4	72.8	72.4	61.9	-	72.8	-
31/12/15 22:00	-	62.1	-	62.1	-	62.1	-
31/12/15 23:00	-	72.3	-	72.2	-	-	72.3
	<b>46</b>	<b>67.3</b>	<b>66.9</b>	<b>64.1</b>	<b>62.3</b>	<b>70.9</b>	<b>68.8</b>

Location: NDB-Hamm NMT # 4



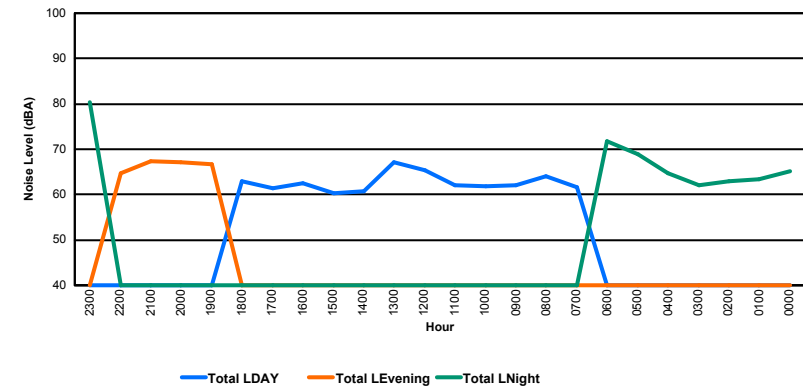
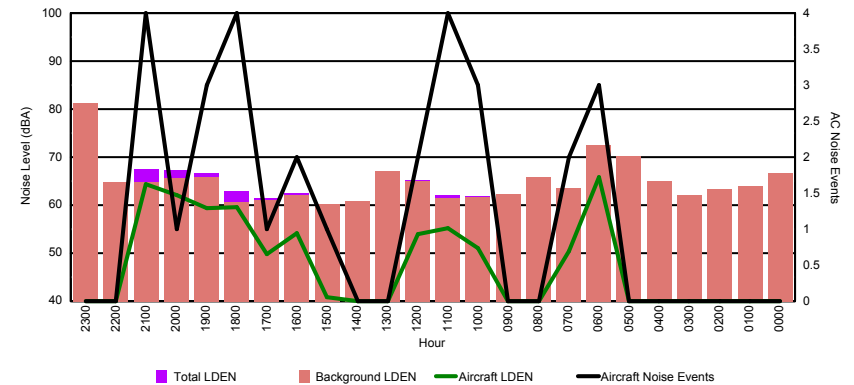


## Luxembourg Airport Noise Distribution by Hour

Between 31/12/2015 00:00:00 and 31/12/2015 23:59:59 (Local Time)

Day	Aircraft Events	Total LDEN dB (A)	Aircraft LDEN dB(A)	Background LDEN dB(A)	Total LDay dB(A)	Total LEvening dB(A)	Total LNight dB (A)
31/12/15 0:00	-	65.2	-	66.6	-	-	65.2
31/12/15 1:00	-	63.4	-	64.0	-	-	63.4
31/12/15 2:00	-	62.9	-	63.4	-	-	62.9
31/12/15 3:00	-	62.1	-	62.1	-	-	62.1
31/12/15 4:00	-	64.7	-	64.9	-	-	64.7
31/12/15 5:00	-	69.0	-	70.2	-	-	69.0
31/12/15 6:00	3	71.8	65.8	72.6	-	-	71.8
31/12/15 7:00	2	61.6	50.4	63.5	61.6	-	-
31/12/15 8:00	-	64.0	-	65.9	64.0	-	-
31/12/15 9:00	-	62.1	-	62.2	62.1	-	-
31/12/15 10:00	3	61.8	51.1	61.6	61.8	-	-
31/12/15 11:00	4	62.1	55.2	61.4	62.1	-	-
31/12/15 12:00	2	65.3	54.0	65.0	65.3	-	-
31/12/15 13:00	-	67.1	-	67.1	67.1	-	-
31/12/15 14:00	-	60.7	-	60.8	60.7	-	-
31/12/15 15:00	1	60.2	40.8	60.2	60.2	-	-
31/12/15 16:00	2	62.5	54.1	62.0	62.5	-	-
31/12/15 17:00	1	61.4	49.8	61.1	61.4	-	-
31/12/15 18:00	4	63.0	59.6	60.7	63.0	-	-
31/12/15 19:00	3	66.6	59.4	65.8	-	66.6	-
31/12/15 20:00	1	67.2	62.0	65.7	-	67.2	-
31/12/15 21:00	4	67.4	64.3	64.8	-	67.4	-
31/12/15 22:00	-	64.7	-	64.8	-	64.7	-
31/12/15 23:00	-	80.3	-	81.3	-	-	80.3
	<b>30</b>	<b>68.9</b>	<b>59.6</b>	<b>69.5</b>	<b>63.1</b>	<b>66.6</b>	<b>72.5</b>

Location: Gare centrale NMT # 5



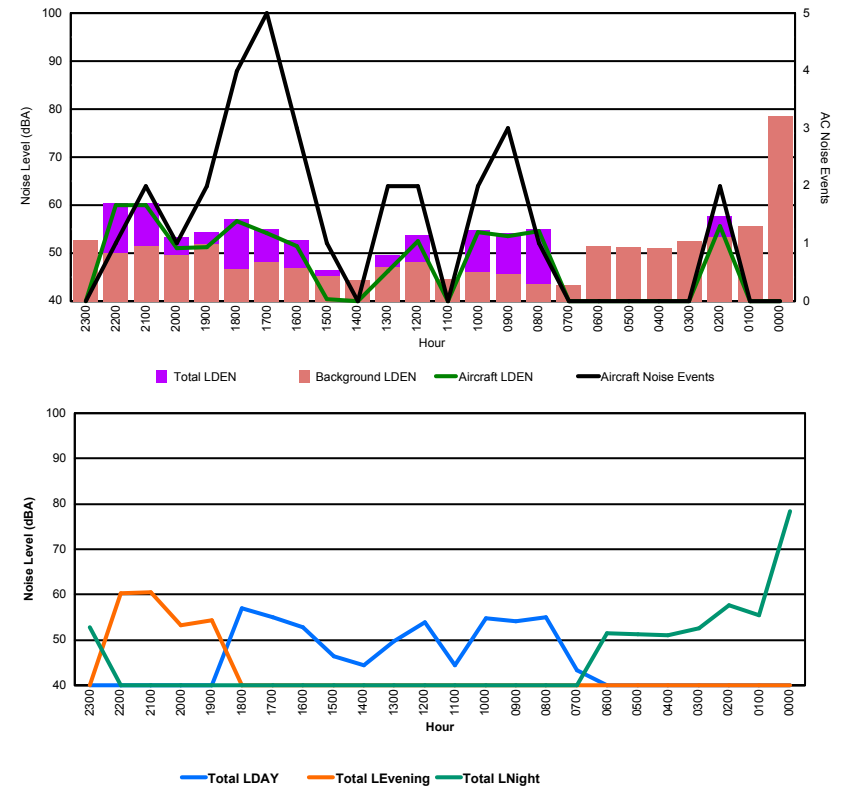


## Luxembourg Airport Noise Distribution by Hour

Between 01/01/2016 00:00:00 and 01/01/2016 23:59:59 (Local Time)

Day	Aircraft Events	Total LDEN dB (A)	Aircraft LDEN dB(A)	Background LDEN dB(A)	Total LDay dB(A)	Total LEvening dB(A)	Total LNight dB (A)
01/01/16 0:00	-	78.4	-	78.5	-	-	78.4
01/01/16 1:00	-	55.5	-	55.6	-	-	55.5
01/01/16 2:00	2	57.7	55.7	53.3	-	-	57.7
01/01/16 3:00	-	52.5	-	52.5	-	-	52.5
01/01/16 4:00	-	51.0	-	51.0	-	-	51.0
01/01/16 5:00	-	51.3	-	51.3	-	-	51.3
01/01/16 6:00	-	51.5	-	51.5	-	-	51.5
01/01/16 7:00	-	43.3	-	43.3	43.3	-	-
01/01/16 8:00	1	54.9	54.6	43.6	54.9	-	-
01/01/16 9:00	3	54.1	53.5	45.7	54.1	-	-
01/01/16 10:00	2	54.8	54.3	46.0	54.8	-	-
01/01/16 11:00	-	44.5	-	44.5	44.5	-	-
01/01/16 12:00	2	53.8	52.5	48.1	53.8	-	-
01/01/16 13:00	2	49.6	46.3	47.0	49.6	-	-
01/01/16 14:00	-	44.4	-	44.4	44.4	-	-
01/01/16 15:00	1	46.5	40.5	45.3	46.5	-	-
01/01/16 16:00	3	52.8	51.5	46.9	52.8	-	-
01/01/16 17:00	5	55.1	54.2	48.1	55.1	-	-
01/01/16 18:00	4	57.0	56.6	46.7	57.0	-	-
01/01/16 19:00	2	54.4	51.2	51.8	-	54.4	-
01/01/16 20:00	1	53.3	51.0	49.5	-	53.3	-
01/01/16 21:00	2	60.5	60.0	51.5	-	60.5	-
01/01/16 22:00	1	60.4	60.0	50.0	-	60.4	-
01/01/16 23:00	-	52.8	-	52.8	-	-	52.8
	<b>31</b>	<b>65.0</b>	<b>55.1</b>	<b>64.8</b>	<b>52.9</b>	<b>58.3</b>	<b>69.5</b>

Location: Roodt/Syr NMT # 1



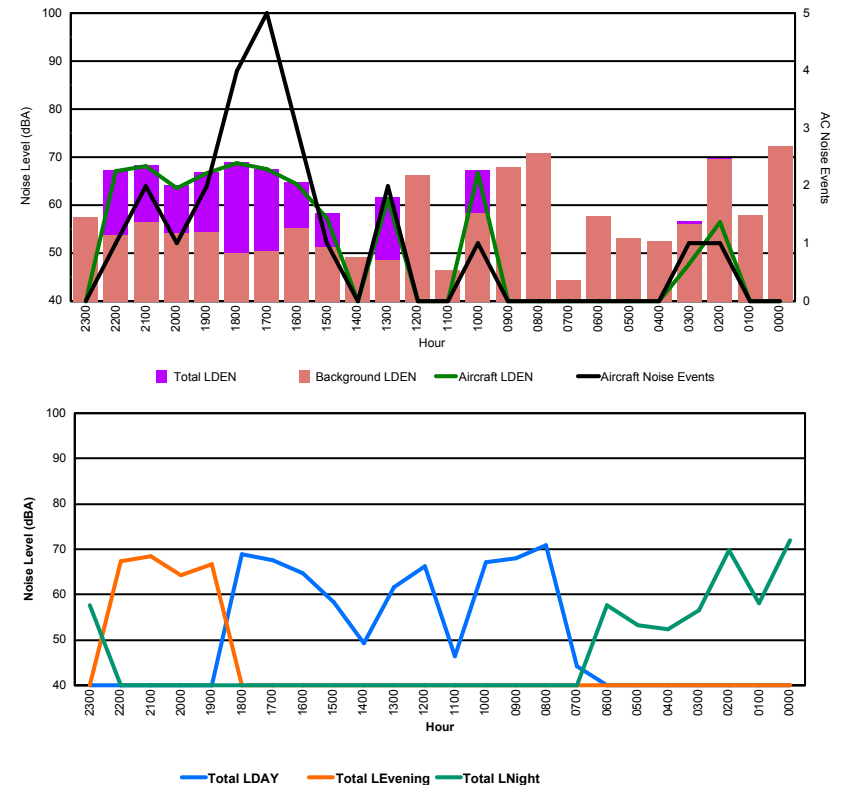


## Luxembourg Airport Noise Distribution by Hour

Between 01/01/2016 00:00:00 and 01/01/2016 23:59:59 (Local Time)

Day	Aircraft Events	Total LDEN dB (A)	Aircraft LDEN dB(A)	Background LDEN dB(A)	Total LDay dB(A)	Total LEvening dB(A)	Total LNight dB (A)
01/01/16 0:00	-	72.1	-	72.3	-	-	72.1
01/01/16 1:00	-	58.0	-	58.0	-	-	58.0
01/01/16 2:00	1	69.8	56.5	69.6	-	-	69.8
01/01/16 3:00	1	56.6	47.7	56.0	-	-	56.6
01/01/16 4:00	-	52.4	-	52.4	-	-	52.4
01/01/16 5:00	-	53.2	-	53.2	-	-	53.2
01/01/16 6:00	-	57.7	-	57.7	-	-	57.7
01/01/16 7:00	-	44.3	-	44.3	44.3	-	-
01/01/16 8:00	-	70.8	-	70.8	70.8	-	-
01/01/16 9:00	-	68.0	-	68.0	68.0	-	-
01/01/16 10:00	1	67.2	66.6	58.3	67.2	-	-
01/01/16 11:00	-	46.5	-	46.5	46.5	-	-
01/01/16 12:00	-	66.3	-	66.3	66.3	-	-
01/01/16 13:00	2	61.6	61.3	48.5	61.6	-	-
01/01/16 14:00	-	49.2	-	49.2	49.2	-	-
01/01/16 15:00	1	58.3	57.3	51.3	58.3	-	-
01/01/16 16:00	3	64.8	64.3	55.2	64.8	-	-
01/01/16 17:00	5	67.6	67.4	50.5	67.6	-	-
01/01/16 18:00	4	68.9	68.8	50.0	68.9	-	-
01/01/16 19:00	2	66.8	66.6	54.3	-	66.8	-
01/01/16 20:00	1	64.2	63.6	54.1	-	64.2	-
01/01/16 21:00	2	68.4	68.1	56.5	-	68.4	-
01/01/16 22:00	1	67.3	67.1	53.8	-	67.3	-
01/01/16 23:00	-	57.6	-	57.6	-	-	57.6
	<b>24</b>	<b>66.0</b>	<b>65.4</b>	<b>63.5</b>	<b>65.9</b>	<b>66.9</b>	<b>65.5</b>

Location: DVOR NMT # 2



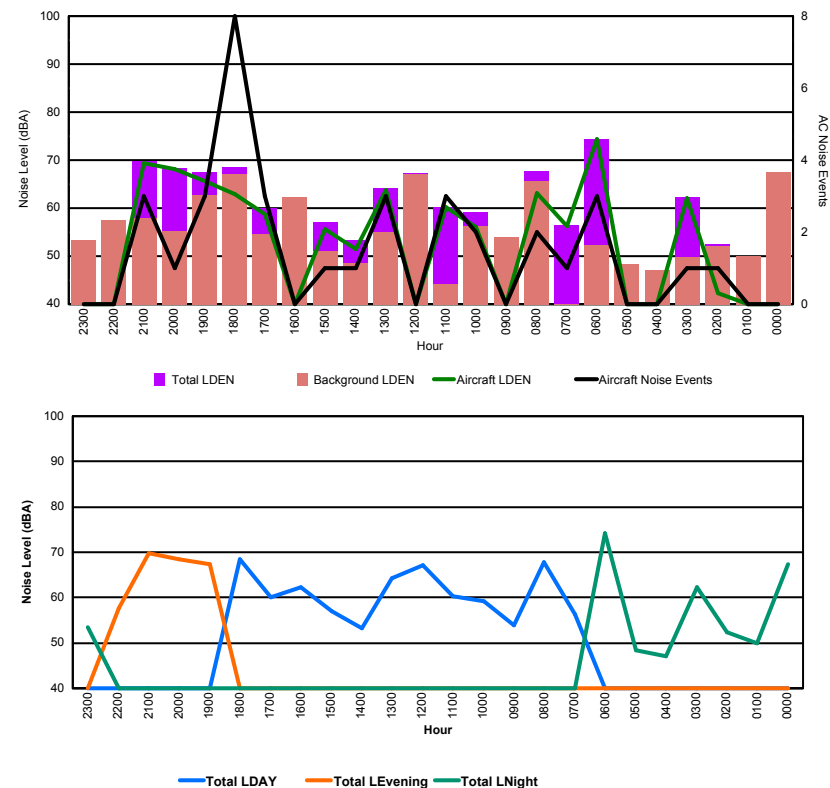


## Luxembourg Airport Noise Distribution by Hour

Between 01/01/2016 00:00:00 and 01/01/2016 23:59:59 (Local Time)

Day	Aircraft Events	Total LDEN dB (A)	Aircraft LDEN dB(A)	Background LDEN dB(A)	Total LDay dB(A)	Total LEvening dB(A)	Total LNight dB (A)
01/01/16 0:00	-	67.3	-	67.4	-	-	67.3
01/01/16 1:00	-	50.0	-	50.0	-	-	50.0
01/01/16 2:00	1	52.4	42.3	52.0	-	-	52.4
01/01/16 3:00	1	62.3	62.0	49.8	-	-	62.3
01/01/16 4:00	-	47.1	-	47.1	-	-	47.1
01/01/16 5:00	-	48.3	-	48.3	-	-	48.3
01/01/16 6:00	3	74.3	74.3	52.3	-	-	74.3
01/01/16 7:00	1	56.4	56.3	38.9	56.4	-	-
01/01/16 8:00	2	67.7	63.1	65.7	67.7	-	-
01/01/16 9:00	-	54.0	-	54.0	54.0	-	-
01/01/16 10:00	2	59.2	56.1	56.2	59.2	-	-
01/01/16 11:00	3	60.3	60.2	44.1	60.3	-	-
01/01/16 12:00	-	67.2	-	67.1	67.2	-	-
01/01/16 13:00	3	64.2	63.7	55.0	64.2	-	-
01/01/16 14:00	1	53.3	51.5	48.5	53.3	-	-
01/01/16 15:00	1	57.0	55.6	51.1	57.0	-	-
01/01/16 16:00	-	62.2	-	62.3	62.2	-	-
01/01/16 17:00	3	60.1	58.7	54.6	60.1	-	-
01/01/16 18:00	8	68.5	62.9	67.1	68.5	-	-
01/01/16 19:00	3	67.4	65.6	62.7	-	67.4	-
01/01/16 20:00	1	68.4	68.1	55.2	-	68.4	-
01/01/16 21:00	3	69.7	69.3	58.0	-	69.7	-
01/01/16 22:00	-	57.6	-	57.6	-	57.6	-
01/01/16 23:00	-	53.4	-	53.4	-	-	53.4
	<b>36</b>	<b>65.4</b>	<b>65.8</b>	<b>60.5</b>	<b>63.5</b>	<b>67.5</b>	<b>66.4</b>

Location: Mid Runway NMT # 3



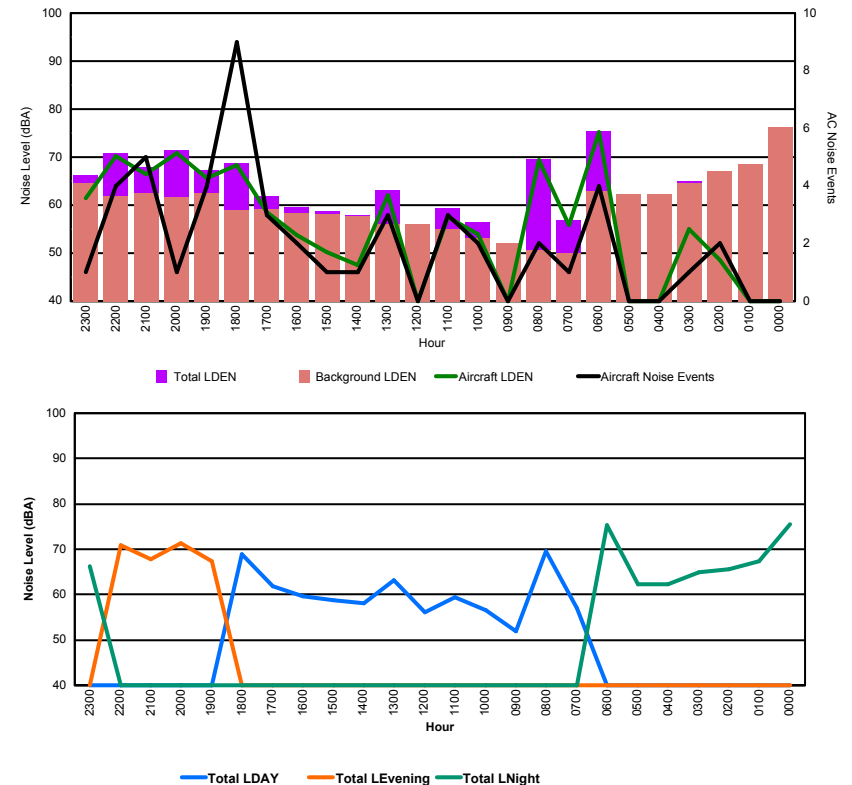


## Luxembourg Airport Noise Distribution by Hour

Between 01/01/2016 00:00:00 and 01/01/2016 23:59:59 (Local Time)

Day	Aircraft Events	Total LDEN dB (A)	Aircraft LDEN dB(A)	Background LDEN dB(A)	Total LDay dB(A)	Total LEvening dB(A)	Total LNight dB (A)
01/01/16 0:00	-	75.6	-	76.2	-	-	75.6
01/01/16 1:00	-	67.4	-	68.5	-	-	67.4
01/01/16 2:00	2	65.5	48.5	67.0	-	-	65.5
01/01/16 3:00	1	65.0	54.9	64.6	-	-	65.0
01/01/16 4:00	-	62.3	-	62.3	-	-	62.3
01/01/16 5:00	-	62.2	-	62.2	-	-	62.2
01/01/16 6:00	4	75.4	75.2	63.0	-	-	75.4
01/01/16 7:00	1	56.9	55.9	49.9	56.9	-	-
01/01/16 8:00	2	69.5	69.4	50.7	69.5	-	-
01/01/16 9:00	-	52.0	-	52.0	52.0	-	-
01/01/16 10:00	2	56.5	54.0	53.1	56.5	-	-
01/01/16 11:00	3	59.4	57.5	55.0	59.4	-	-
01/01/16 12:00	-	56.0	-	56.0	56.0	-	-
01/01/16 13:00	3	63.1	62.1	56.0	63.1	-	-
01/01/16 14:00	1	58.0	47.4	57.7	58.0	-	-
01/01/16 15:00	1	58.7	50.2	58.1	58.7	-	-
01/01/16 16:00	2	59.6	53.8	58.3	59.6	-	-
01/01/16 17:00	3	61.8	58.6	59.1	61.8	-	-
01/01/16 18:00	9	68.8	68.3	58.9	68.8	-	-
01/01/16 19:00	4	67.3	65.6	62.6	-	67.3	-
01/01/16 20:00	1	71.4	70.9	61.7	-	71.4	-
01/01/16 21:00	5	67.9	66.5	62.6	-	67.9	-
01/01/16 22:00	4	70.8	70.2	61.9	-	70.8	-
01/01/16 23:00	1	66.2	61.4	64.5	-	-	66.2
	<b>49</b>	<b>68.0</b>	<b>66.7</b>	<b>65.0</b>	<b>63.1</b>	<b>69.7</b>	<b>70.5</b>

Location: NDB-Hamm NMT # 4



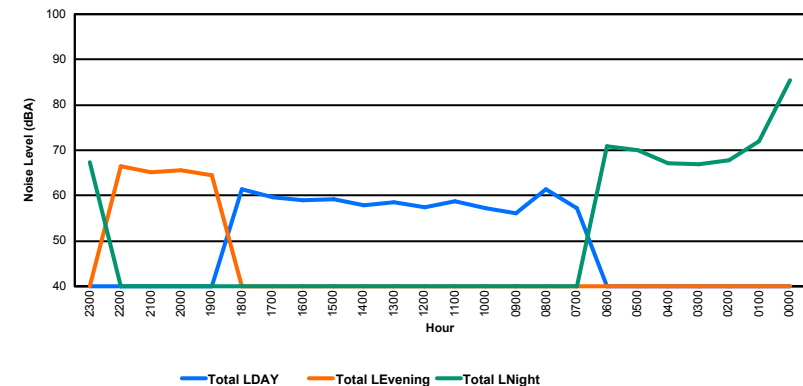
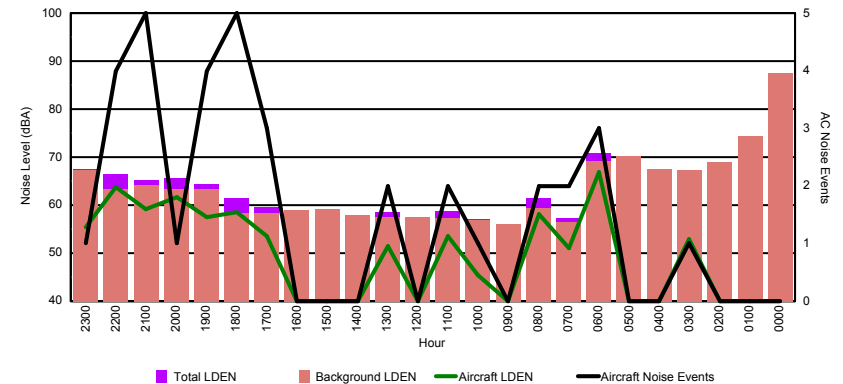


## Luxembourg Airport Noise Distribution by Hour

Between 01/01/2016 00:00:00 and 01/01/2016 23:59:59 (Local Time)

Day	Aircraft Events	Total LDEN dB (A)	Aircraft LDEN dB(A)	Background LDEN dB(A)	Total LDay dB(A)	Total LEvening dB(A)	Total LNight dB (A)
01/01/16 0:00	-	85.5	-	87.4	-	-	85.5
01/01/16 1:00	-	72.0	-	74.3	-	-	72.0
01/01/16 2:00	-	67.8	-	69.0	-	-	67.8
01/01/16 3:00	1	66.9	52.9	67.2	-	-	66.9
01/01/16 4:00	-	67.2	-	67.4	-	-	67.2
01/01/16 5:00	-	70.0	-	70.2	-	-	70.0
01/01/16 6:00	3	70.9	66.9	69.2	-	-	70.9
01/01/16 7:00	2	57.3	51.0	56.5	57.3	-	-
01/01/16 8:00	2	61.5	58.2	59.4	61.5	-	-
01/01/16 9:00	-	56.1	-	56.1	56.1	-	-
01/01/16 10:00	1	57.1	45.4	56.8	57.1	-	-
01/01/16 11:00	2	58.8	53.6	57.3	58.8	-	-
01/01/16 12:00	-	57.4	-	57.4	57.4	-	-
01/01/16 13:00	2	58.5	51.5	57.6	58.5	-	-
01/01/16 14:00	-	57.9	-	57.9	57.9	-	-
01/01/16 15:00	-	59.1	-	59.1	59.1	-	-
01/01/16 16:00	-	58.9	-	58.9	58.9	-	-
01/01/16 17:00	3	59.6	53.6	58.4	59.6	-	-
01/01/16 18:00	5	61.4	58.6	58.3	61.4	-	-
01/01/16 19:00	4	64.4	57.6	63.4	-	64.4	-
01/01/16 20:00	1	65.6	61.6	63.3	-	65.6	-
01/01/16 21:00	5	65.2	59.2	64.1	-	65.2	-
01/01/16 22:00	4	66.5	63.7	63.3	-	66.5	-
01/01/16 23:00	1	67.4	55.4	67.2	-	-	67.4
	<b>36</b>	<b>72.6</b>	<b>59.6</b>	<b>74.2</b>	<b>58.9</b>	<b>65.5</b>	<b>77.1</b>

Location: Gare centrale NMT # 5



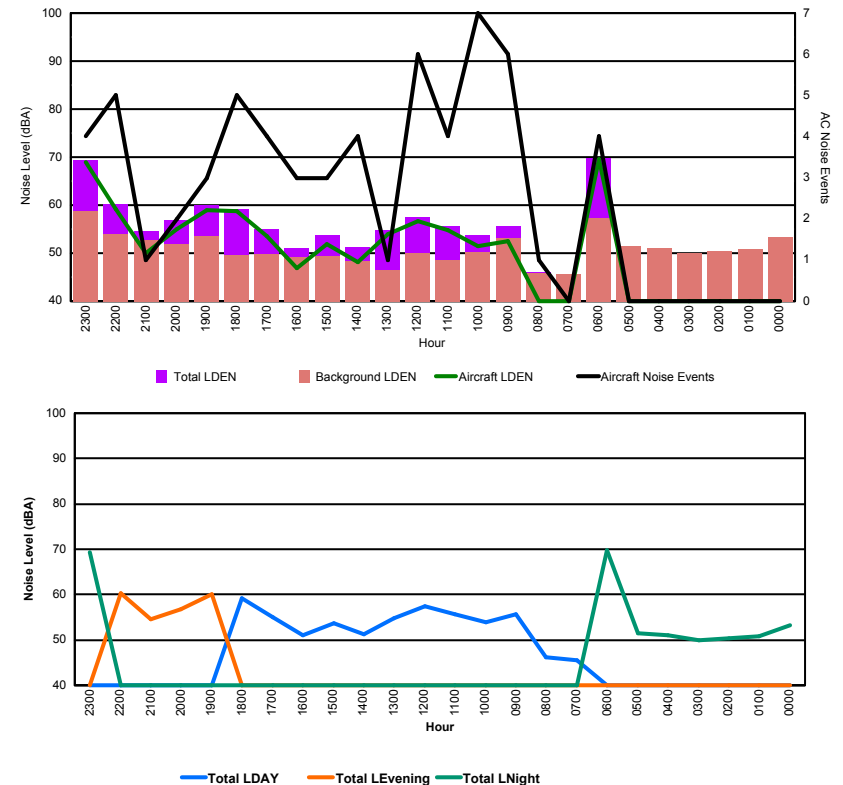


## Luxembourg Airport Noise Distribution by Hour

Between 02/01/2016 00:00:00 and 02/01/2016 23:59:59 (Local Time)

Day	Aircraft Events	Total LDEN dB (A)	Aircraft LDEN dB(A)	Background LDEN dB(A)	Total LDay dB(A)	Total LEvening dB(A)	Total LNight dB (A)
02/01/16 0:00	-	53.3	-	53.3	-	-	53.3
02/01/16 1:00	-	50.8	-	50.8	-	-	50.8
02/01/16 2:00	-	50.4	-	50.4	-	-	50.4
02/01/16 3:00	-	49.9	-	49.9	-	-	49.9
02/01/16 4:00	-	51.0	-	51.0	-	-	51.0
02/01/16 5:00	-	51.4	-	51.4	-	-	51.4
02/01/16 6:00	4	69.8	69.5	57.3	-	-	69.8
02/01/16 7:00	-	45.6	-	45.6	45.6	-	-
02/01/16 8:00	1	46.1	35.1	45.8	46.1	-	-
02/01/16 9:00	6	55.7	52.5	53.1	55.7	-	-
02/01/16 10:00	7	53.8	51.5	50.2	53.8	-	-
02/01/16 11:00	4	55.7	54.7	48.5	55.7	-	-
02/01/16 12:00	6	57.5	56.7	49.9	57.5	-	-
02/01/16 13:00	1	54.8	54.0	46.5	54.8	-	-
02/01/16 14:00	4	51.2	48.1	48.4	51.2	-	-
02/01/16 15:00	3	53.7	51.9	49.3	53.7	-	-
02/01/16 16:00	3	51.1	46.8	49.2	51.1	-	-
02/01/16 17:00	4	54.9	53.5	49.7	54.9	-	-
02/01/16 18:00	5	59.2	58.7	49.6	59.2	-	-
02/01/16 19:00	3	60.0	59.0	53.5	-	60.0	-
02/01/16 20:00	2	56.8	55.0	51.9	-	56.8	-
02/01/16 21:00	1	54.5	49.9	52.7	-	54.5	-
02/01/16 22:00	5	60.2	59.1	54.0	-	60.2	-
02/01/16 23:00	4	69.3	69.0	58.7	-	-	69.3
	<b>63</b>	<b>60.2</b>	<b>61.0</b>	<b>52.1</b>	<b>54.7</b>	<b>58.5</b>	<b>63.7</b>

Location: Roodt/Syr NMT # 1





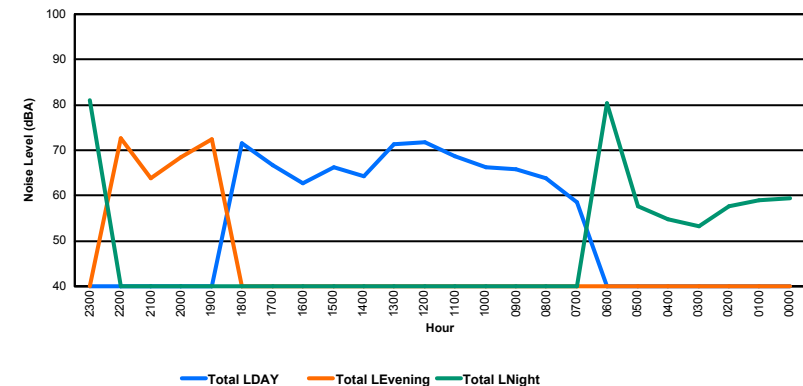
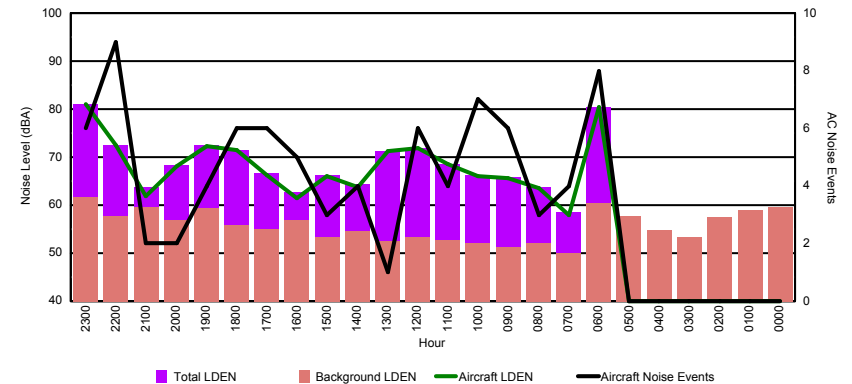


## Luxembourg Airport Noise Distribution by Hour

Between 02/01/2016 00:00:00 and 02/01/2016 23:59:59 (Local Time)

Day	Aircraft Events	Total LDEN dB (A)	Aircraft LDEN dB(A)	Background LDEN dB(A)	Total LDay dB(A)	Total LEvening dB(A)	Total LNight dB (A)
02/01/16 0:00	-	59.5	-	59.6	-	-	59.5
02/01/16 1:00	-	58.9	-	59.0	-	-	58.9
02/01/16 2:00	-	57.6	-	57.6	-	-	57.6
02/01/16 3:00	-	53.3	-	53.3	-	-	53.3
02/01/16 4:00	-	54.7	-	54.7	-	-	54.7
02/01/16 5:00	-	57.7	-	57.7	-	-	57.7
02/01/16 6:00	8	80.4	80.4	60.4	-	-	80.4
02/01/16 7:00	4	58.6	58.0	50.0	58.6	-	-
02/01/16 8:00	3	63.8	63.5	52.0	63.8	-	-
02/01/16 9:00	6	65.9	65.7	51.3	65.9	-	-
02/01/16 10:00	7	66.2	66.0	52.1	66.2	-	-
02/01/16 11:00	4	68.6	68.5	52.8	68.6	-	-
02/01/16 12:00	6	71.8	71.8	53.3	71.8	-	-
02/01/16 13:00	1	71.3	71.2	52.6	71.3	-	-
02/01/16 14:00	4	64.3	63.7	54.5	64.3	-	-
02/01/16 15:00	3	66.3	66.1	53.3	66.3	-	-
02/01/16 16:00	5	62.7	61.5	56.8	62.7	-	-
02/01/16 17:00	6	66.6	66.3	55.1	66.6	-	-
02/01/16 18:00	6	71.5	71.4	55.8	71.5	-	-
02/01/16 19:00	4	72.4	72.2	59.3	-	72.4	-
02/01/16 20:00	2	68.4	68.1	56.8	-	68.4	-
02/01/16 21:00	2	63.8	61.9	59.5	-	63.8	-
02/01/16 22:00	9	72.6	72.5	57.7	-	72.6	-
02/01/16 23:00	6	81.1	81.0	61.6	-	-	81.1
	<b>86</b>	<b>71.8</b>	<b>72.9</b>	<b>56.8</b>	<b>67.9</b>	<b>70.5</b>	<b>74.8</b>

Location: DVOR NMT # 2



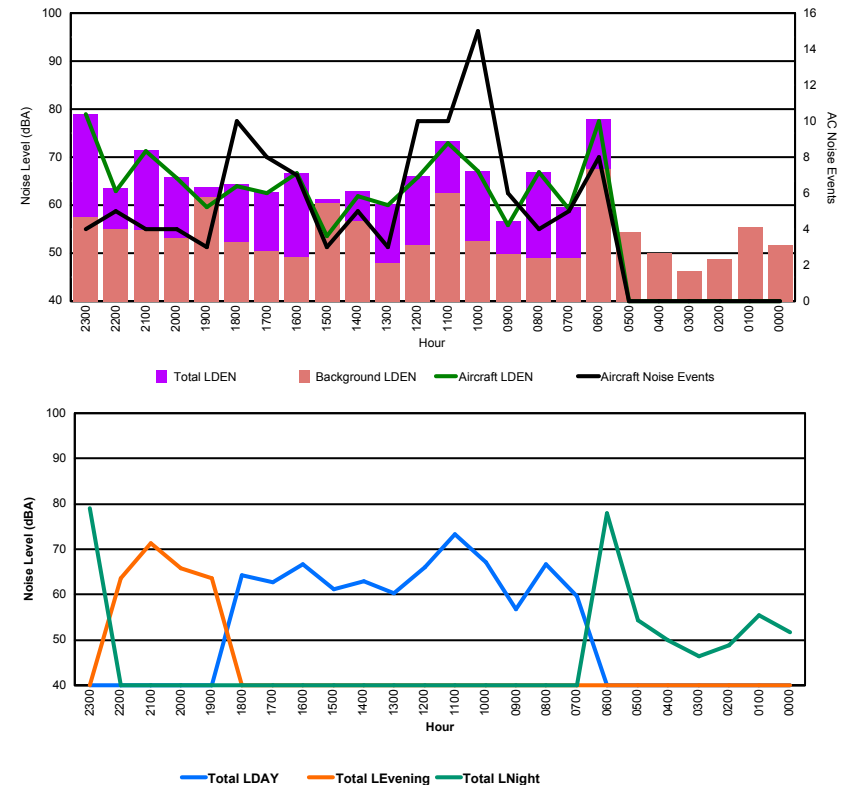


## Luxembourg Airport Noise Distribution by Hour

Between 02/01/2016 00:00:00 and 02/01/2016 23:59:59 (Local Time)

Day	Aircraft Events	Total LDEN dB (A)	Aircraft LDEN dB(A)	Background LDEN dB(A)	Total LDay dB(A)	Total LEvening dB(A)	Total LNight dB (A)
02/01/16 0:00	-	51.7	-	51.7	-	-	51.7
02/01/16 1:00	-	55.4	-	55.5	-	-	55.4
02/01/16 2:00	-	48.8	-	48.8	-	-	48.8
02/01/16 3:00	-	46.3	-	46.3	-	-	46.3
02/01/16 4:00	-	49.9	-	49.9	-	-	49.9
02/01/16 5:00	-	54.4	-	54.4	-	-	54.4
02/01/16 6:00	8	77.9	77.5	67.5	-	-	77.9
02/01/16 7:00	5	59.6	59.2	49.0	59.6	-	-
02/01/16 8:00	4	66.8	66.8	48.9	66.8	-	-
02/01/16 9:00	6	56.7	55.8	49.8	56.7	-	-
02/01/16 10:00	15	67.1	67.0	52.4	67.1	-	-
02/01/16 11:00	10	73.4	73.0	62.5	73.4	-	-
02/01/16 12:00	10	66.0	65.8	51.6	66.0	-	-
02/01/16 13:00	3	60.3	60.0	47.9	60.3	-	-
02/01/16 14:00	5	63.0	61.8	56.7	63.0	-	-
02/01/16 15:00	3	61.2	53.5	60.5	61.2	-	-
02/01/16 16:00	7	66.6	66.6	49.1	66.6	-	-
02/01/16 17:00	8	62.7	62.5	50.4	62.7	-	-
02/01/16 18:00	10	64.3	64.0	52.3	64.3	-	-
02/01/16 19:00	3	63.7	59.6	61.7	-	63.7	-
02/01/16 20:00	4	65.9	65.7	53.2	-	65.9	-
02/01/16 21:00	4	71.4	71.3	54.8	-	71.4	-
02/01/16 22:00	5	63.5	62.9	55.1	-	63.5	-
02/01/16 23:00	4	79.0	79.0	57.6	-	-	79.0
	<b>114</b>	<b>69.5</b>	<b>70.5</b>	<b>57.6</b>	<b>66.3</b>	<b>67.5</b>	<b>72.5</b>

Location: Mid Runway NMT # 3



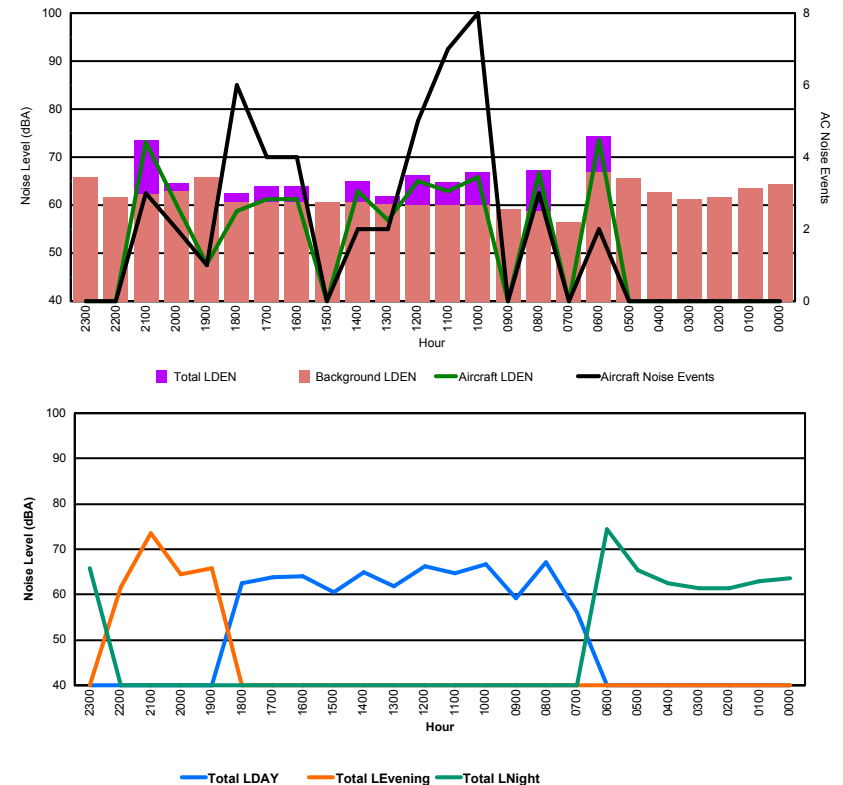


## Luxembourg Airport Noise Distribution by Hour

Between 02/01/2016 00:00:00 and 02/01/2016 23:59:59 (Local Time)

Day	Aircraft Events	Total LDEN dB (A)	Aircraft LDEN dB(A)	Background LDEN dB(A)	Total LDay dB(A)	Total LEvening dB(A)	Total LNight dB (A)
02/01/16 0:00	-	63.6	-	64.4	-	-	63.6
02/01/16 1:00	-	63.0	-	63.6	-	-	63.0
02/01/16 2:00	-	61.4	-	61.7	-	-	61.4
02/01/16 3:00	-	61.3	-	61.3	-	-	61.3
02/01/16 4:00	-	62.6	-	62.7	-	-	62.6
02/01/16 5:00	-	65.4	-	65.6	-	-	65.4
02/01/16 6:00	2	74.4	73.6	66.8	-	-	74.4
02/01/16 7:00	-	56.1	-	56.4	56.1	-	-
02/01/16 8:00	3	67.2	66.7	58.8	67.2	-	-
02/01/16 9:00	-	59.2	-	59.2	59.2	-	-
02/01/16 10:00	8	66.8	65.9	60.1	66.8	-	-
02/01/16 11:00	7	64.7	63.0	60.1	64.7	-	-
02/01/16 12:00	5	66.2	65.0	60.0	66.2	-	-
02/01/16 13:00	2	61.8	56.8	60.3	61.8	-	-
02/01/16 14:00	2	64.9	62.9	60.6	64.9	-	-
02/01/16 15:00	-	60.6	-	60.6	60.6	-	-
02/01/16 16:00	4	64.0	61.3	60.7	64.0	-	-
02/01/16 17:00	4	63.9	61.3	60.6	63.9	-	-
02/01/16 18:00	6	62.6	58.7	60.6	62.6	-	-
02/01/16 19:00	1	65.9	47.7	65.9	-	65.9	-
02/01/16 20:00	2	64.6	59.9	62.9	-	64.6	-
02/01/16 21:00	3	73.5	73.2	62.2	-	73.5	-
02/01/16 22:00	-	61.7	-	61.7	-	61.7	-
02/01/16 23:00	-	65.8	-	65.8	-	-	65.8
	<b>49</b>	<b>66.4</b>	<b>67.0</b>	<b>62.5</b>	<b>64.1</b>	<b>68.8</b>	<b>67.4</b>

Location: NDB-Hamm NMT # 4



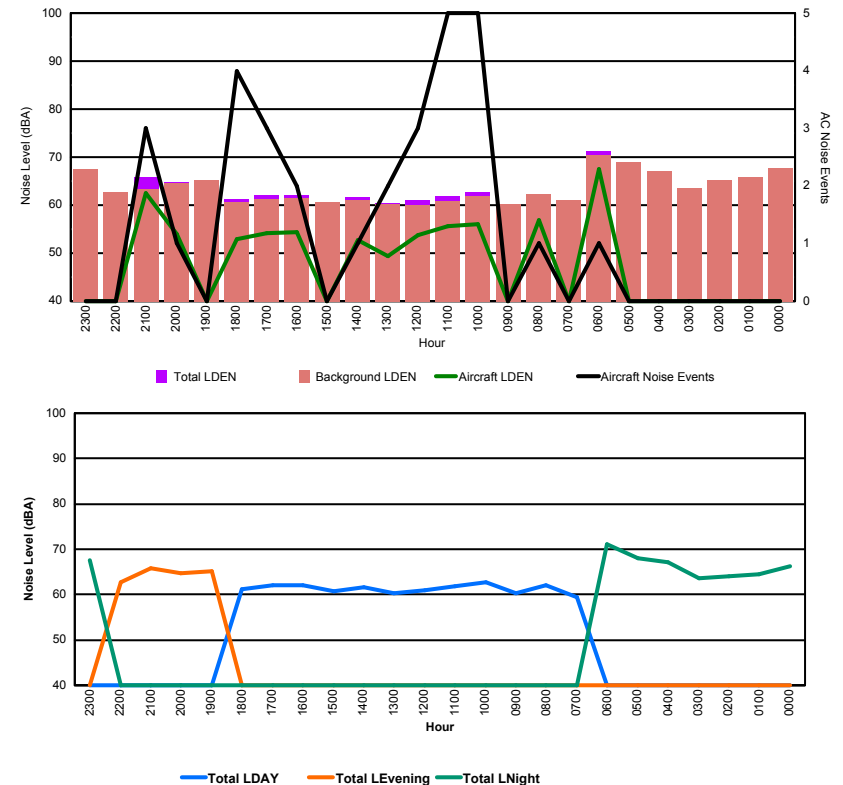


## Luxembourg Airport Noise Distribution by Hour

Between 02/01/2016 00:00:00 and 02/01/2016 23:59:59 (Local Time)

Day	Aircraft Events	Total LDEN dB (A)	Aircraft LDEN dB(A)	Background LDEN dB(A)	Total LDay dB(A)	Total LEvening dB(A)	Total LNight dB (A)
02/01/16 0:00	-	66.2	-	67.7	-	-	66.2
02/01/16 1:00	-	64.5	-	65.9	-	-	64.5
02/01/16 2:00	-	64.1	-	65.2	-	-	64.1
02/01/16 3:00	-	63.5	-	63.5	-	-	63.5
02/01/16 4:00	-	67.1	-	67.1	-	-	67.1
02/01/16 5:00	-	68.0	-	69.0	-	-	68.0
02/01/16 6:00	1	71.2	67.4	70.4	-	-	71.2
02/01/16 7:00	-	59.5	-	61.0	59.5	-	-
02/01/16 8:00	1	62.1	56.8	62.2	62.1	-	-
02/01/16 9:00	-	60.2	-	60.3	60.2	-	-
02/01/16 10:00	5	62.7	56.1	61.8	62.7	-	-
02/01/16 11:00	5	61.8	55.6	60.8	61.8	-	-
02/01/16 12:00	3	61.0	53.8	60.1	61.0	-	-
02/01/16 13:00	2	60.4	49.3	60.2	60.4	-	-
02/01/16 14:00	1	61.6	52.7	61.0	61.6	-	-
02/01/16 15:00	-	60.7	-	60.7	60.7	-	-
02/01/16 16:00	2	62.0	54.4	61.4	62.0	-	-
02/01/16 17:00	3	62.0	54.1	61.3	62.0	-	-
02/01/16 18:00	4	61.2	53.0	60.7	61.2	-	-
02/01/16 19:00	-	65.1	-	65.2	-	65.1	-
02/01/16 20:00	1	64.8	54.0	64.5	-	64.8	-
02/01/16 21:00	3	65.9	62.6	63.3	-	65.9	-
02/01/16 22:00	-	62.8	-	62.8	-	62.8	-
02/01/16 23:00	-	67.5	-	67.5	-	-	67.5
	<b>31</b>	<b>64.7</b>	<b>59.2</b>	<b>64.7</b>	<b>61.4</b>	<b>64.8</b>	<b>67.2</b>

Location: Gare centrale NMT # 5



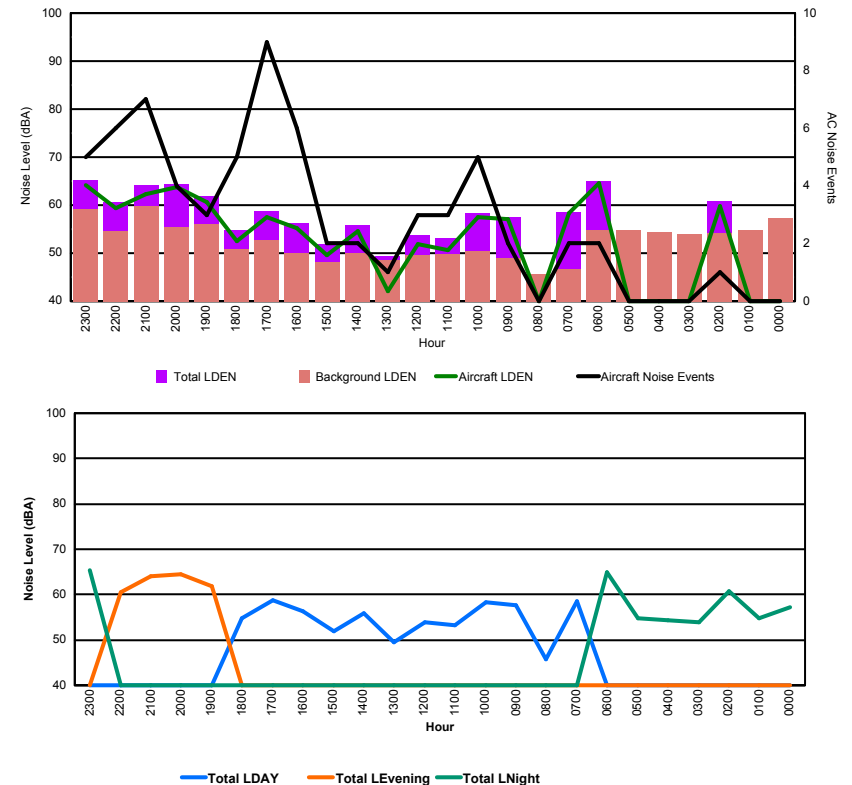


## Luxembourg Airport Noise Distribution by Hour

Between 03/01/2016 00:00:00 and 03/01/2016 23:59:59 (Local Time)

Day	Aircraft Events	Total LDEN dB (A)	Aircraft LDEN dB(A)	Background LDEN dB(A)	Total LDay dB(A)	Total LEvening dB(A)	Total LNight dB (A)
03/01/16 0:00	-	57.2	-	57.2	-	-	57.2
03/01/16 1:00	-	54.8	-	54.8	-	-	54.8
03/01/16 2:00	1	60.8	59.7	54.2	-	-	60.8
03/01/16 3:00	-	53.9	-	53.9	-	-	53.9
03/01/16 4:00	-	54.3	-	54.3	-	-	54.3
03/01/16 5:00	-	54.7	-	54.7	-	-	54.7
03/01/16 6:00	2	65.0	64.5	54.7	-	-	65.0
03/01/16 7:00	2	58.5	58.3	46.6	58.5	-	-
03/01/16 8:00	-	45.7	-	45.7	45.7	-	-
03/01/16 9:00	2	57.6	57.1	48.9	57.6	-	-
03/01/16 10:00	5	58.3	57.6	50.4	58.3	-	-
03/01/16 11:00	3	53.2	50.6	49.7	53.2	-	-
03/01/16 12:00	3	53.8	51.9	49.6	53.8	-	-
03/01/16 13:00	1	49.4	42.0	48.6	49.4	-	-
03/01/16 14:00	2	55.8	54.5	50.0	55.8	-	-
03/01/16 15:00	2	51.9	49.6	48.2	51.9	-	-
03/01/16 16:00	6	56.3	55.2	50.1	56.3	-	-
03/01/16 17:00	9	58.8	57.6	52.8	58.8	-	-
03/01/16 18:00	5	54.7	52.5	50.9	54.7	-	-
03/01/16 19:00	3	61.9	60.7	56.1	-	61.9	-
03/01/16 20:00	4	64.4	63.8	55.4	-	64.4	-
03/01/16 21:00	7	64.1	62.3	59.7	-	64.1	-
03/01/16 22:00	6	60.6	59.4	54.6	-	60.6	-
03/01/16 23:00	5	65.3	64.2	59.1	-	-	65.3
	<b>68</b>	<b>59.6</b>	<b>59.5</b>	<b>54.0</b>	<b>55.8</b>	<b>63.0</b>	<b>60.7</b>

Location: Roodt/Syr NMT # 1



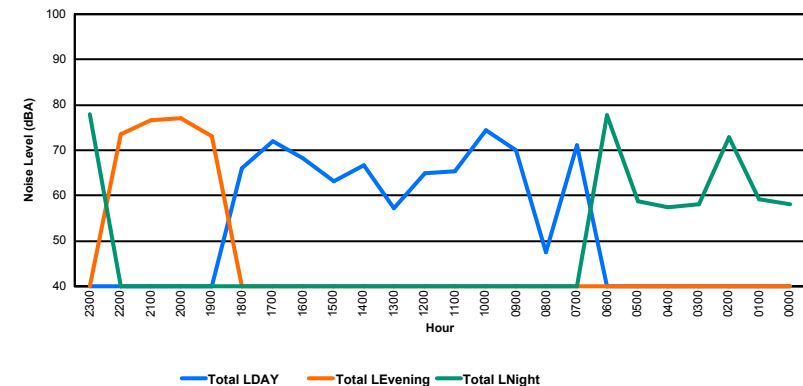
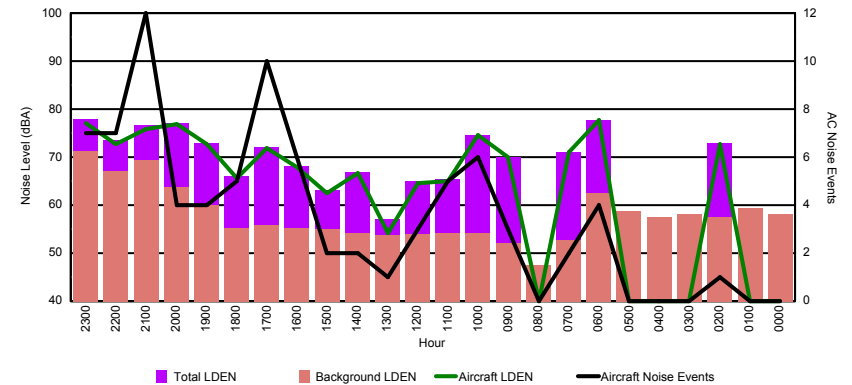


## Luxembourg Airport Noise Distribution by Hour

Between 03/01/2016 00:00:00 and 03/01/2016 23:59:59 (Local Time)

Day	Aircraft Events	Total LDEN dB (A)	Aircraft LDEN dB(A)	Background LDEN dB(A)	Total LDay dB(A)	Total LEvening dB(A)	Total LNight dB (A)
03/01/16 0:00	-	58.1	-	58.1	-	-	58.1
03/01/16 1:00	-	59.2	-	59.4	-	-	59.2
03/01/16 2:00	1	72.9	72.7	57.4	-	-	72.9
03/01/16 3:00	-	58.2	-	58.2	-	-	58.2
03/01/16 4:00	-	57.4	-	57.4	-	-	57.4
03/01/16 5:00	-	58.7	-	58.7	-	-	58.7
03/01/16 6:00	4	77.8	77.7	62.5	-	-	77.8
03/01/16 7:00	2	71.1	71.0	52.8	71.1	-	-
03/01/16 8:00	-	47.6	-	47.6	47.6	-	-
03/01/16 9:00	3	70.0	70.0	52.0	70.0	-	-
03/01/16 10:00	6	74.5	74.5	54.2	74.5	-	-
03/01/16 11:00	5	65.4	65.1	54.2	65.4	-	-
03/01/16 12:00	3	65.0	64.6	54.0	65.0	-	-
03/01/16 13:00	1	57.1	54.2	53.8	57.1	-	-
03/01/16 14:00	2	66.8	66.6	54.2	66.8	-	-
03/01/16 15:00	2	63.2	62.4	55.1	63.2	-	-
03/01/16 16:00	6	68.2	68.0	55.3	68.2	-	-
03/01/16 17:00	10	72.0	71.9	55.9	72.0	-	-
03/01/16 18:00	5	66.0	65.6	55.3	66.0	-	-
03/01/16 19:00	4	73.0	72.8	60.1	-	73.0	-
03/01/16 20:00	4	77.0	76.8	63.8	-	77.0	-
03/01/16 21:00	12	76.6	75.8	69.3	-	76.6	-
03/01/16 22:00	7	73.6	72.7	67.1	-	73.6	-
03/01/16 23:00	7	78.0	77.1	71.2	-	-	78.0
	<b>84</b>	<b>72.0</b>	<b>72.8</b>	<b>62.1</b>	<b>68.8</b>	<b>75.4</b>	<b>72.6</b>

Location: DVOR NMT # 2



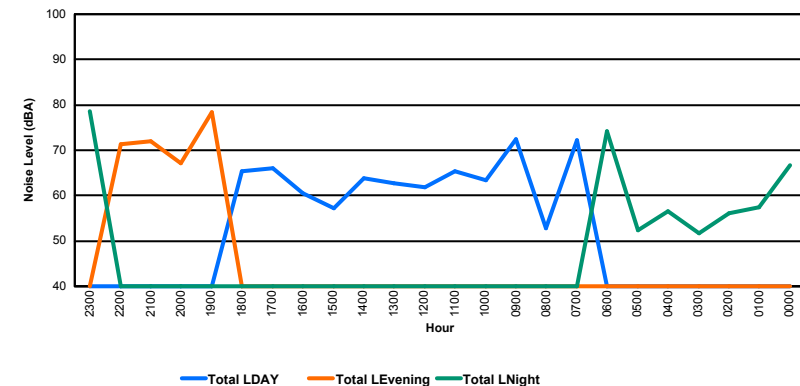
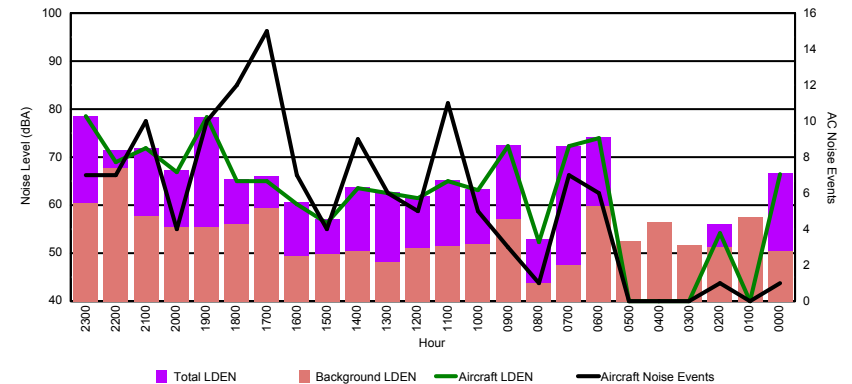


## Luxembourg Airport Noise Distribution by Hour

Between 03/01/2016 00:00:00 and 03/01/2016 23:59:59 (Local Time)

Day	Aircraft Events	Total LDEN dB (A)	Aircraft LDEN dB(A)	Background LDEN dB(A)	Total LDay dB(A)	Total LEvening dB(A)	Total LNight dB (A)
03/01/16 0:00	1	66.6	66.4	50.5	-	-	66.6
03/01/16 1:00	-	57.4	-	57.4	-	-	57.4
03/01/16 2:00	1	56.0	54.2	51.3	-	-	56.0
03/01/16 3:00	-	51.6	-	51.7	-	-	51.6
03/01/16 4:00	-	56.5	-	56.5	-	-	56.5
03/01/16 5:00	-	52.4	-	52.4	-	-	52.4
03/01/16 6:00	6	74.1	73.9	59.8	-	-	74.1
03/01/16 7:00	7	72.2	72.2	47.5	72.2	-	-
03/01/16 8:00	1	52.9	52.3	43.7	52.9	-	-
03/01/16 9:00	3	72.4	72.3	57.1	72.4	-	-
03/01/16 10:00	5	63.4	63.1	51.9	63.4	-	-
03/01/16 11:00	11	65.3	65.1	51.5	65.3	-	-
03/01/16 12:00	5	61.8	61.4	51.0	61.8	-	-
03/01/16 13:00	6	62.7	62.5	48.2	62.7	-	-
03/01/16 14:00	9	63.8	63.6	50.5	63.8	-	-
03/01/16 15:00	4	57.1	56.3	49.7	57.1	-	-
03/01/16 16:00	7	60.6	60.3	49.3	60.6	-	-
03/01/16 17:00	15	66.1	65.1	59.3	66.1	-	-
03/01/16 18:00	12	65.4	64.9	56.1	65.4	-	-
03/01/16 19:00	10	78.3	78.3	55.5	-	78.3	-
03/01/16 20:00	4	67.2	66.9	55.5	-	67.2	-
03/01/16 21:00	10	71.9	71.8	57.7	-	71.9	-
03/01/16 22:00	7	71.4	68.9	67.8	-	71.4	-
03/01/16 23:00	7	78.6	78.6	60.5	-	-	78.6
	131	70.4	71.0	57.5	66.6	74.1	71.2

Location: Mid Runway NMT # 3



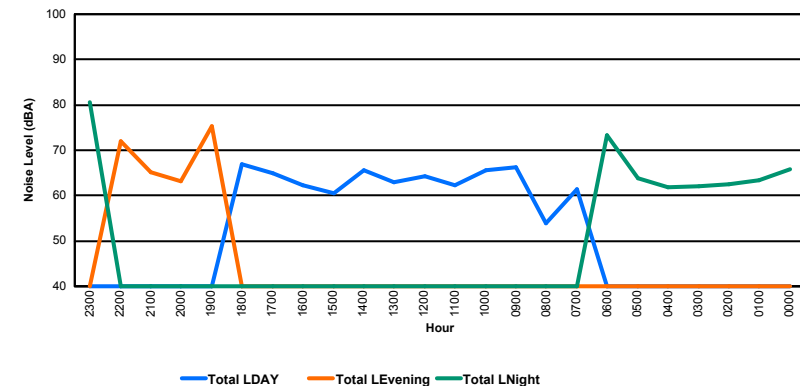
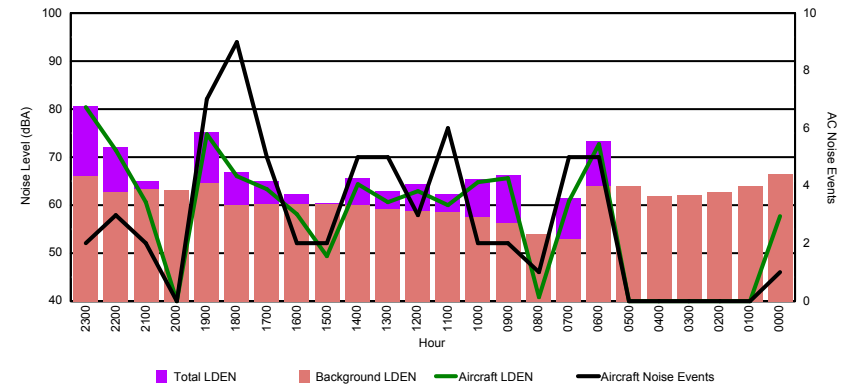


## Luxembourg Airport Noise Distribution by Hour

Between 03/01/2016 00:00:00 and 03/01/2016 23:59:59 (Local Time)

Day	Aircraft Events	Total LDEN dB (A)	Aircraft LDEN dB(A)	Background LDEN dB(A)	Total LDay dB(A)	Total LEvening dB(A)	Total LNight dB (A)
03/01/16 0:00	1	65.9	57.7	66.5	-	-	65.9
03/01/16 1:00	-	63.3	-	64.0	-	-	63.3
03/01/16 2:00	-	62.4	-	62.8	-	-	62.4
03/01/16 3:00	-	62.0	-	62.0	-	-	62.0
03/01/16 4:00	-	61.9	-	61.9	-	-	61.9
03/01/16 5:00	-	63.9	-	63.9	-	-	63.9
03/01/16 6:00	5	73.3	72.8	63.9	-	-	73.3
03/01/16 7:00	5	61.4	60.8	53.0	61.4	-	-
03/01/16 8:00	1	54.0	40.8	53.9	54.0	-	-
03/01/16 9:00	2	66.2	65.7	56.3	66.2	-	-
03/01/16 10:00	2	65.5	64.8	57.5	65.5	-	-
03/01/16 11:00	6	62.3	60.1	58.5	62.3	-	-
03/01/16 12:00	3	64.3	62.9	58.8	64.3	-	-
03/01/16 13:00	5	62.9	60.6	59.1	62.9	-	-
03/01/16 14:00	5	65.7	64.3	60.0	65.7	-	-
03/01/16 15:00	2	60.5	49.4	60.2	60.5	-	-
03/01/16 16:00	2	62.3	58.2	60.3	62.3	-	-
03/01/16 17:00	5	65.0	63.4	60.2	65.0	-	-
03/01/16 18:00	9	66.9	66.0	60.0	66.9	-	-
03/01/16 19:00	7	75.2	74.7	64.5	-	75.2	-
03/01/16 20:00	-	63.1	-	63.1	-	63.1	-
03/01/16 21:00	2	65.1	60.7	63.3	-	65.1	-
03/01/16 22:00	3	72.0	71.5	62.7	-	72.0	-
03/01/16 23:00	2	80.6	80.4	66.0	-	-	80.6
	<b>67</b>	<b>69.9</b>	<b>70.4</b>	<b>62.1</b>	<b>64.0</b>	<b>71.3</b>	<b>72.7</b>

Location: NDB-Hamm NMT # 4







## Luxembourg Airport Noise Distribution by Hour

Between 03/01/2016 00:00:00 and 03/01/2016 23:59:59 (Local Time)

Day	Aircraft Events	Total LDEN dB (A)	Aircraft LDEN dB(A)	Background LDEN dB(A)	Total LDay dB(A)	Total LEvening dB(A)	Total LNight dB (A)
03/01/16 0:00	-	69.3	-	70.3	-	-	69.3
03/01/16 1:00	-	69.4	-	70.2	-	-	69.4
03/01/16 2:00	-	66.5	-	68.0	-	-	66.5
03/01/16 3:00	-	65.3	-	65.4	-	-	65.3
03/01/16 4:00	-	64.2	-	64.2	-	-	64.2
03/01/16 5:00	-	65.5	-	65.6	-	-	65.5
03/01/16 6:00	5	68.8	65.6	66.6	-	-	68.8
03/01/16 7:00	5	59.3	55.4	57.9	59.3	-	-
03/01/16 8:00	2	58.8	40.9	59.3	58.8	-	-
03/01/16 9:00	1	60.1	55.6	58.3	60.1	-	-
03/01/16 10:00	2	63.4	56.9	62.3	63.4	-	-
03/01/16 11:00	5	62.2	58.5	59.9	62.2	-	-
03/01/16 12:00	1	59.7	53.7	58.5	59.7	-	-
03/01/16 13:00	3	60.3	54.0	59.3	60.3	-	-
03/01/16 14:00	1	60.3	54.3	59.1	60.3	-	-
03/01/16 15:00	-	59.9	-	59.9	59.9	-	-
03/01/16 16:00	1	60.5	52.6	59.8	60.5	-	-
03/01/16 17:00	3	60.9	55.7	59.5	60.9	-	-
03/01/16 18:00	3	61.1	55.9	59.7	61.1	-	-
03/01/16 19:00	7	68.4	65.5	65.5	-	68.4	-
03/01/16 20:00	-	66.0	-	66.1	-	66.0	-
03/01/16 21:00	2	67.2	56.8	67.2	-	67.2	-
03/01/16 22:00	3	67.1	62.5	65.7	-	67.1	-
03/01/16 23:00	2	72.4	70.0	69.0	-	-	72.4
	<b>46</b>	<b>65.8</b>	<b>61.6</b>	<b>65.1</b>	<b>60.7</b>	<b>67.3</b>	<b>68.5</b>

Location: Gare centrale NMT # 5

